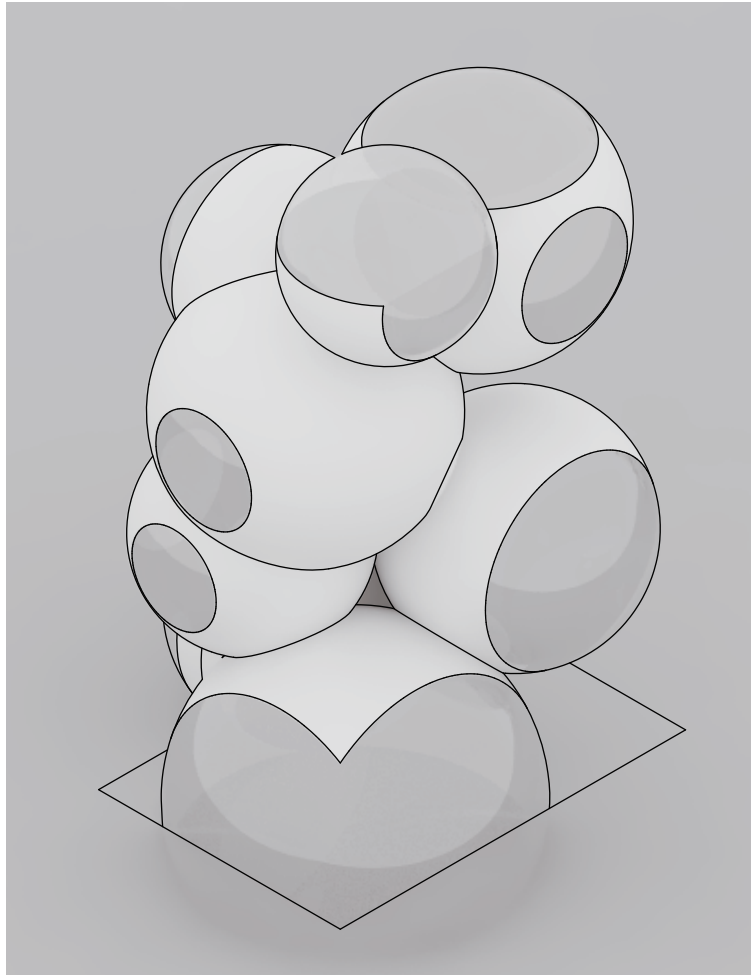
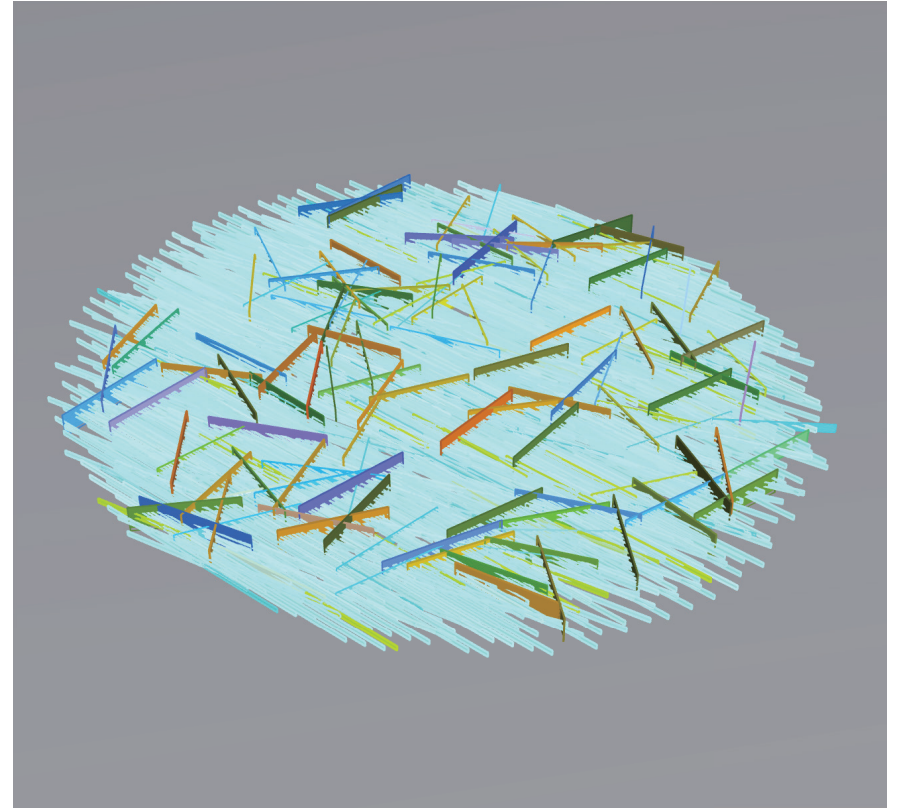
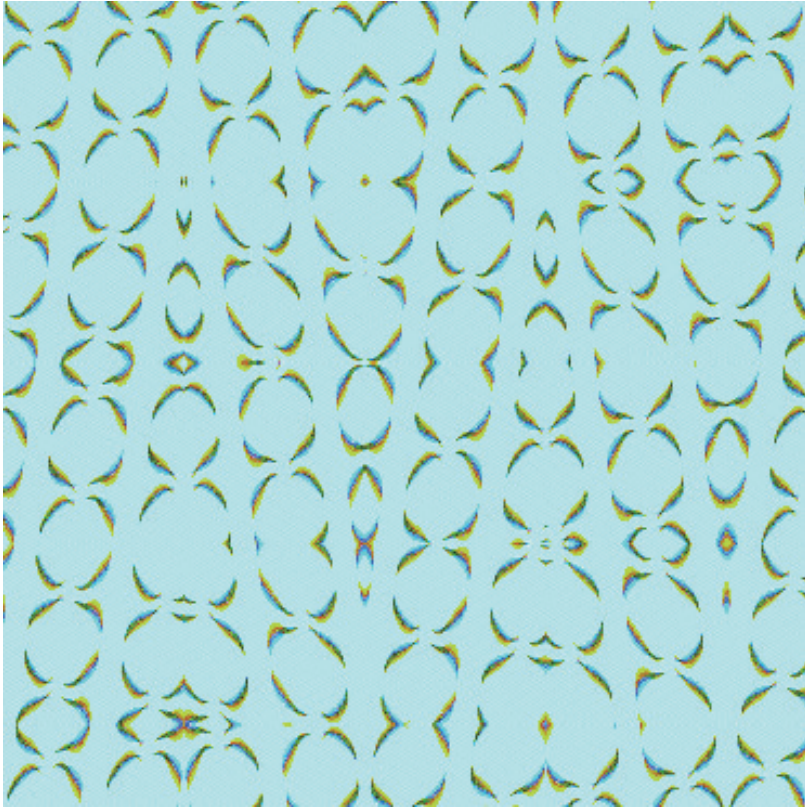


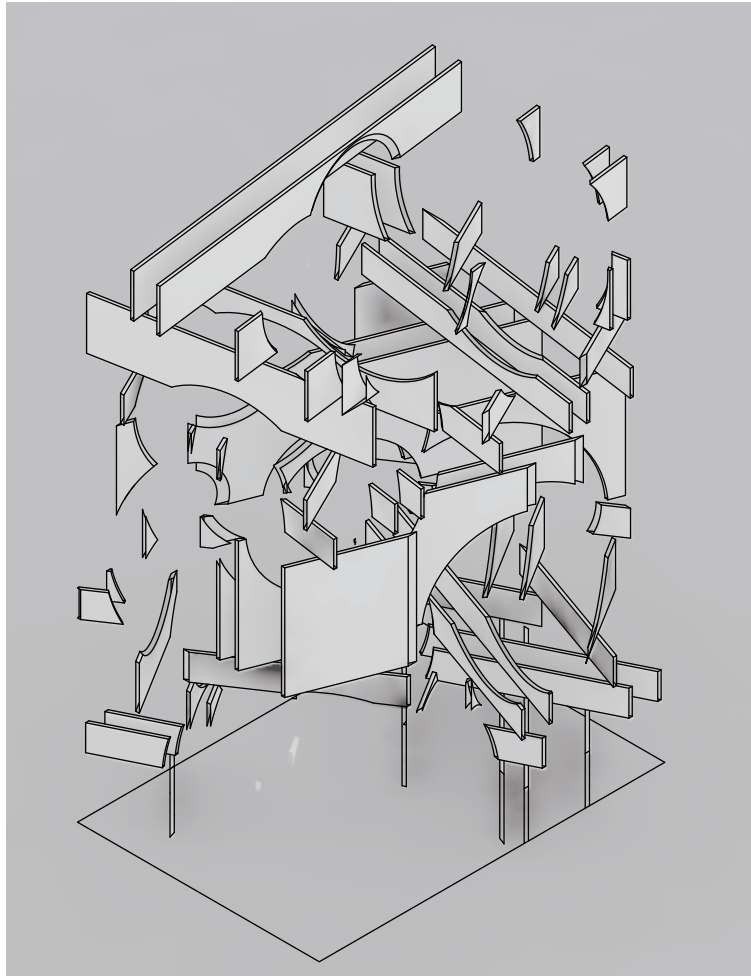
Jangle is chaos. The elements in jangle relate each other, spheres spread in all directions.



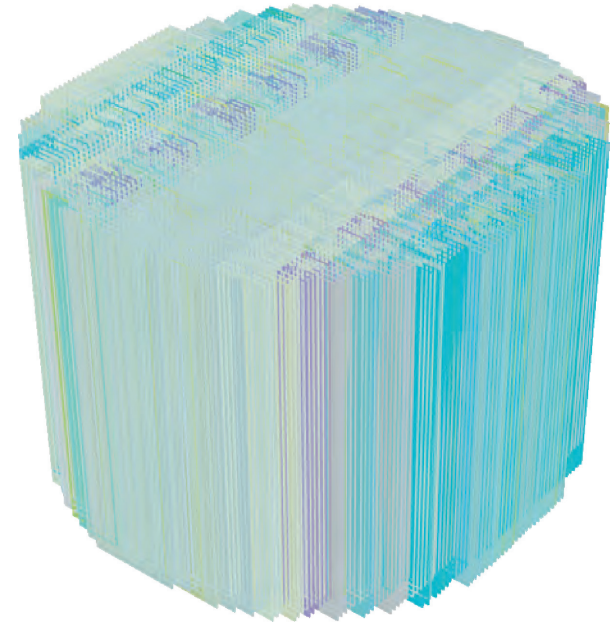
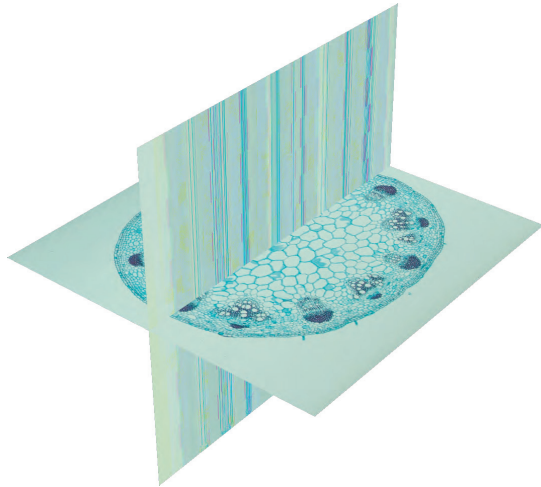
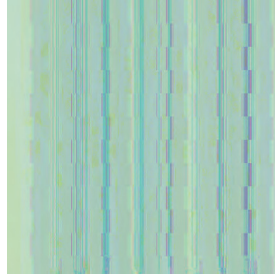
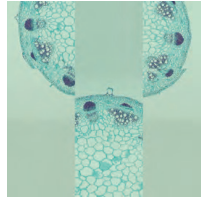
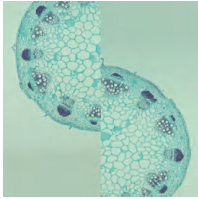
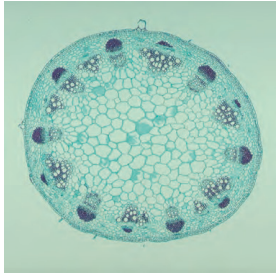
Part 1



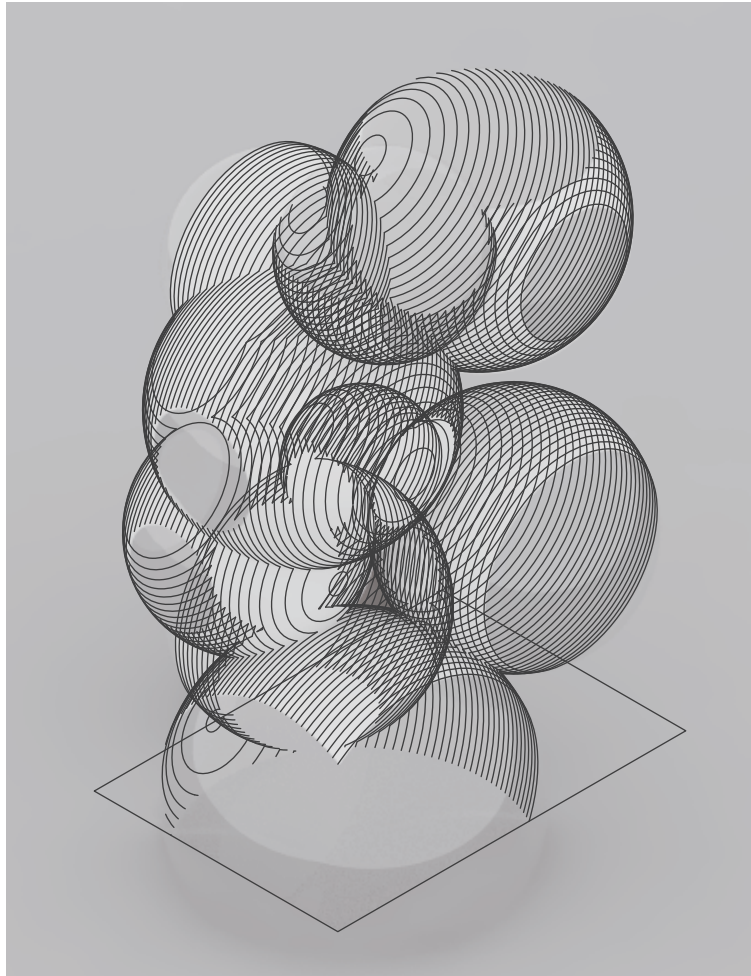
Closterium is an aquatic creature. Closteriums divide cells in the water, Glich made them wave like above image. There are colorful walls.



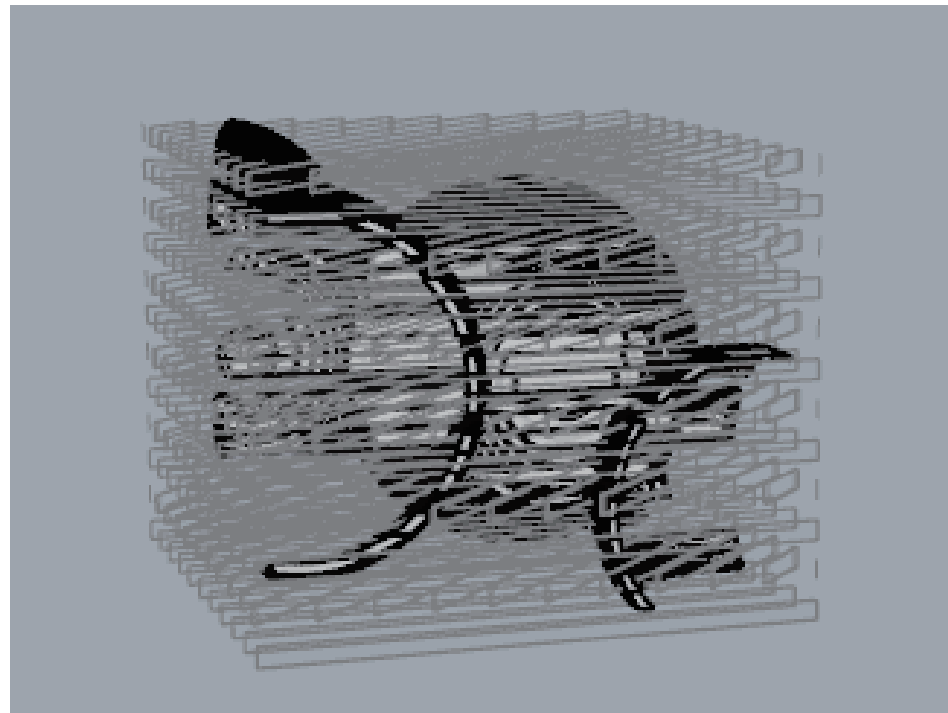
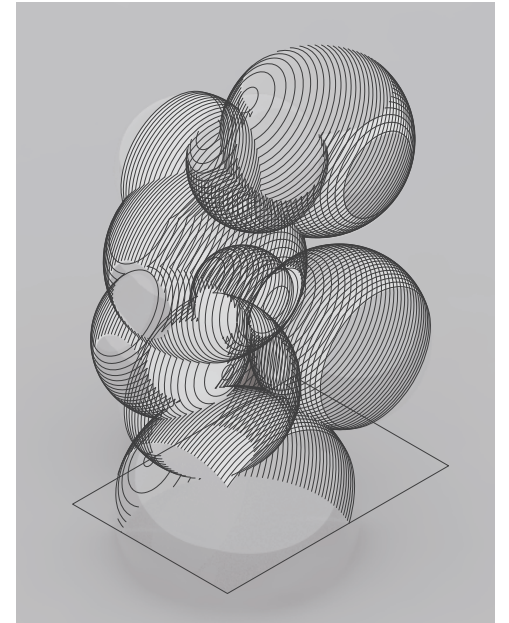
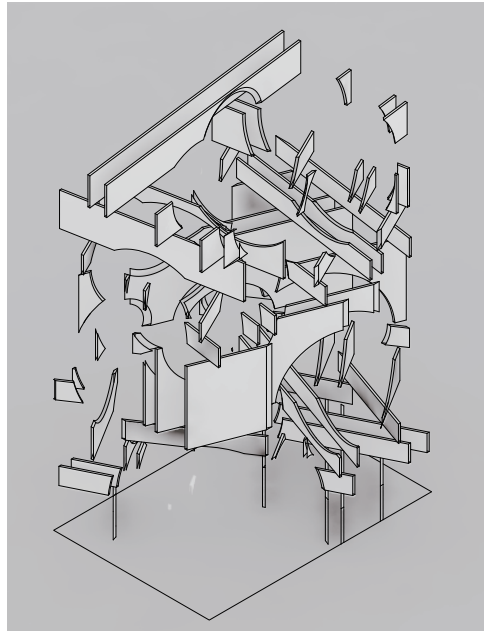
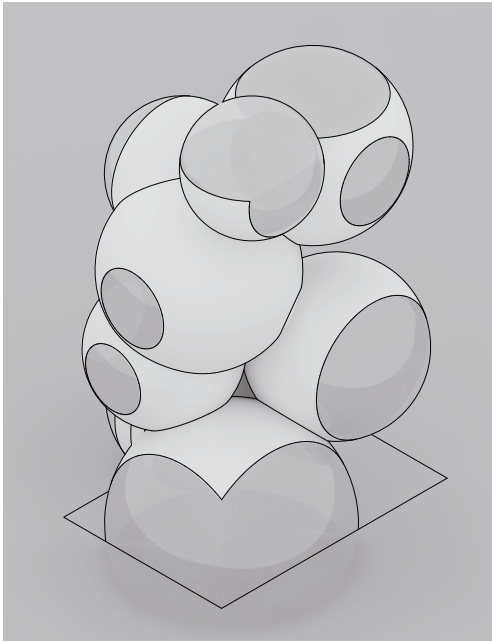
Part 2

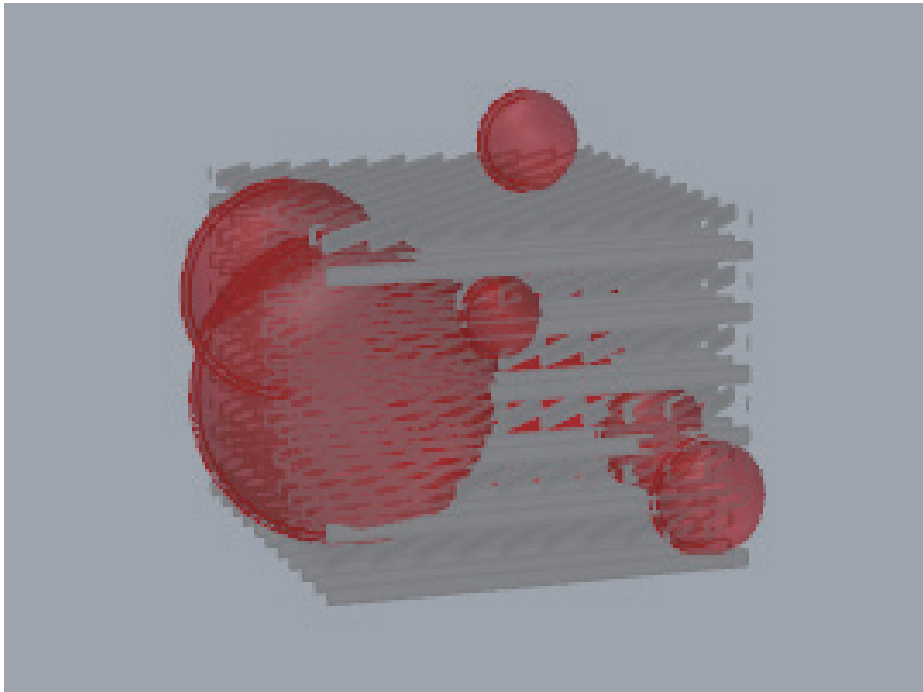
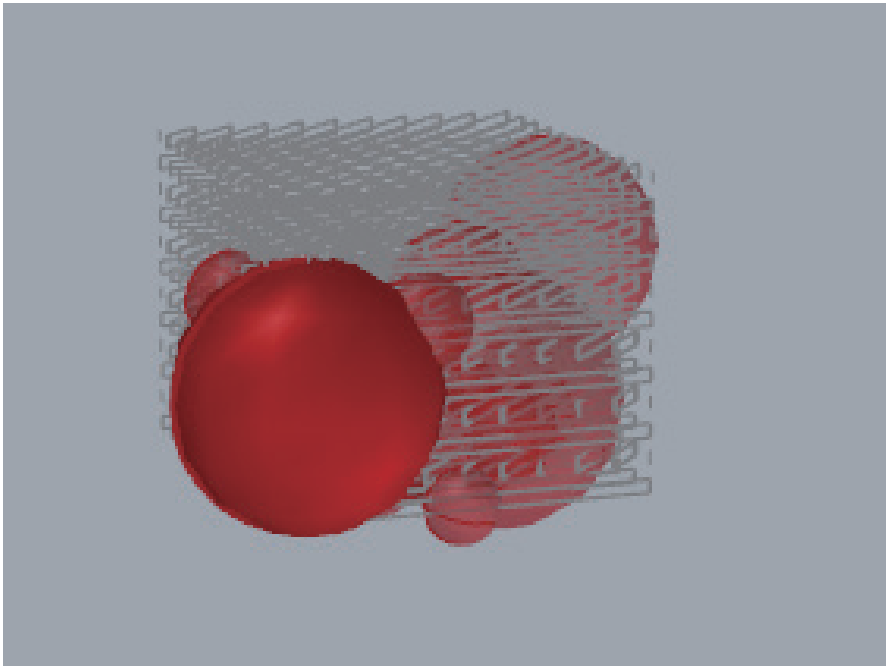
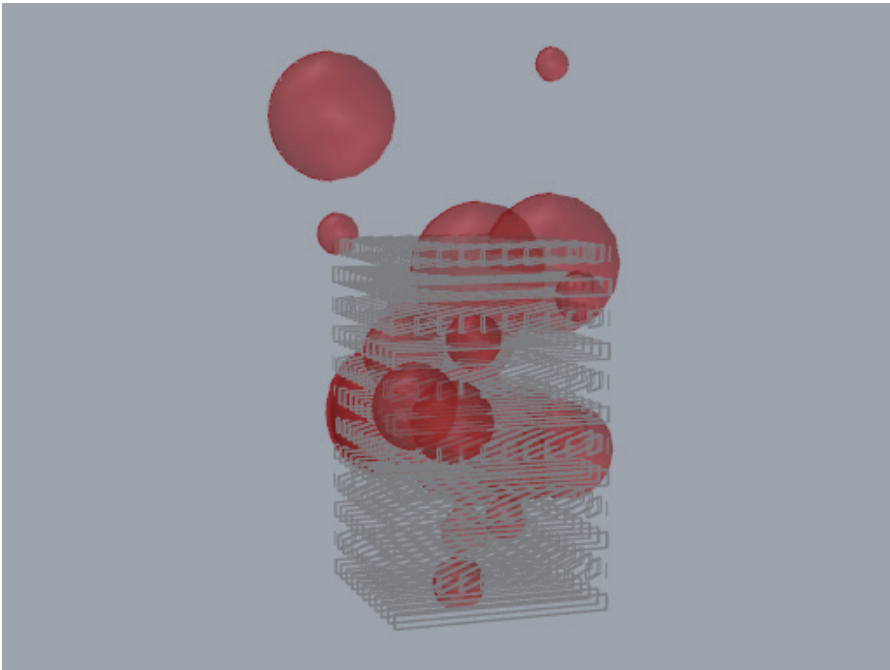


Glich changes Stem plan to stem elevation. I tried to reconstruct the stem with many surfaces, finally they made the stem outline.



Part 3







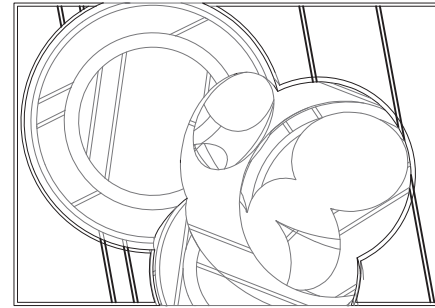
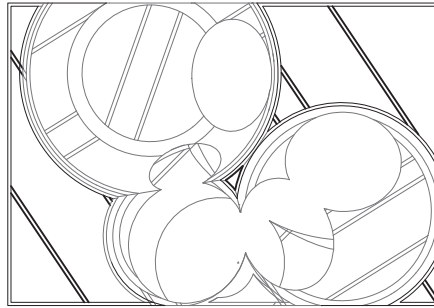
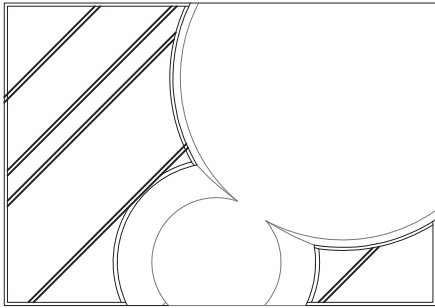
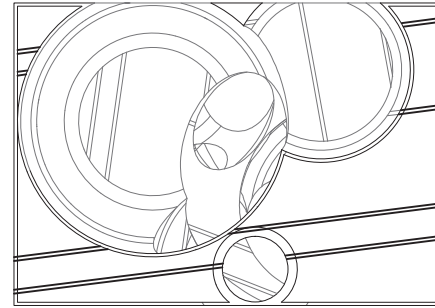
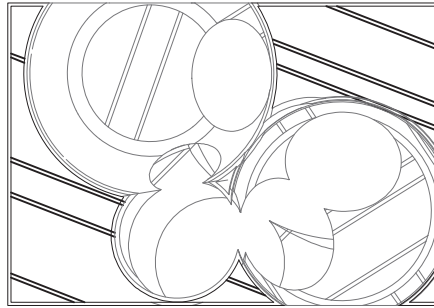
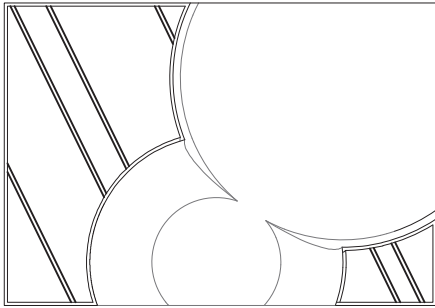
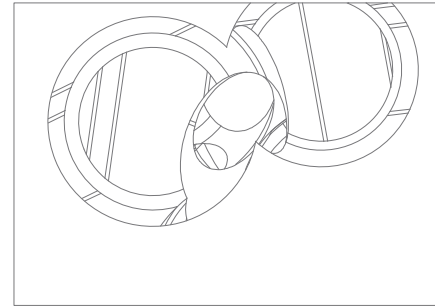
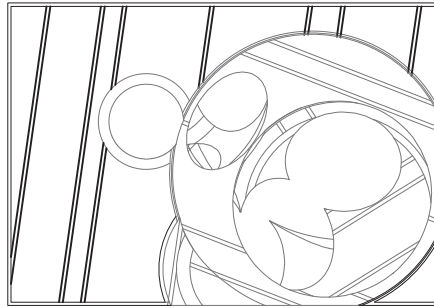
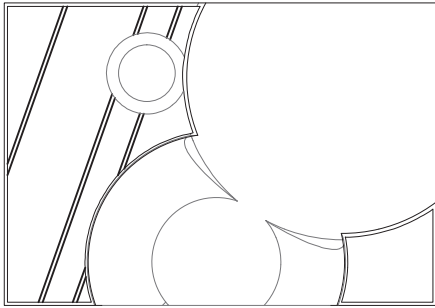
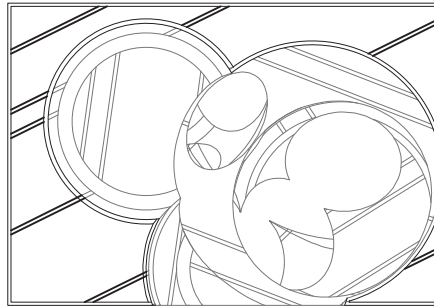
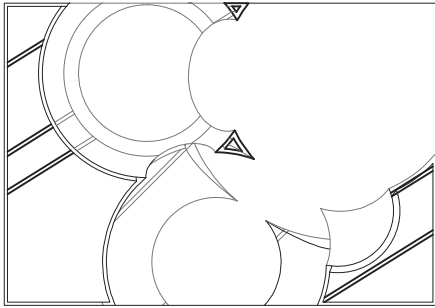
Site : Omote-sando (表参道)

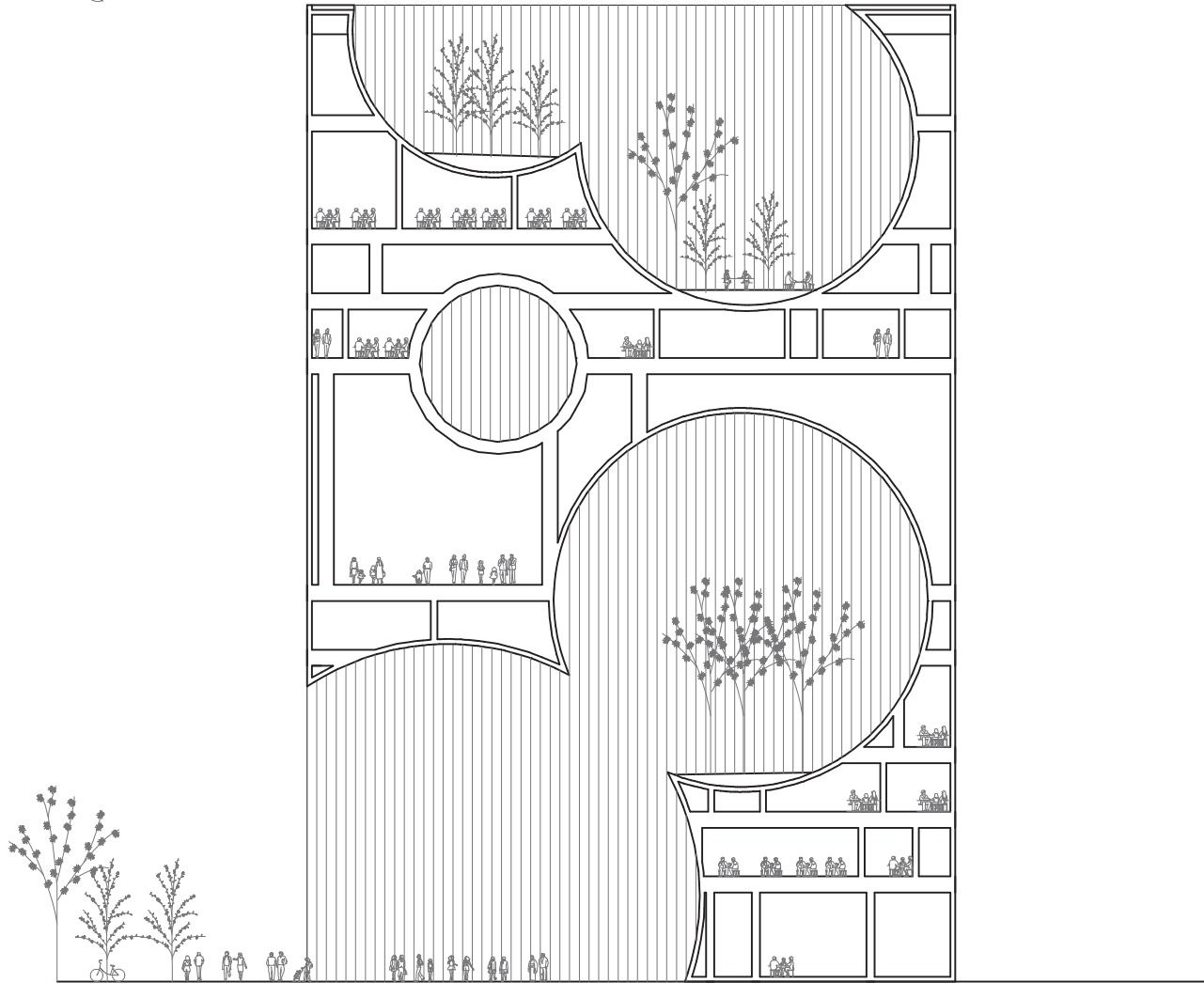


Site is a corner near the intersection in Omote-sando. In A street, there are many offices. On the other hand B street, famous brand shops lines up.



Group 1 : Yoshiki, Tskuro, Takuya





Merci and Thank you.