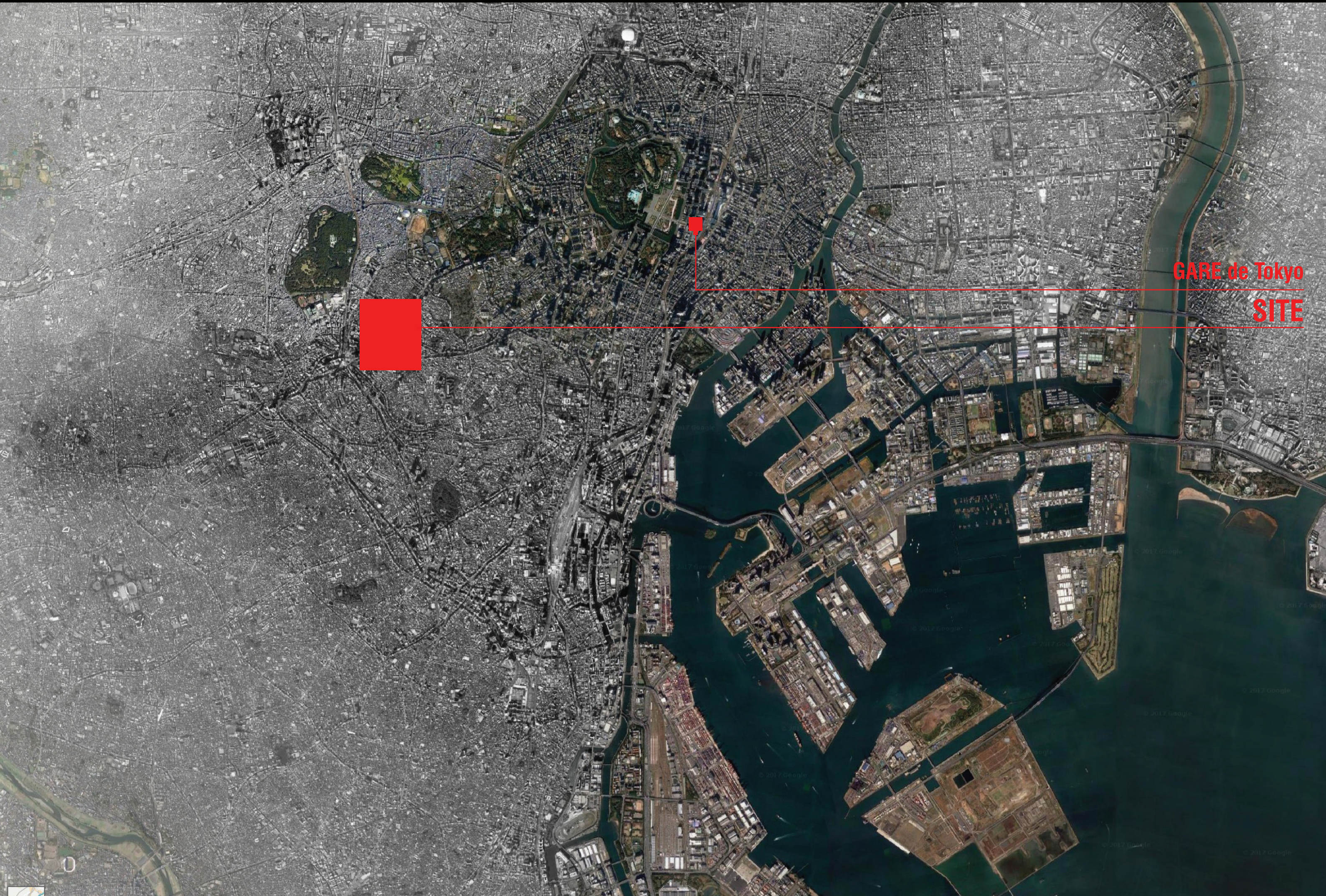
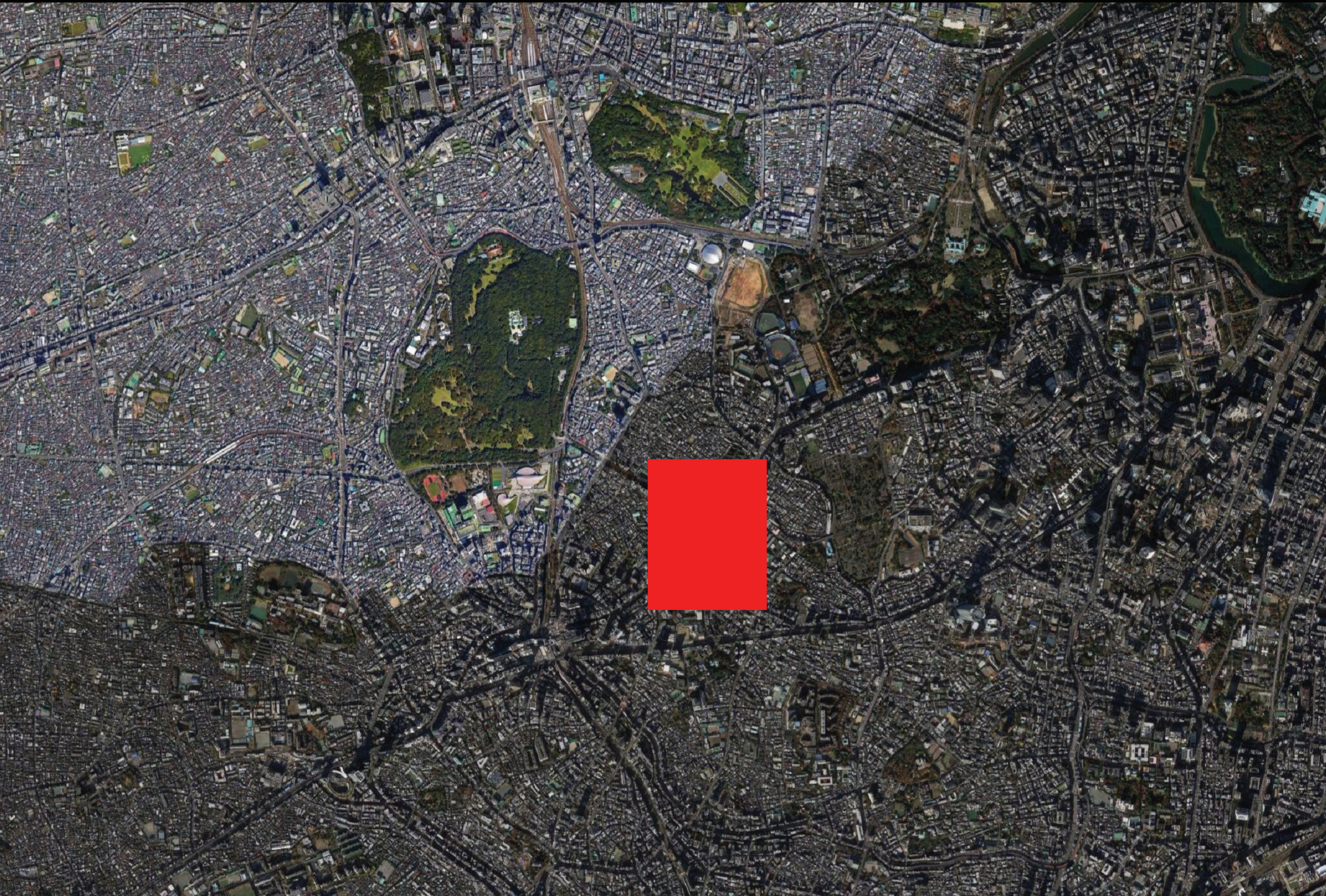


TOUR PARAMETRIQUE-TOKYO
BUREAUX-COMMERCES-GALLERIE D'ART-RESTAURANTS

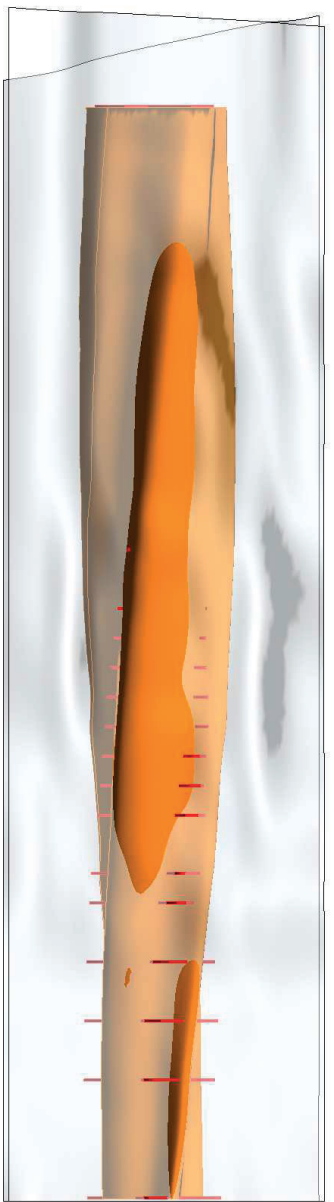




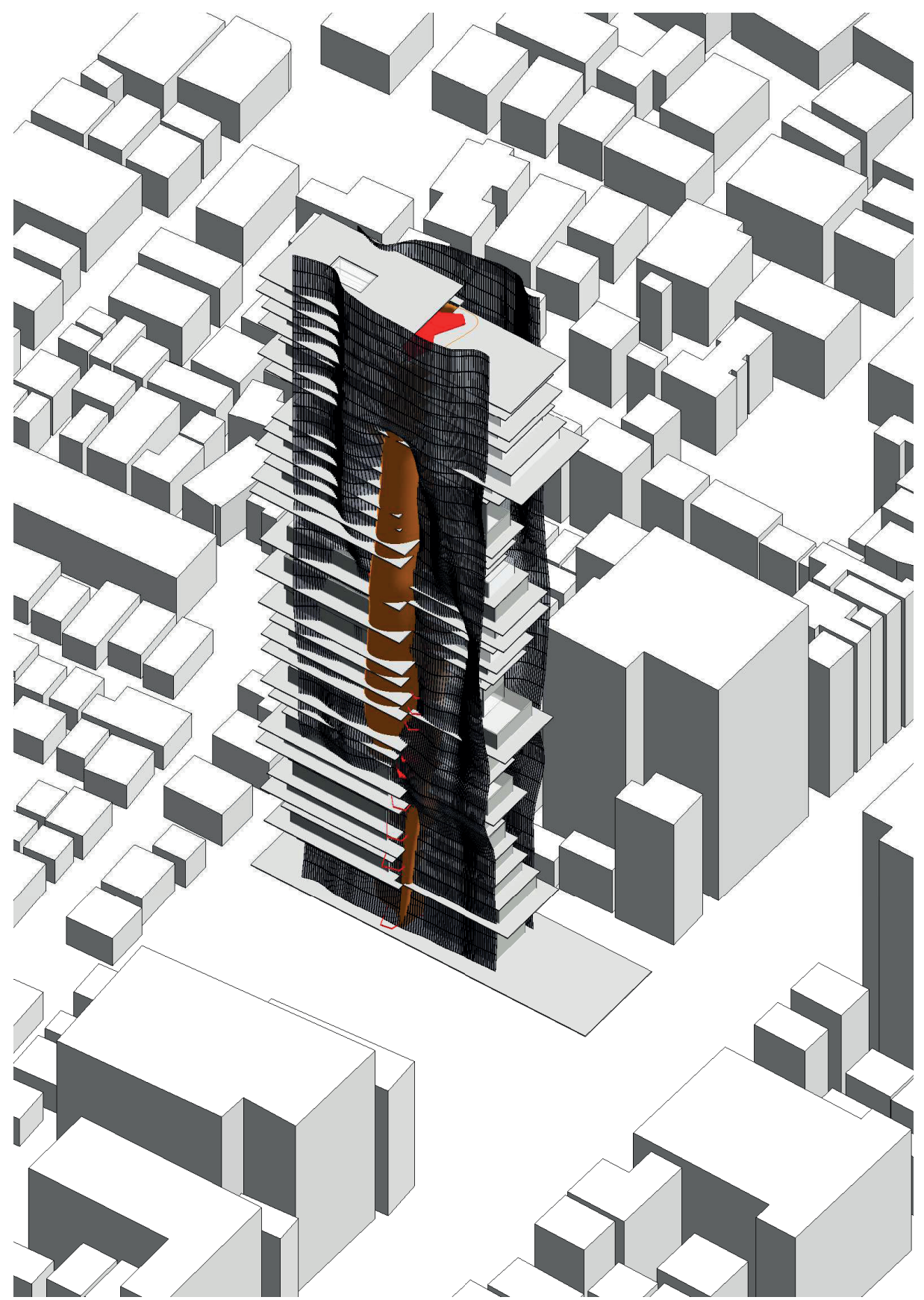
GARE de Tokyo
SITE



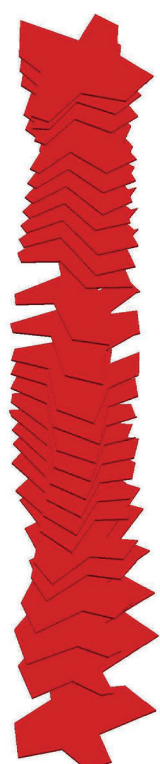




=



NOYAU



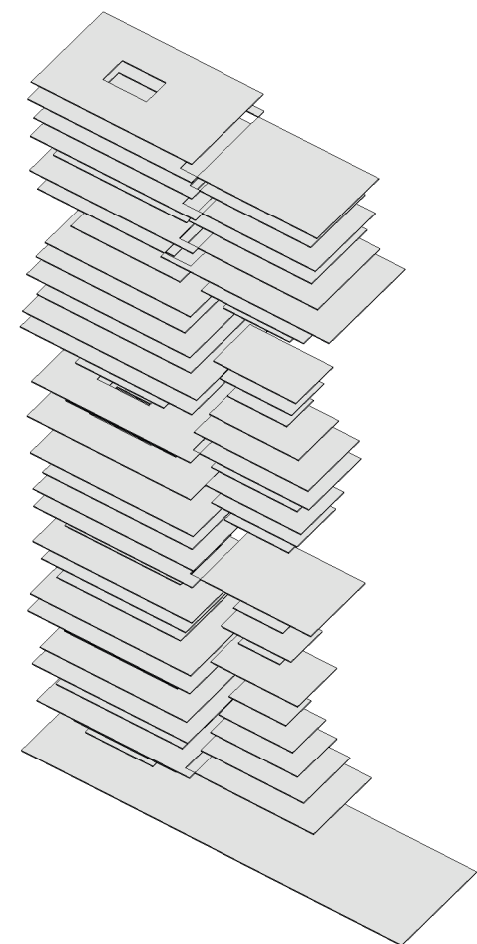
+

MEMBRANE NOYAU



+

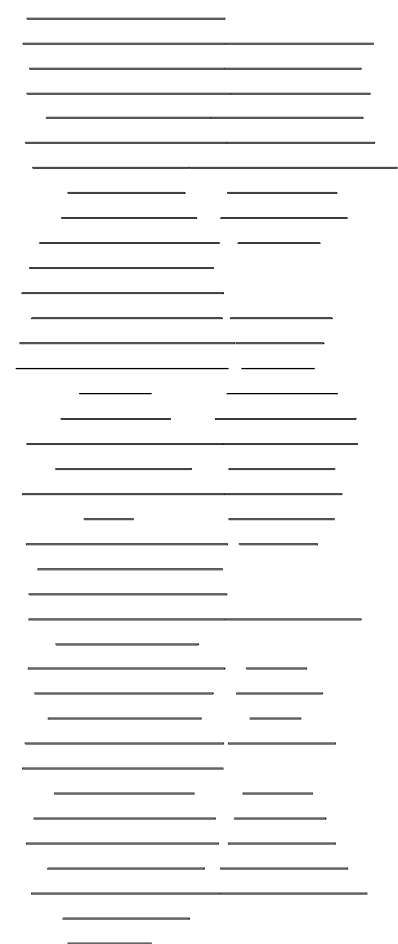
DALLE



+



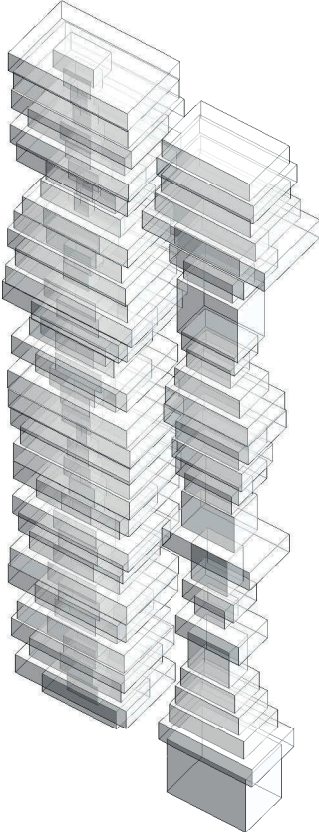
+



BOITE

MEMBRANE

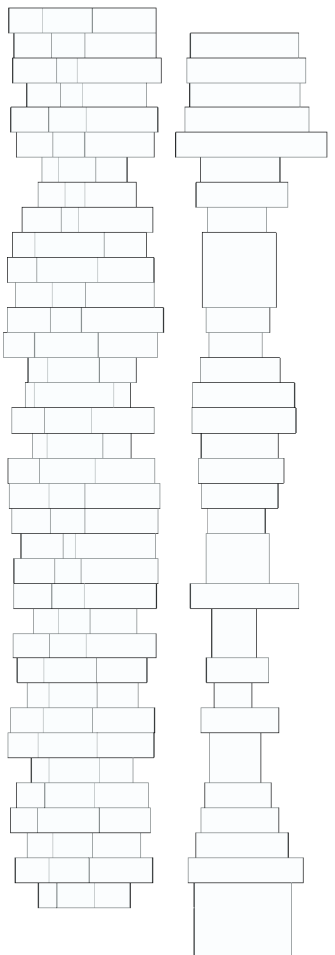
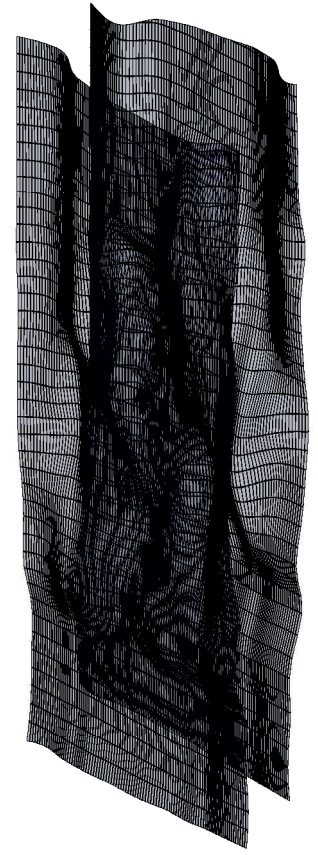
MUR-RIDEAU



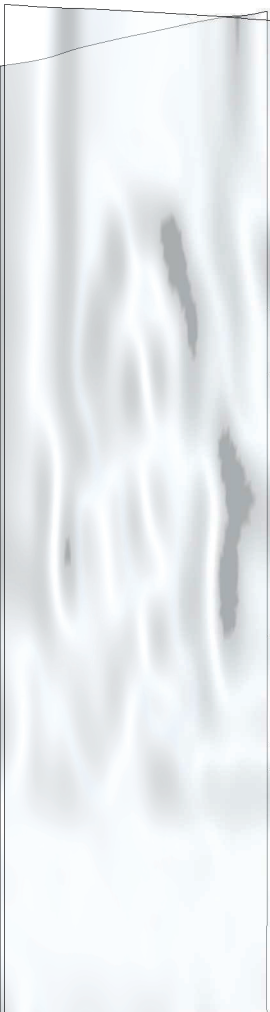
+



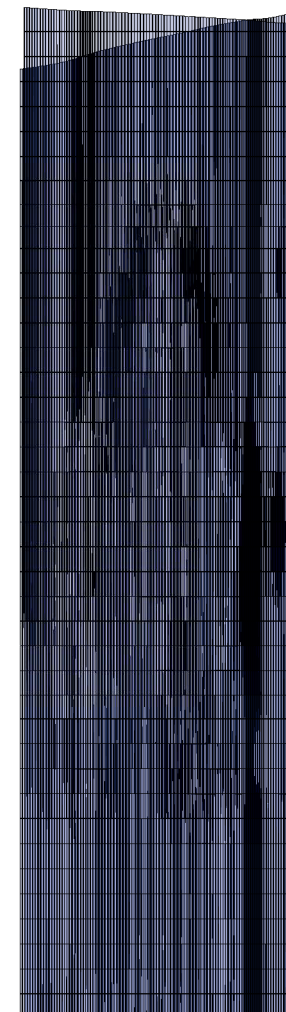
+



+



+



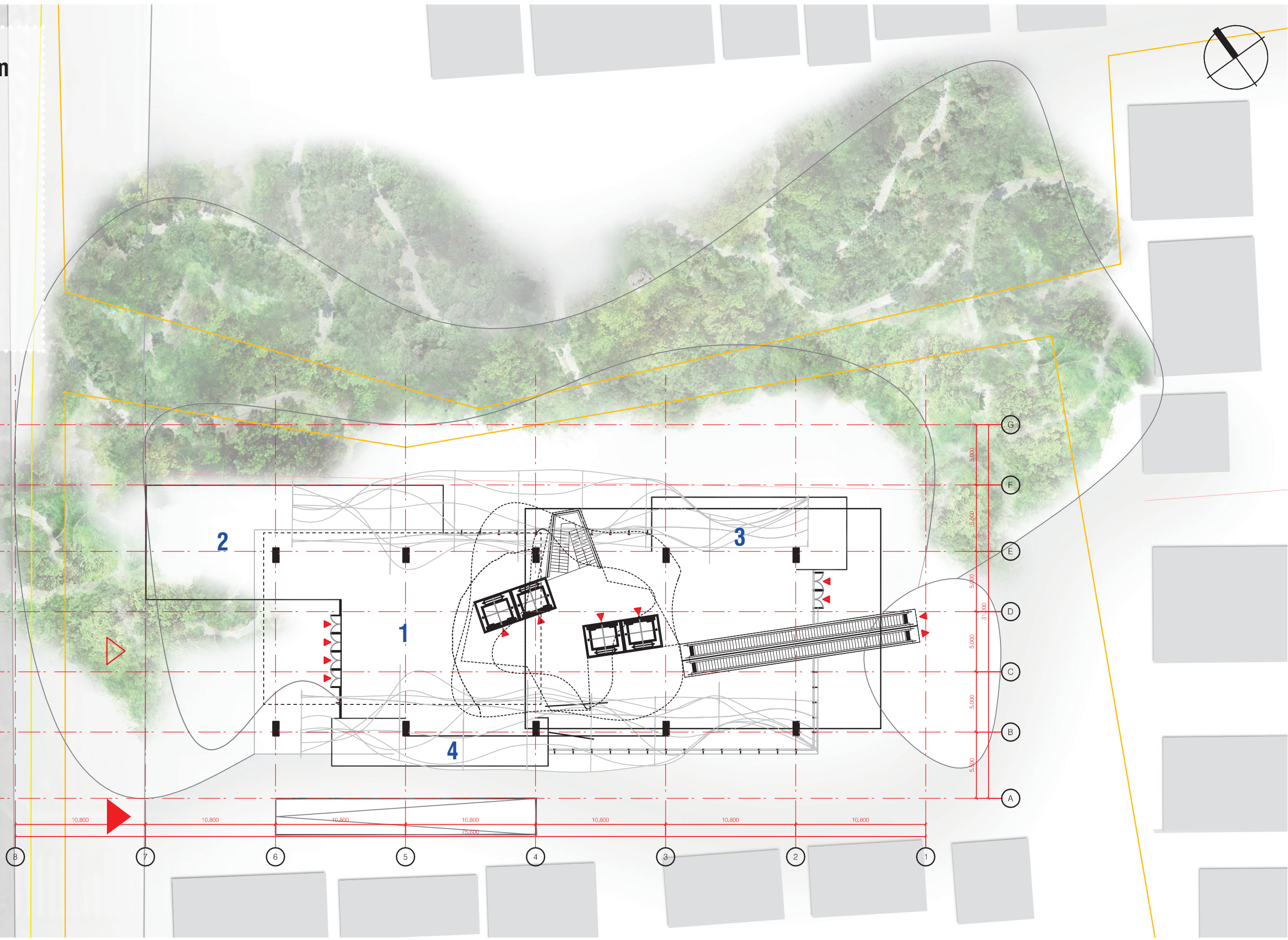
PLAN L0 +0.00m

- 1. LOBBY
- 2. CAFE
- 3. SHOP
- 4 SERVICES



ACCES PIETONS

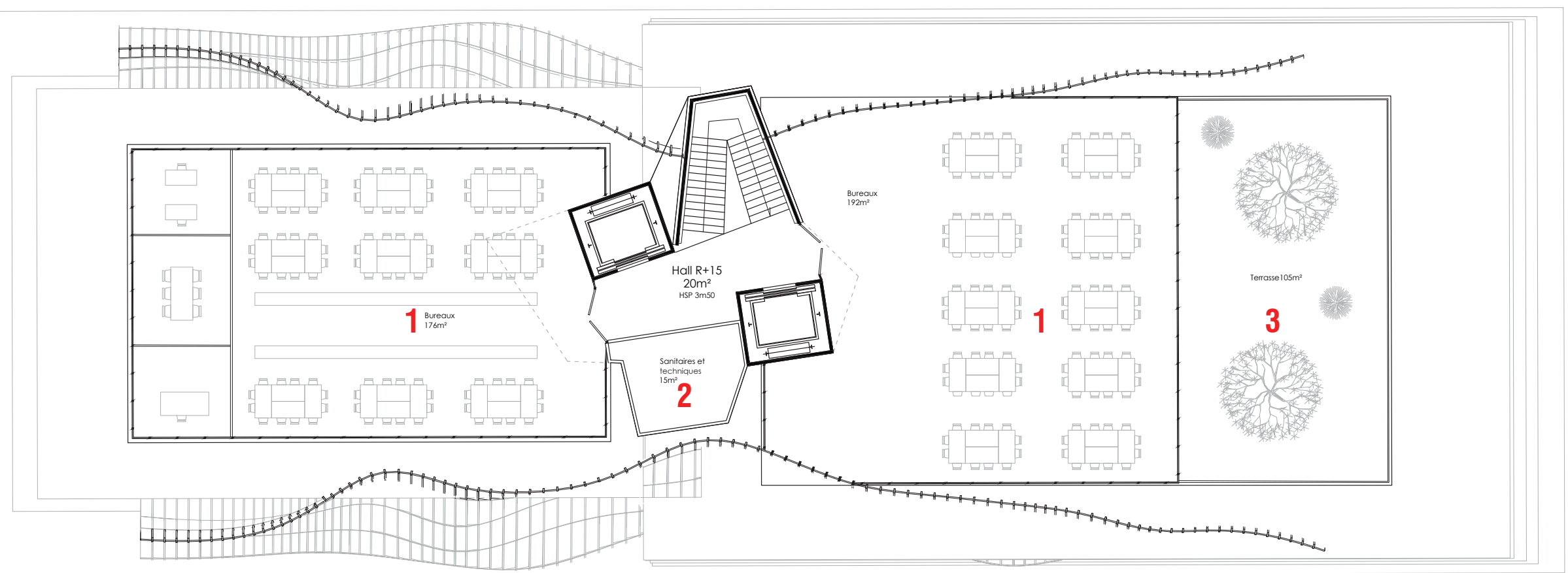
ACCES PARKING



PLAN TYPE

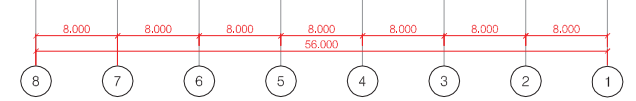
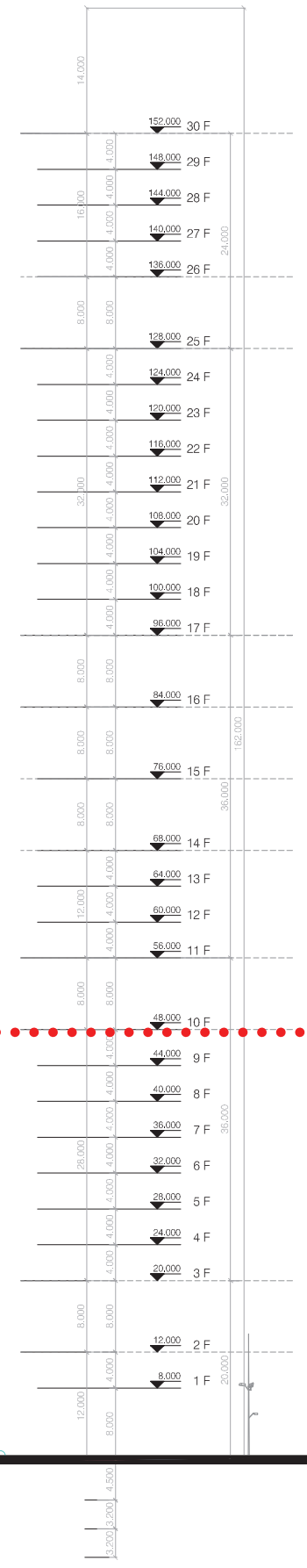
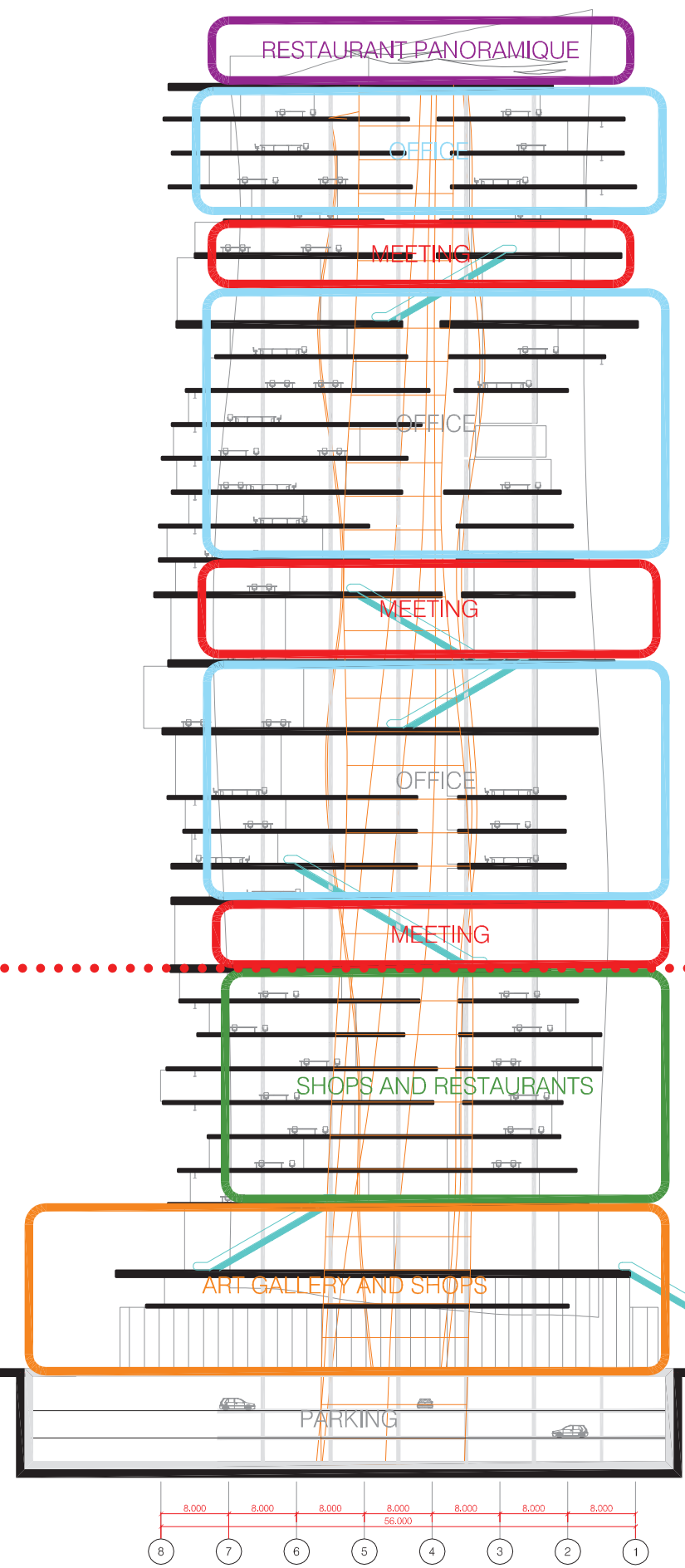


- 1. BUREAUX
- 2. SERVICES
- 3. TERASSE



PRIVATE

PUBLIC



- PARKING
- ART GALLERIE AND SHOPS
- SHOPS AND RESTAURANTS
- MEETING
- OFFICE
- RESTAURANT PANORAMIQUE

