

PROJET A KYOTO :

Le projet est une galerie d'art, sur deux niveaux,

A partir des résultats d'images de Deep-Art, mon modèle grasshoper se constitue de Box et Cylindres,

Le projet se situe au niveau du Delta avec le passage de deux rivières de part et d'autre,

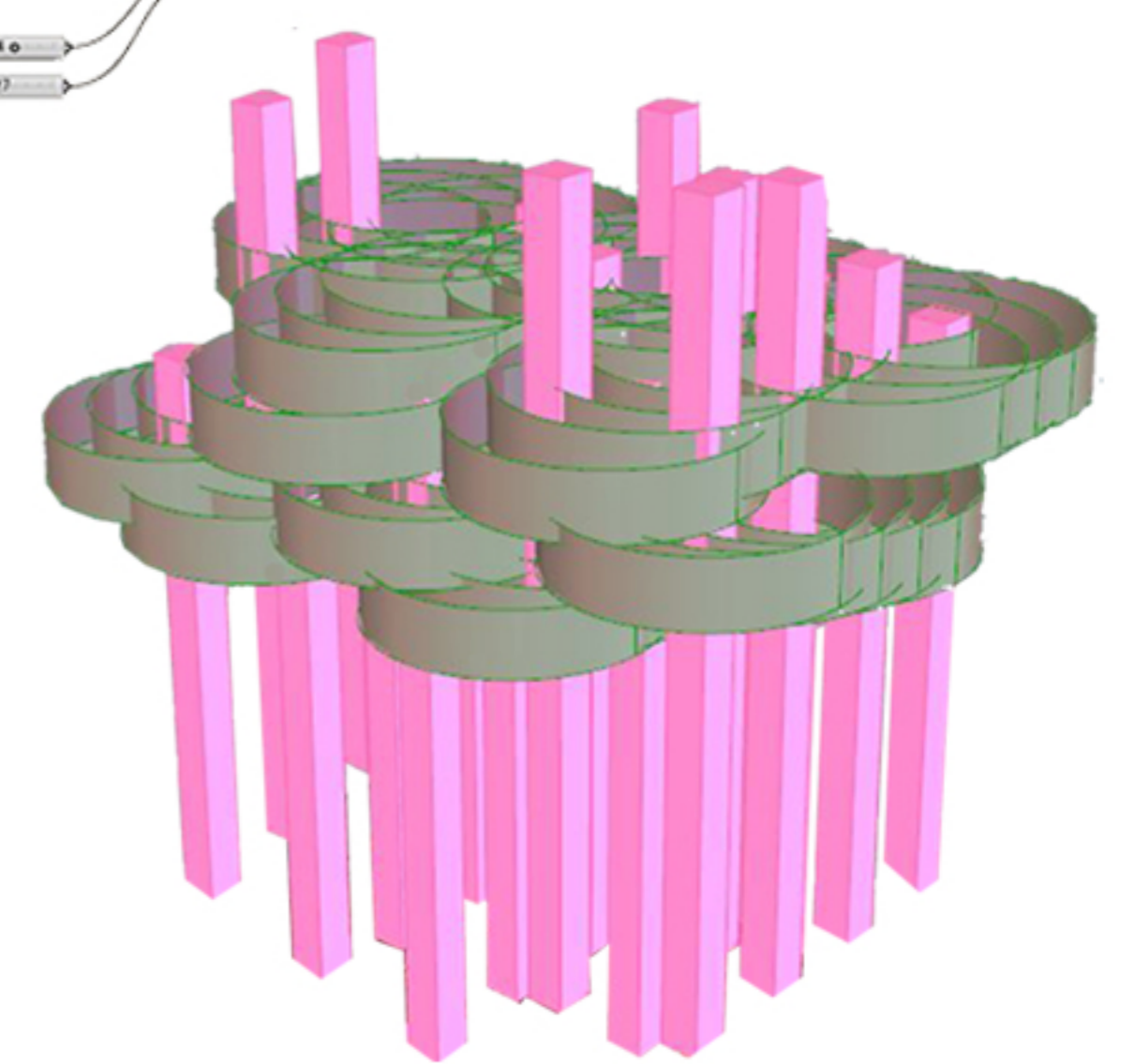
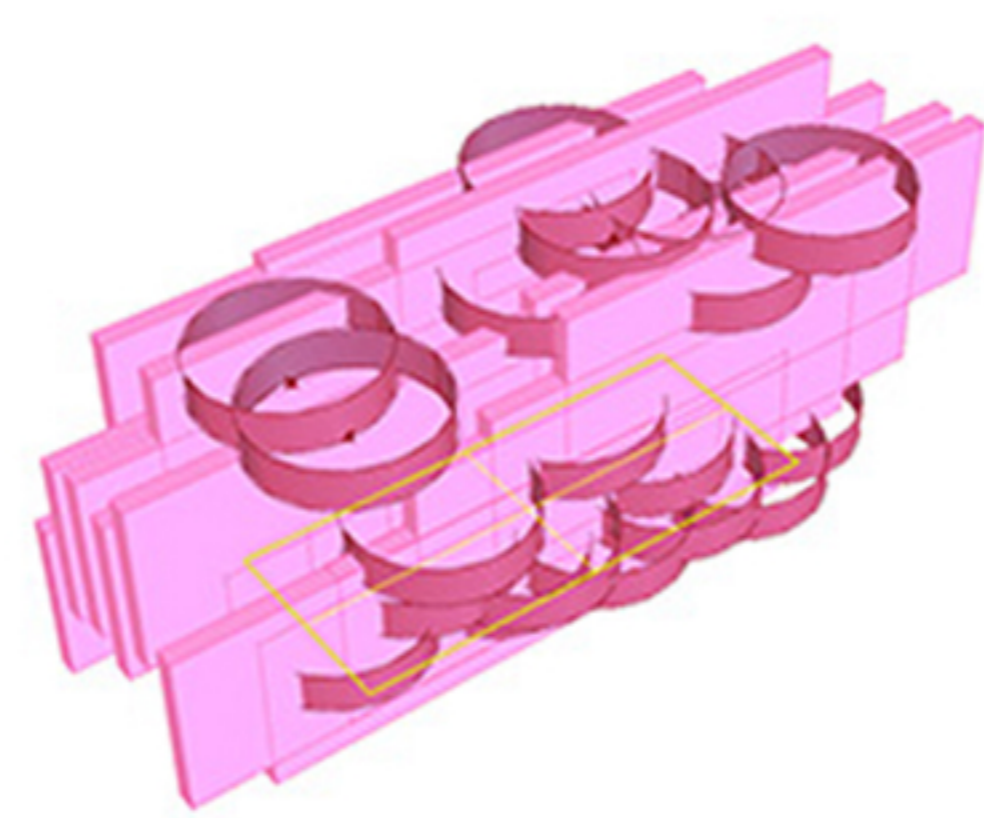
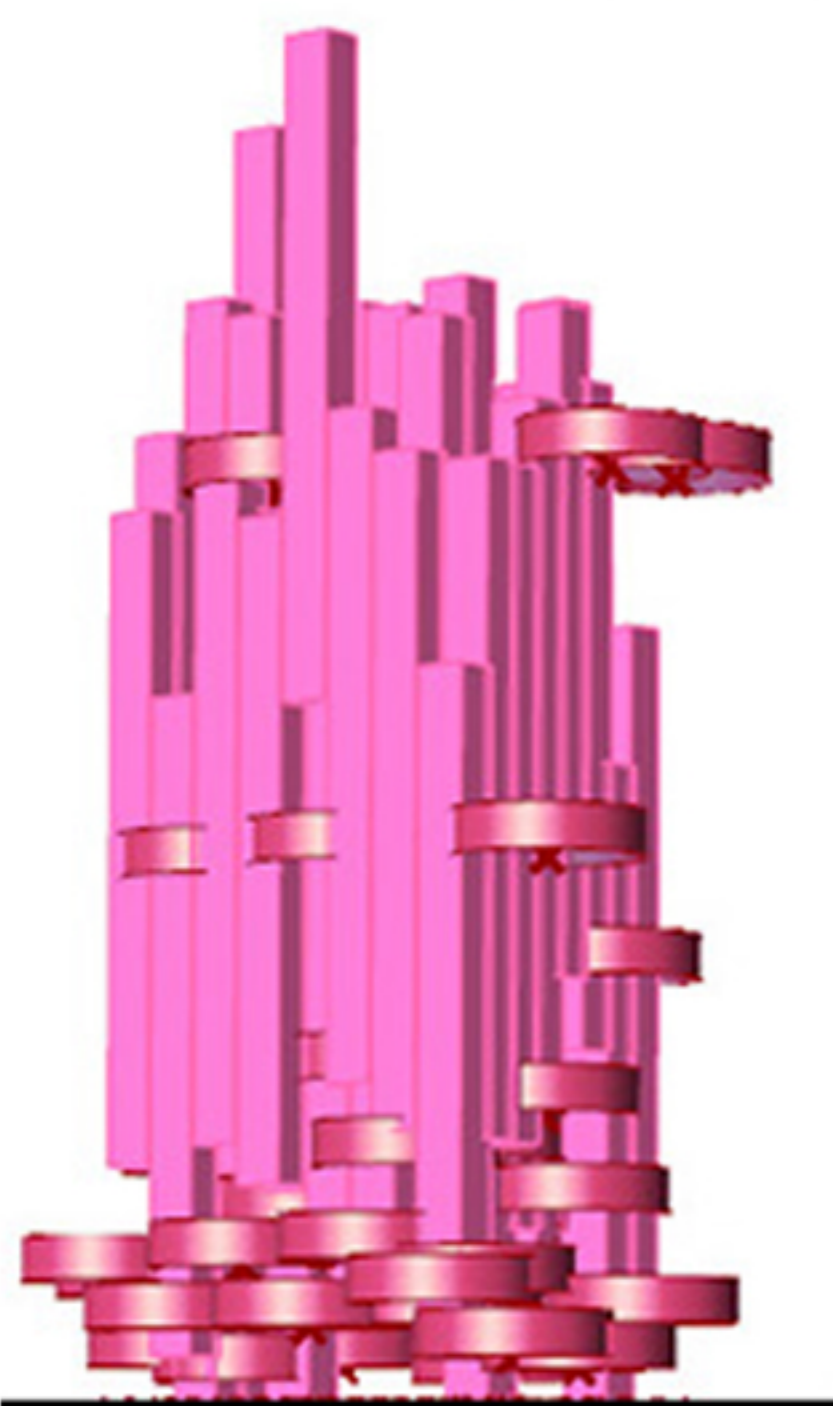
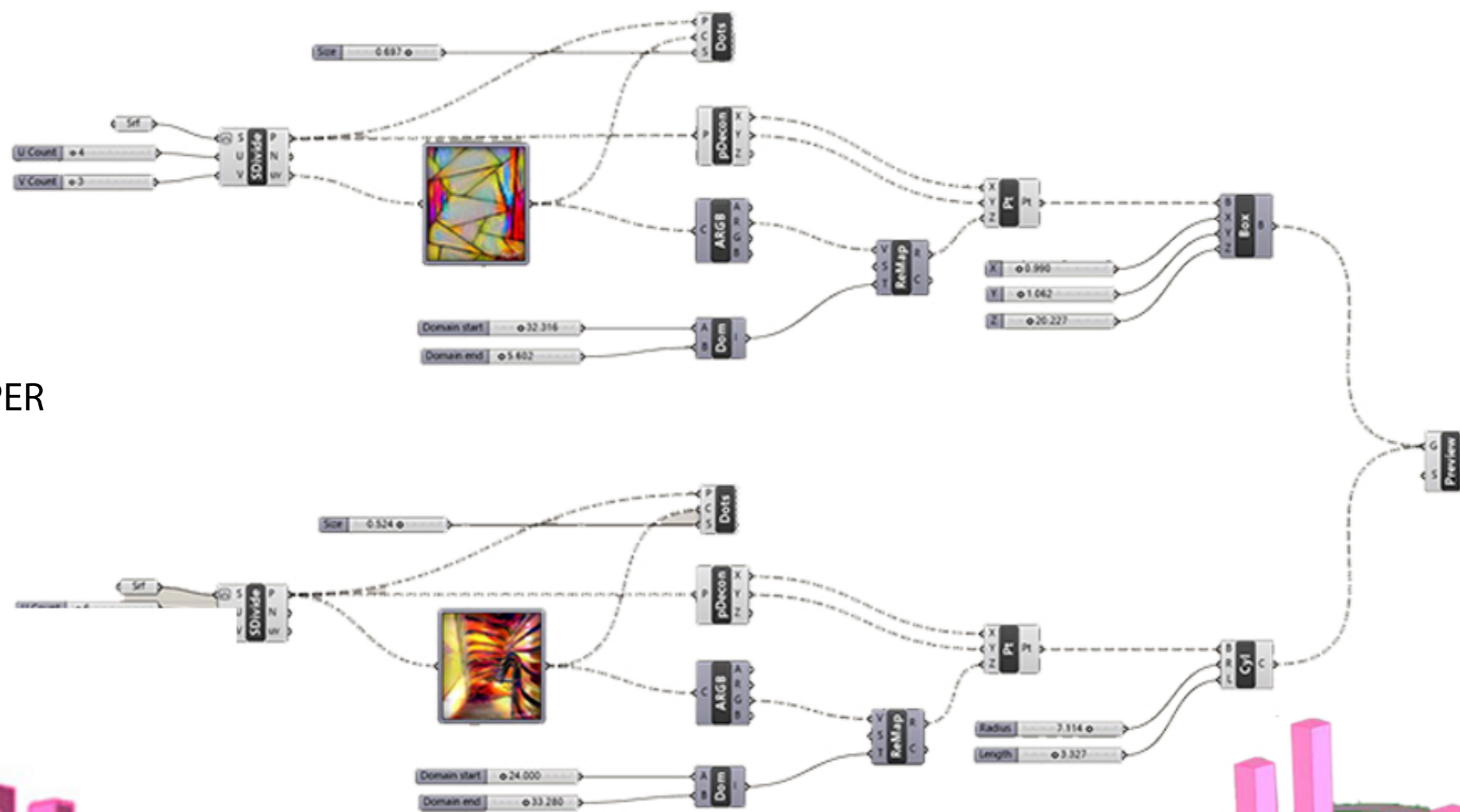
implanté en milieu boisé, il reprend par les parallélépipèdes allongés et les cylindre en hauteur, la métaphore de l'arbre afin d'être en harmonie avec son environnement immédia



DEEP ART



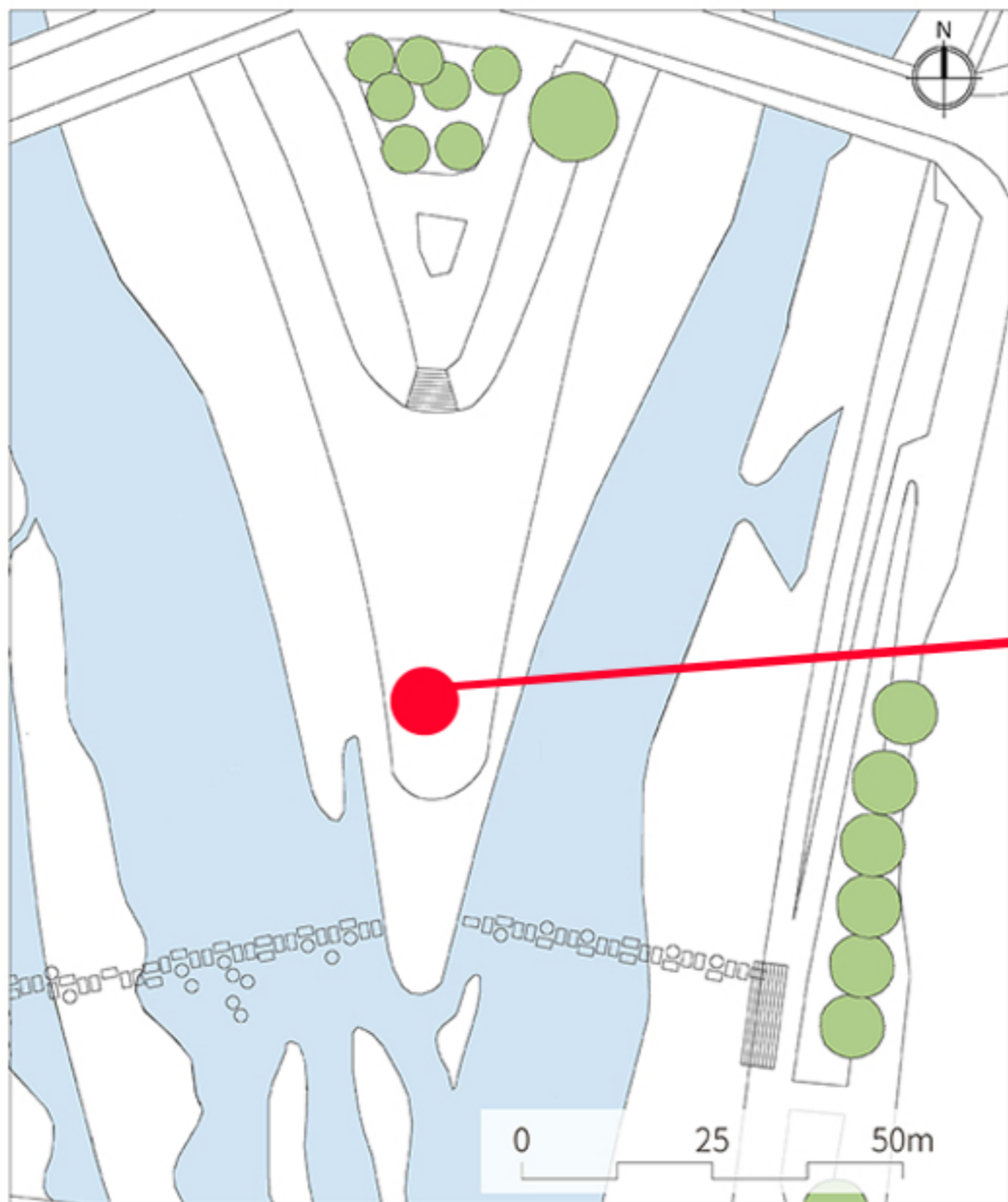
ETAPE GRASSHOPER



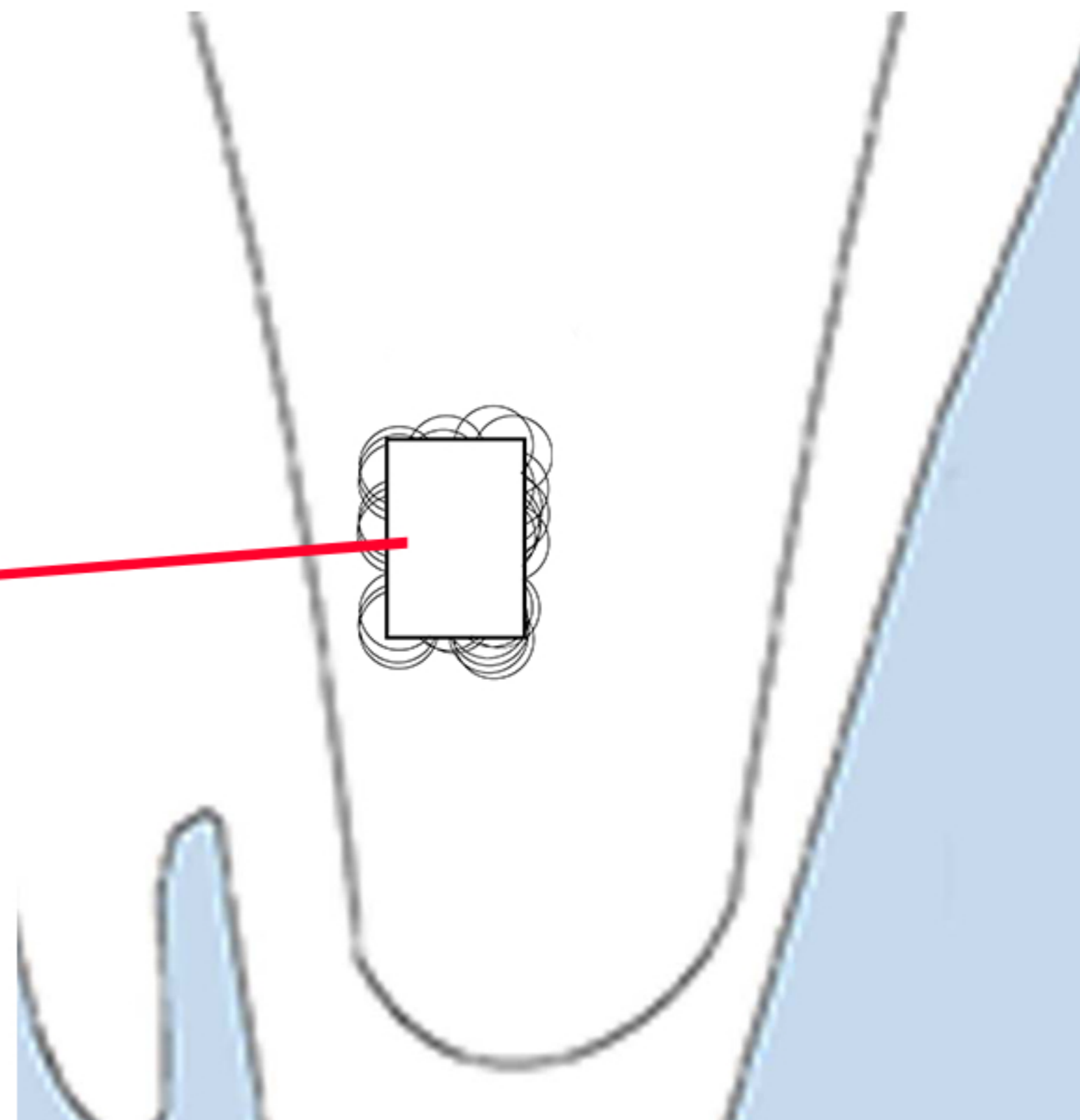
PROPOSITION VERTICALE

PROPOSITION HORIZONTALE

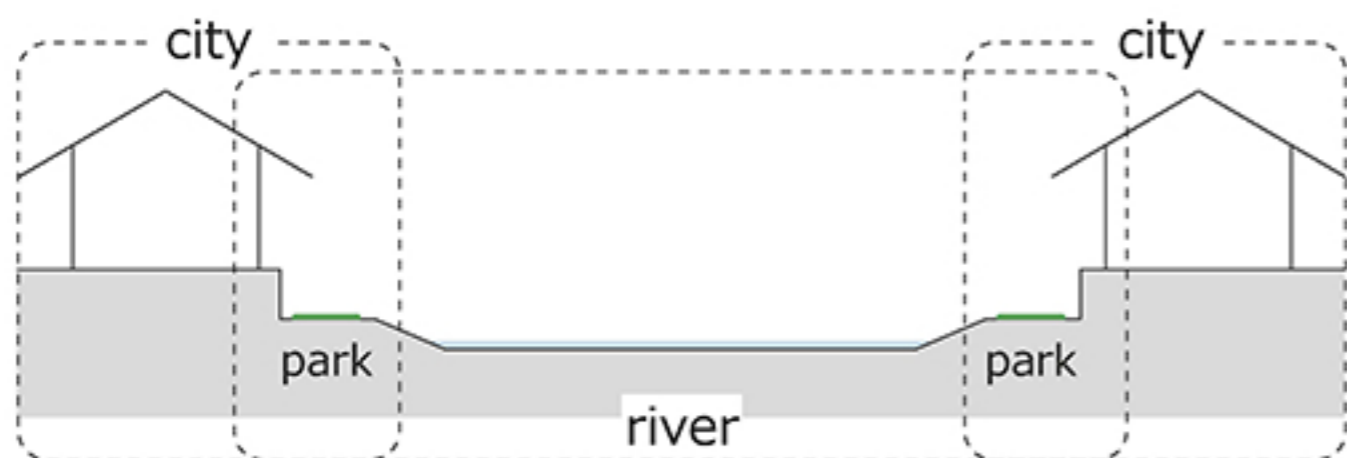
PROPOSITION FINALE



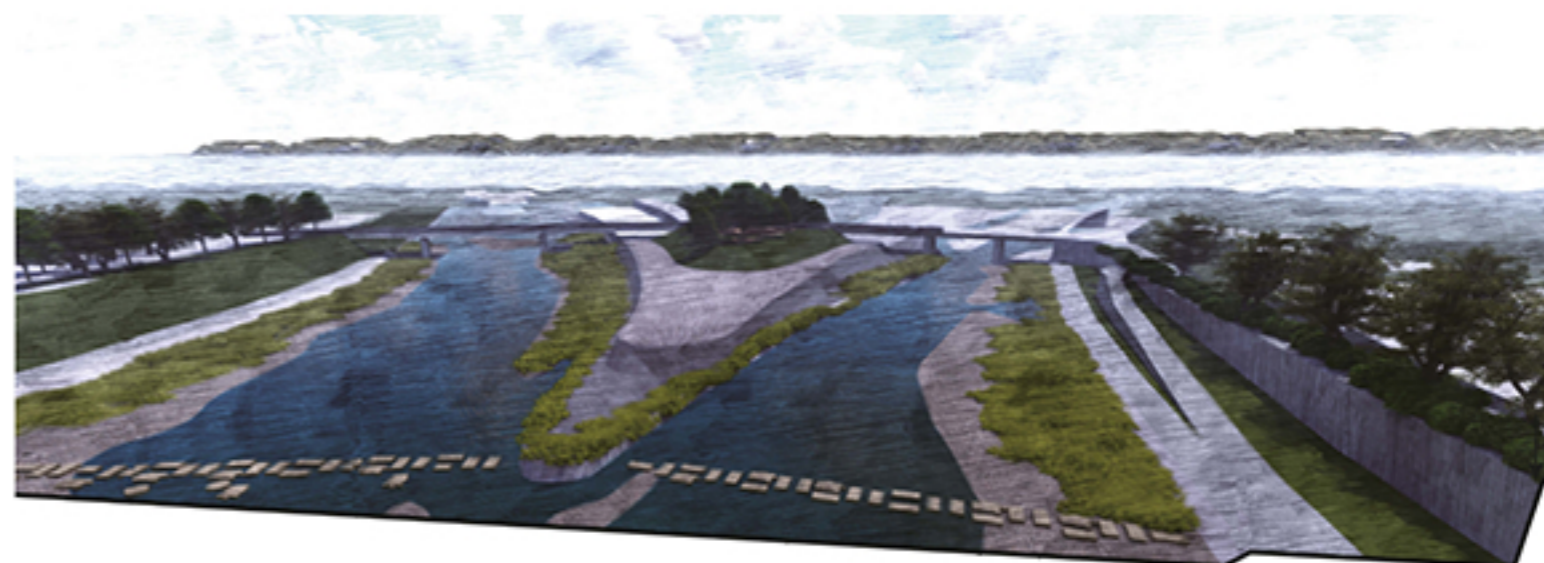
PROPOSITION FINALE



IMPLANTATION DU PROJET



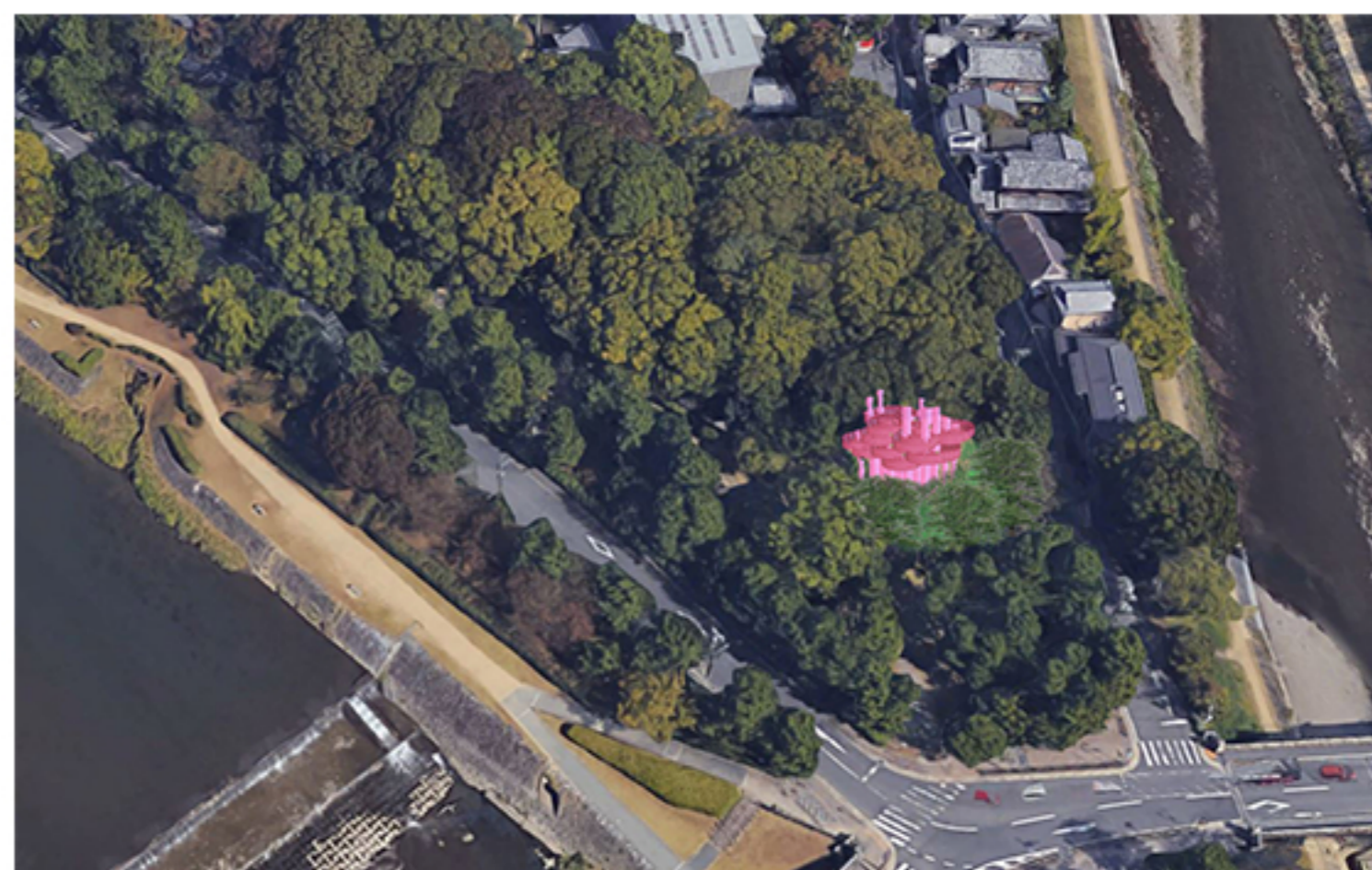
RELATION DE LA VILLE A LA RIVIERE



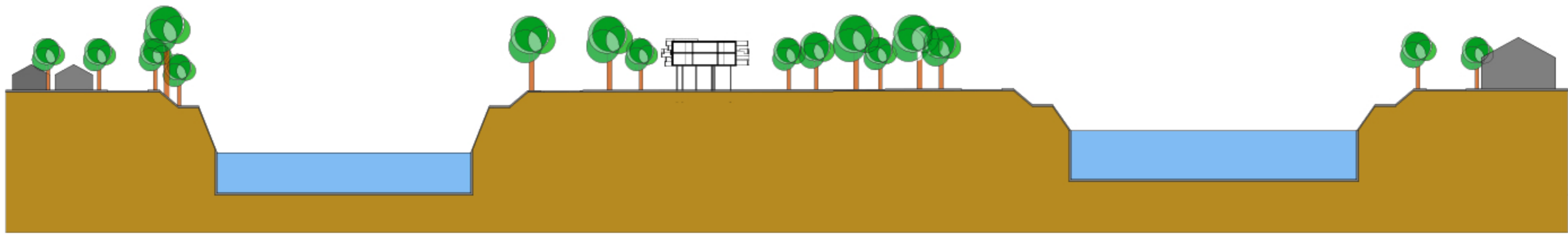
LE SITE : DELTA



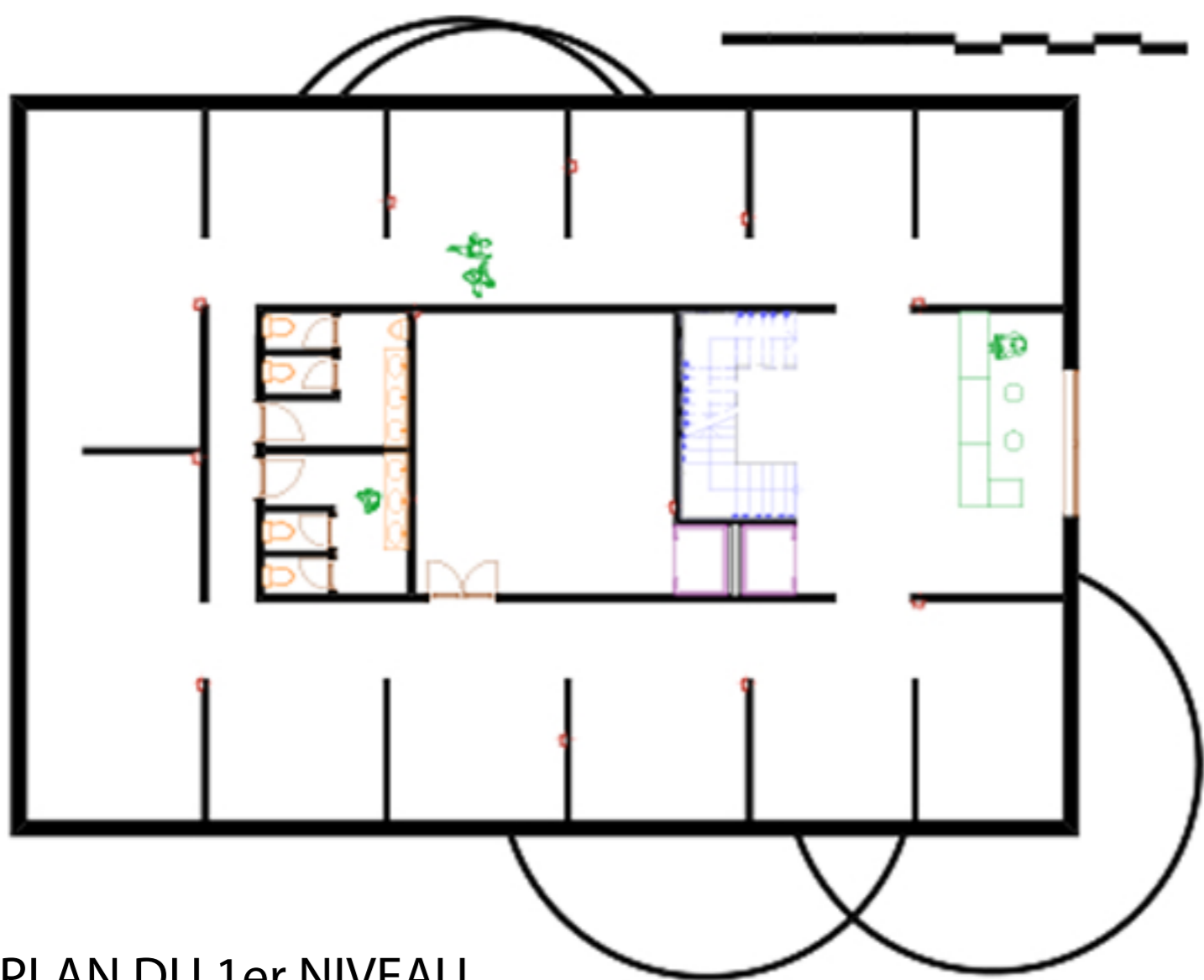
VUE AERIEENNE



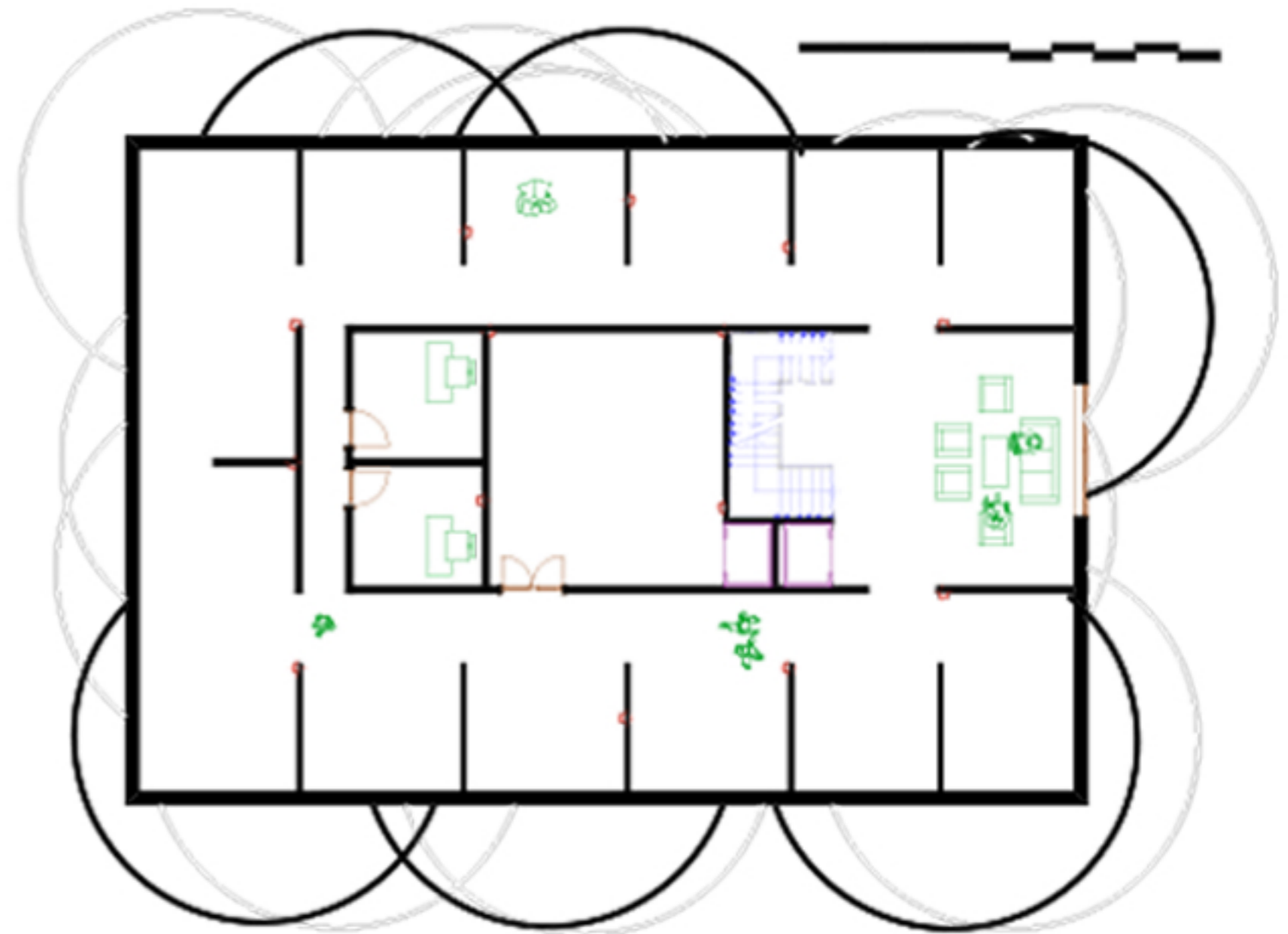
IMPLANTATION DU VOLUME



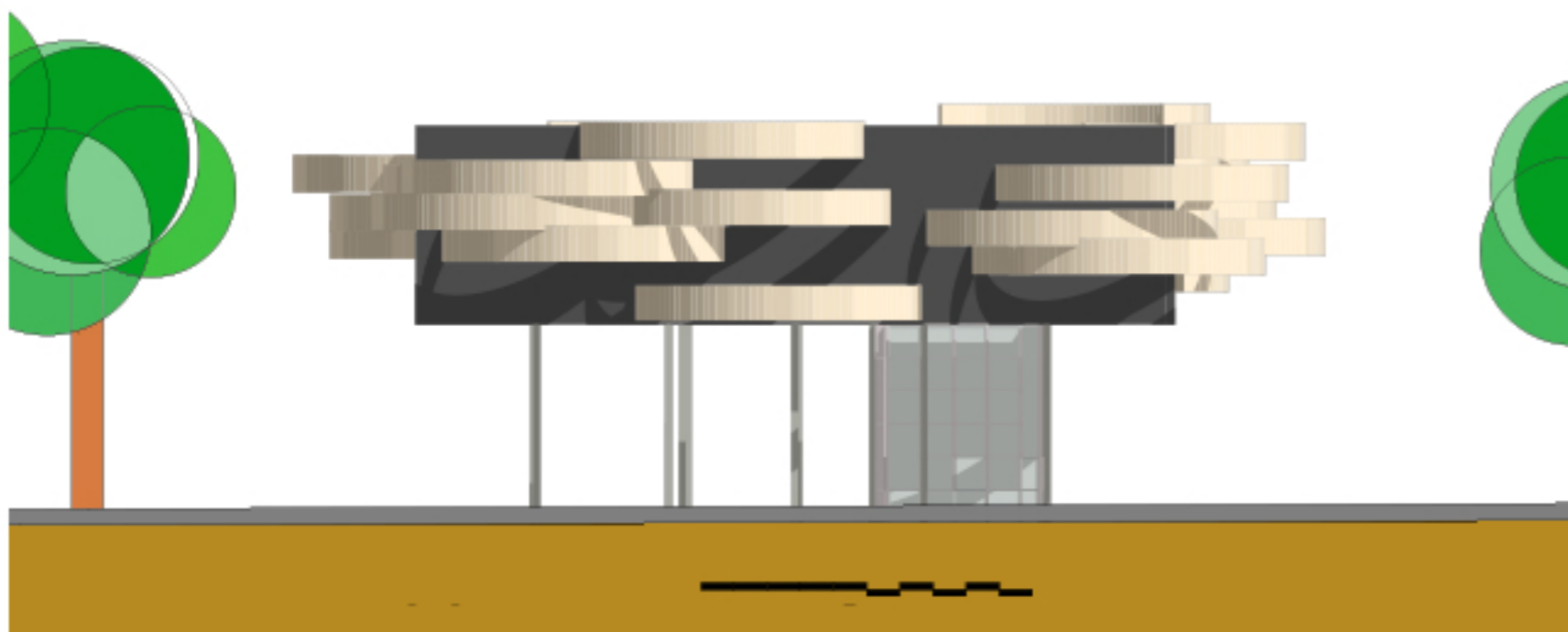
COUPE SUR LE DELTA AVEC LE PROJET



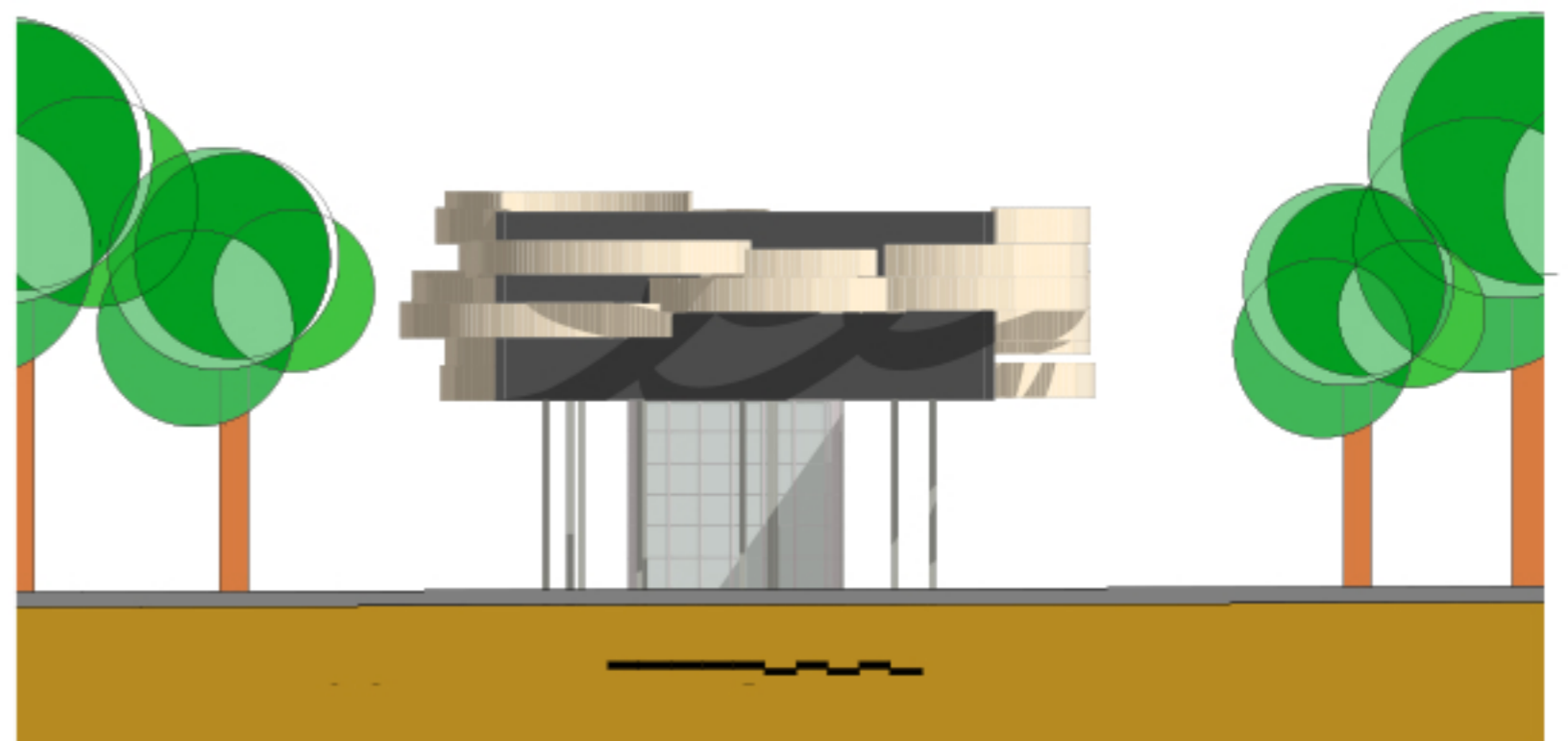
PLAN DU 1er NIVEAU



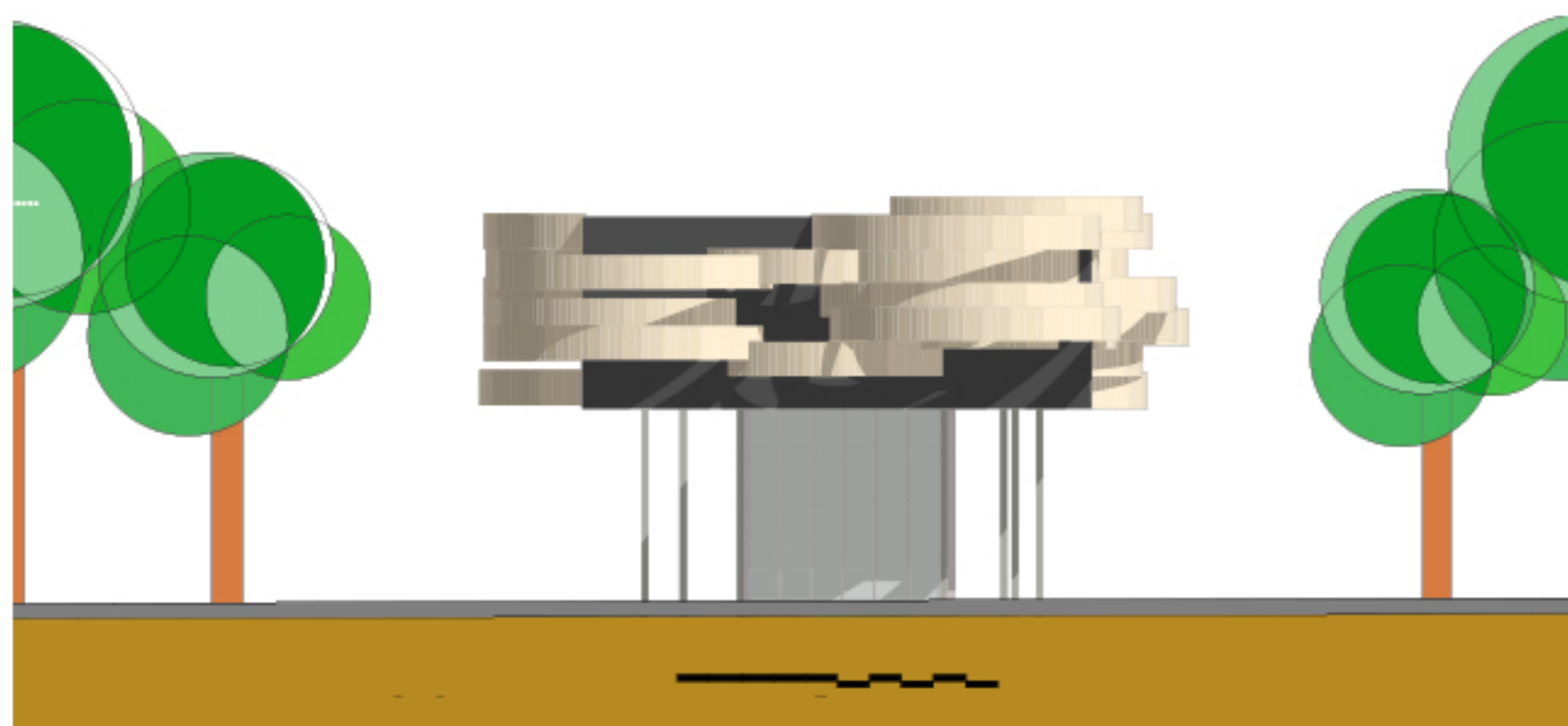
PLAN DU 2nd NIVEAU



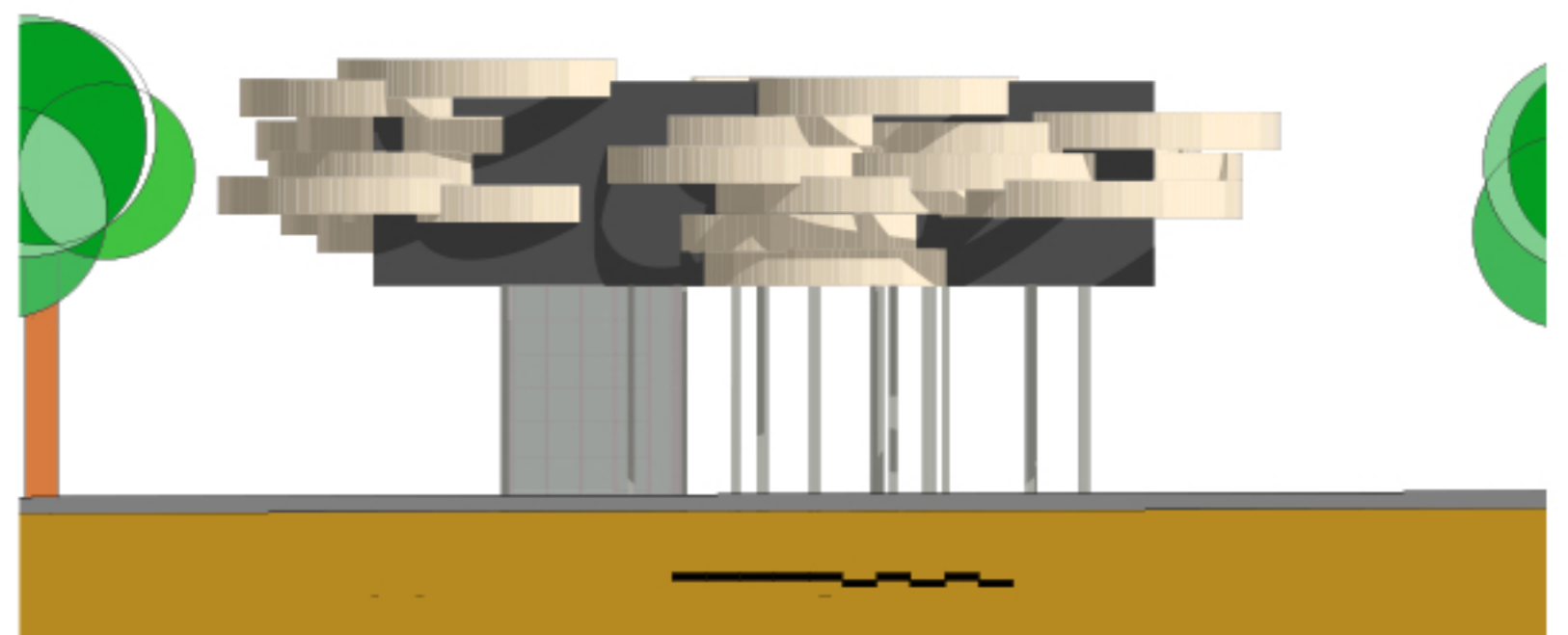
FACADE OUEST



FACADE NORD



FACADE SUD



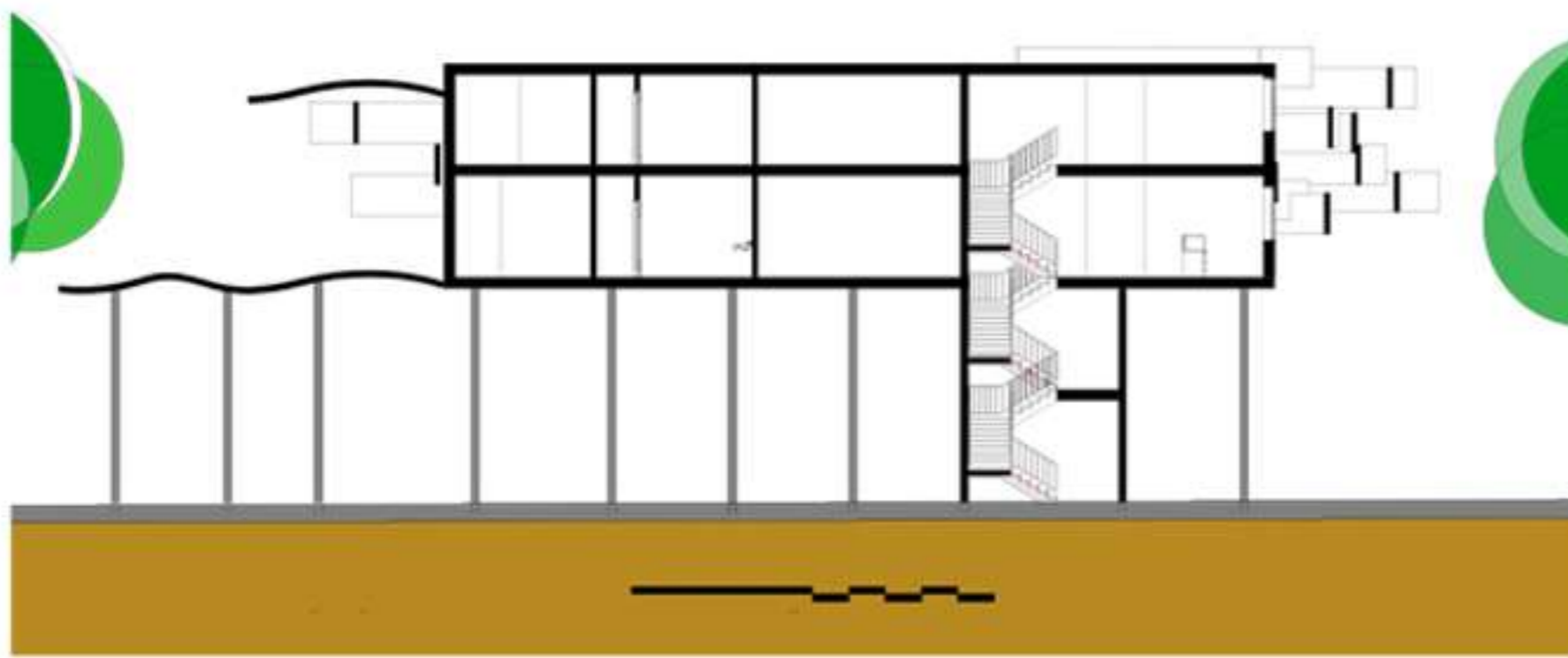
FACADE EST



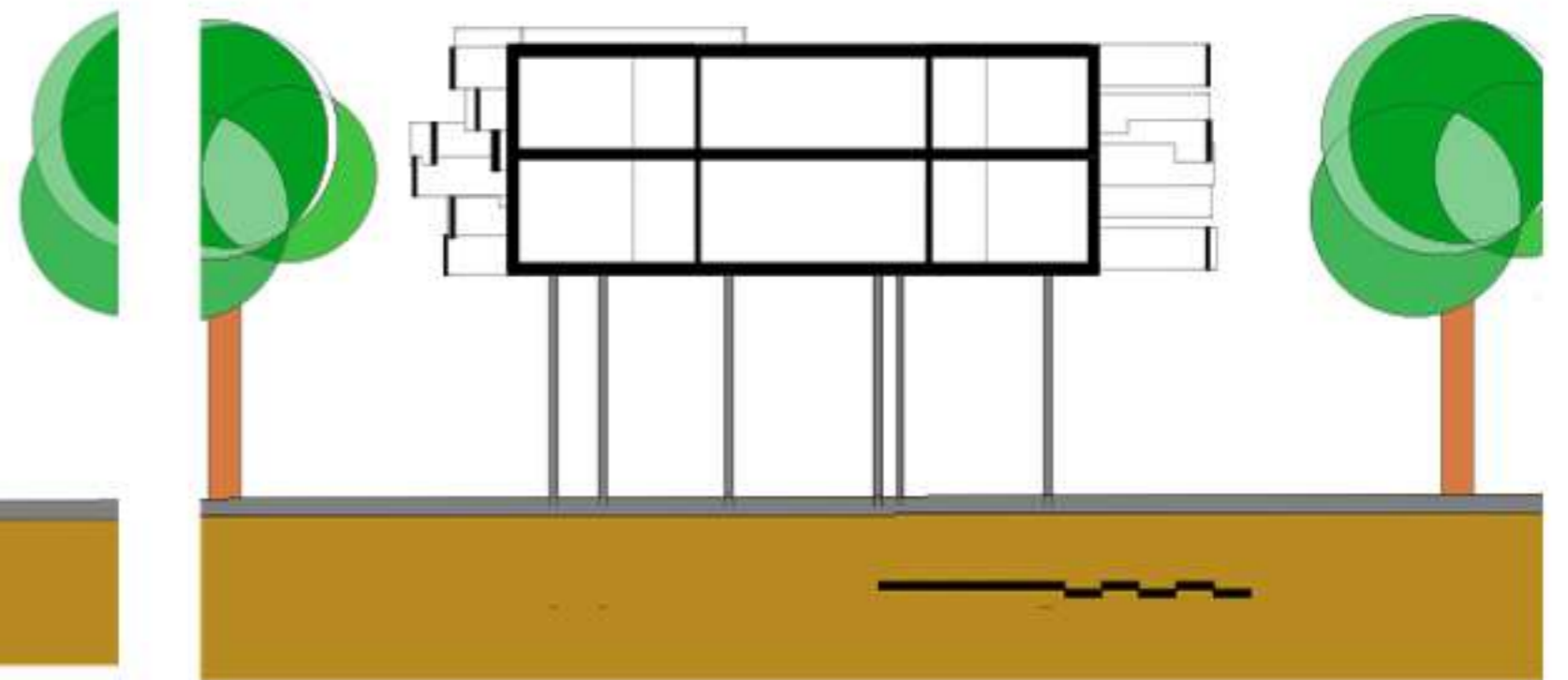
IMAGE DE SYNTHESE 3D _1



IMAGE DE SYNTHESE 3D _2



COUPE A-A



COUPE B-B



IMAGE DE SYNTHESE 3D _3



PHOTO DE LA MAQUETTE



PHOTO DE LA MAQUETTE