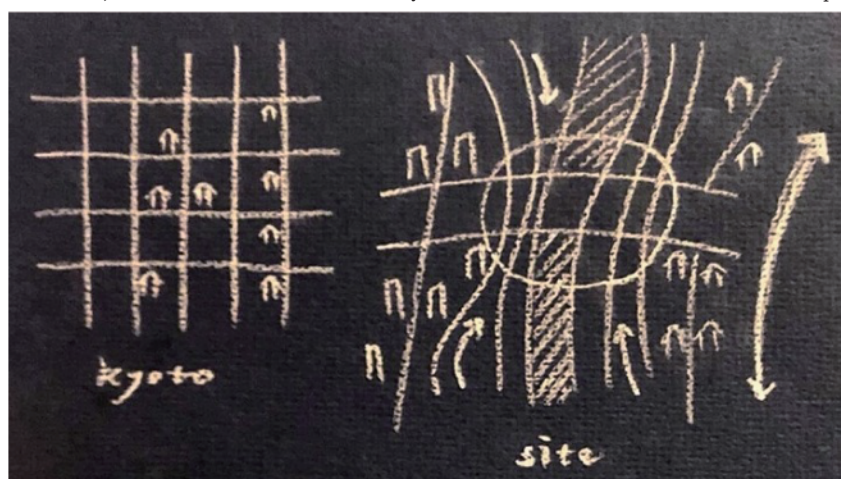
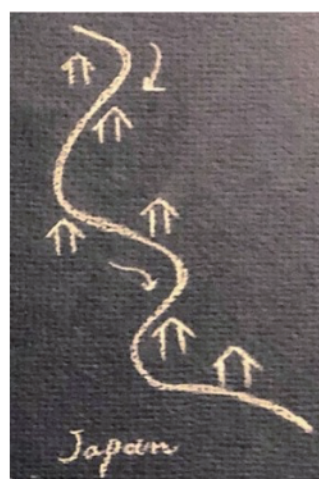


The site is where the GOJO street and the KAMOGAWA river crossed.
here is one of important site in Kyoto.

the left diagram is ordinary kyoto town. it is grid plan.
However, the site is twisted by river. Some line mix in this place.



the site is a place divided by a road and the river.
I set the site to across a road and the river.



In japan, the city has been made
along the line like river. So
there are not place like a
Concorde. Perhaps, we want to have
a big park as an accent.



Metro and river and moat and some roads are mixed in this site.



① river side for 2 or 3 people

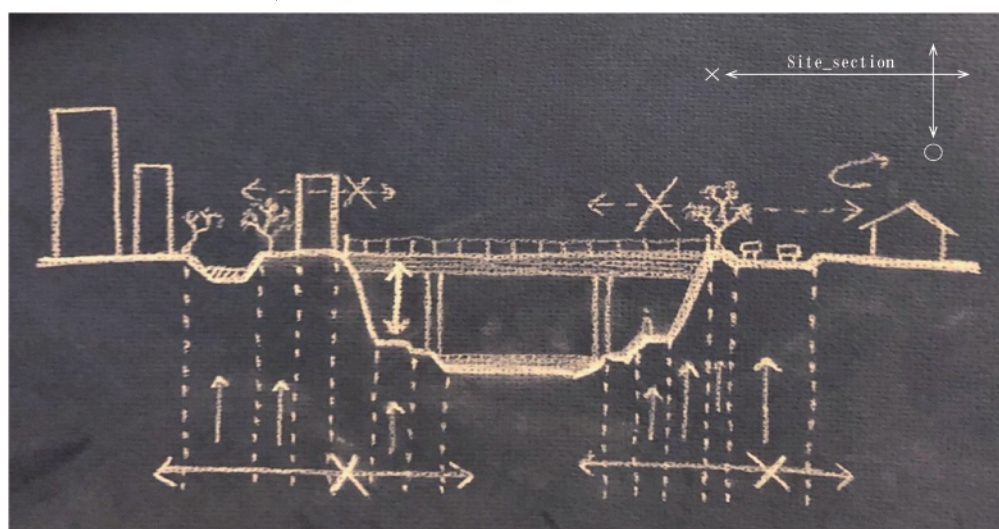
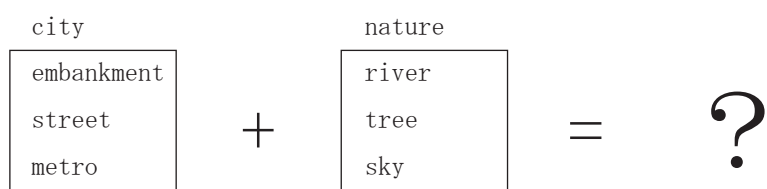


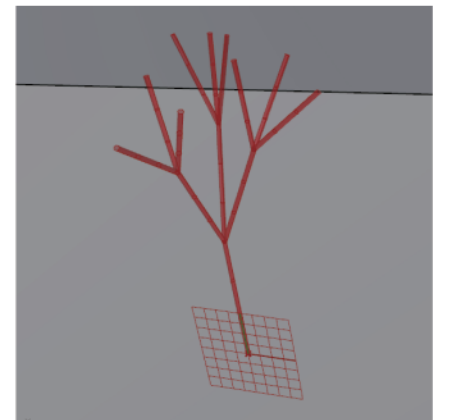
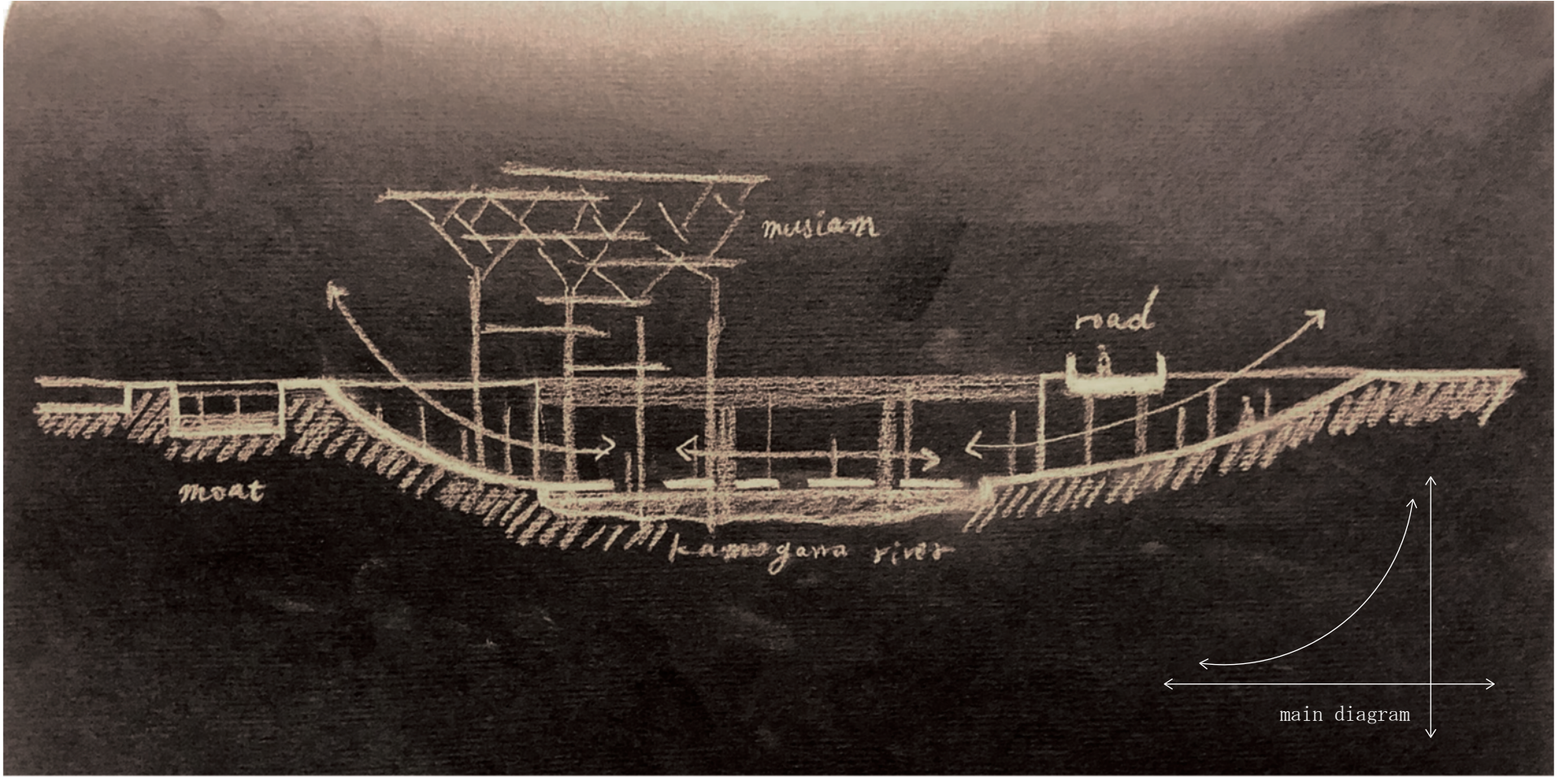
② main road and embankment



③ moat and tree

One direvntion is comfortable.
But the oather one direction is hard to cross.
The question is how to connect the direction more comfortable.

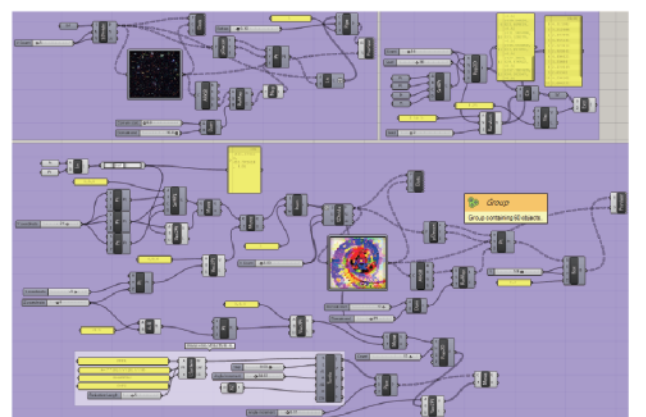
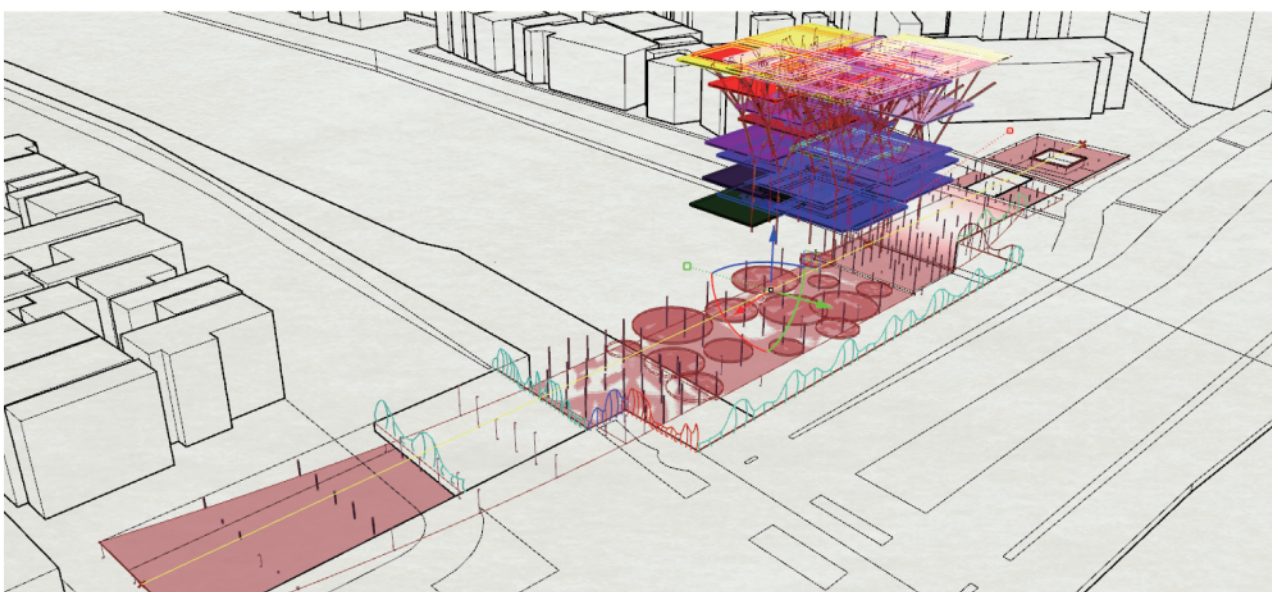




↑ other parameters

- structure like tree
- arrangement of stars

← brightness × saturation
city nature



grasshopper

