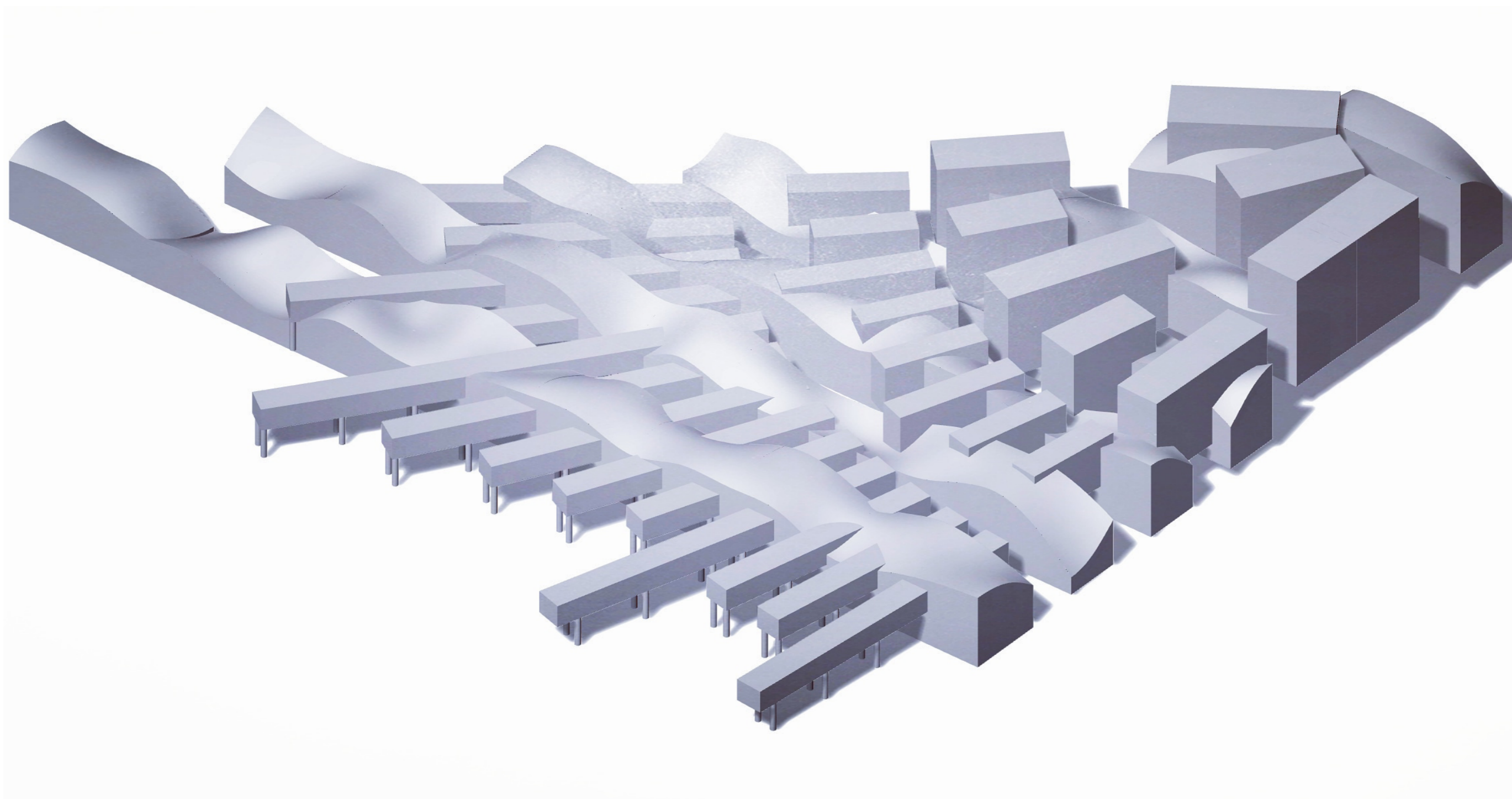


FAN COMPLEX : P916

No.19441 TOMOHIRO MAEDA



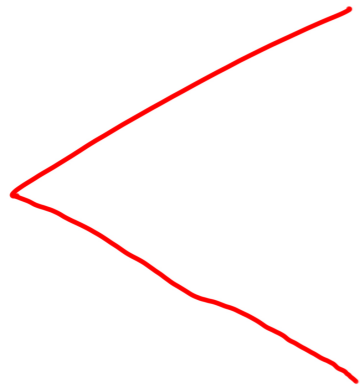
■ SITE : HIKARI PARK





■ DIAGRAM

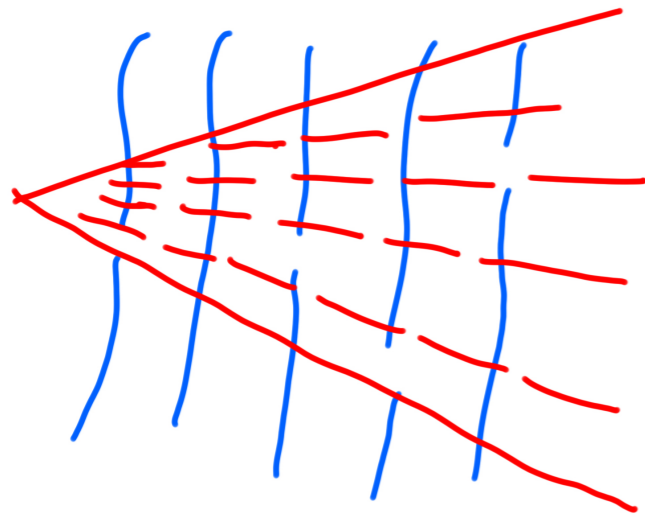
● Kyoto station = City Line



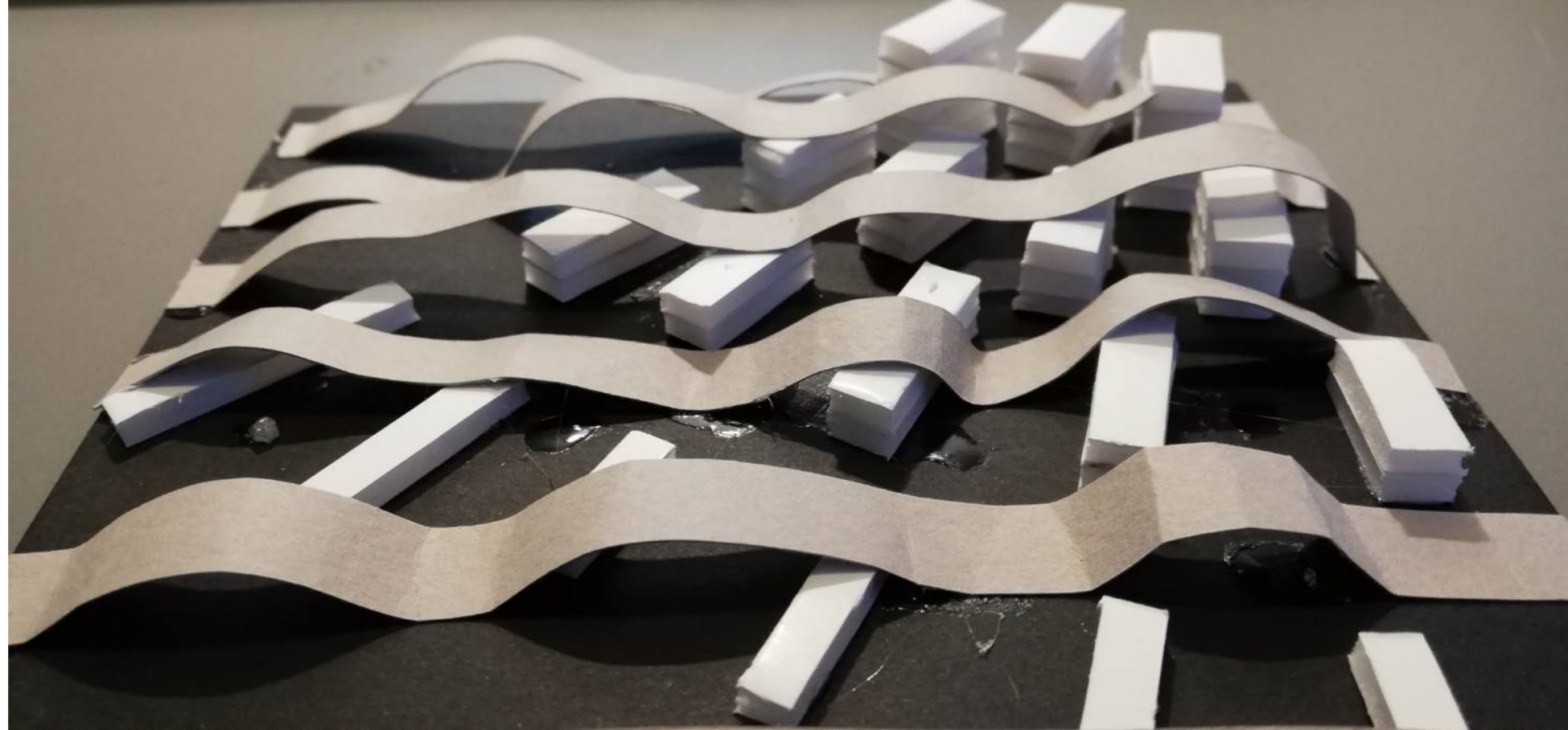
● Kamo River = Natural Line



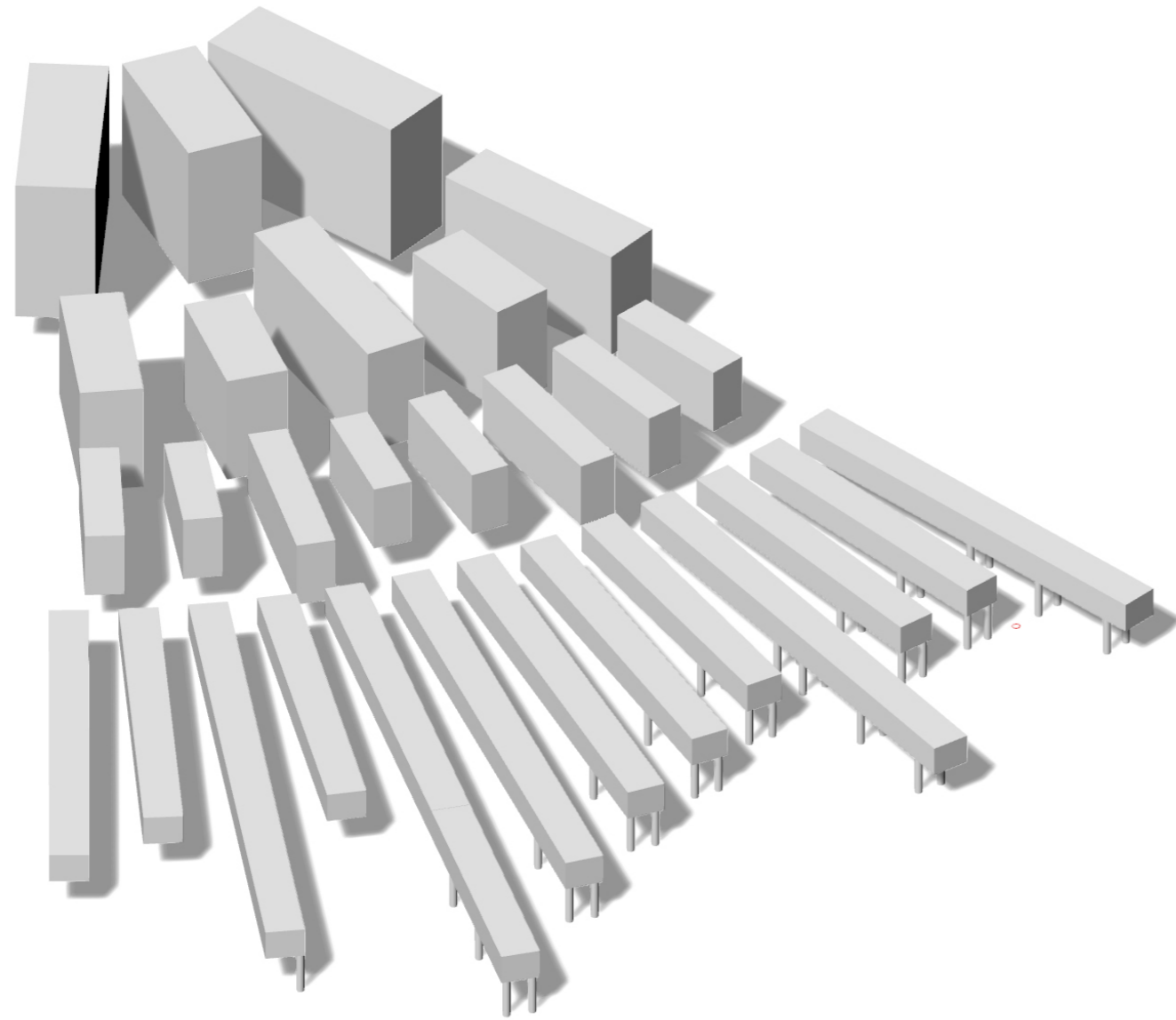
Mix two lines 'City-Nature' into the site and make a volume of architectures



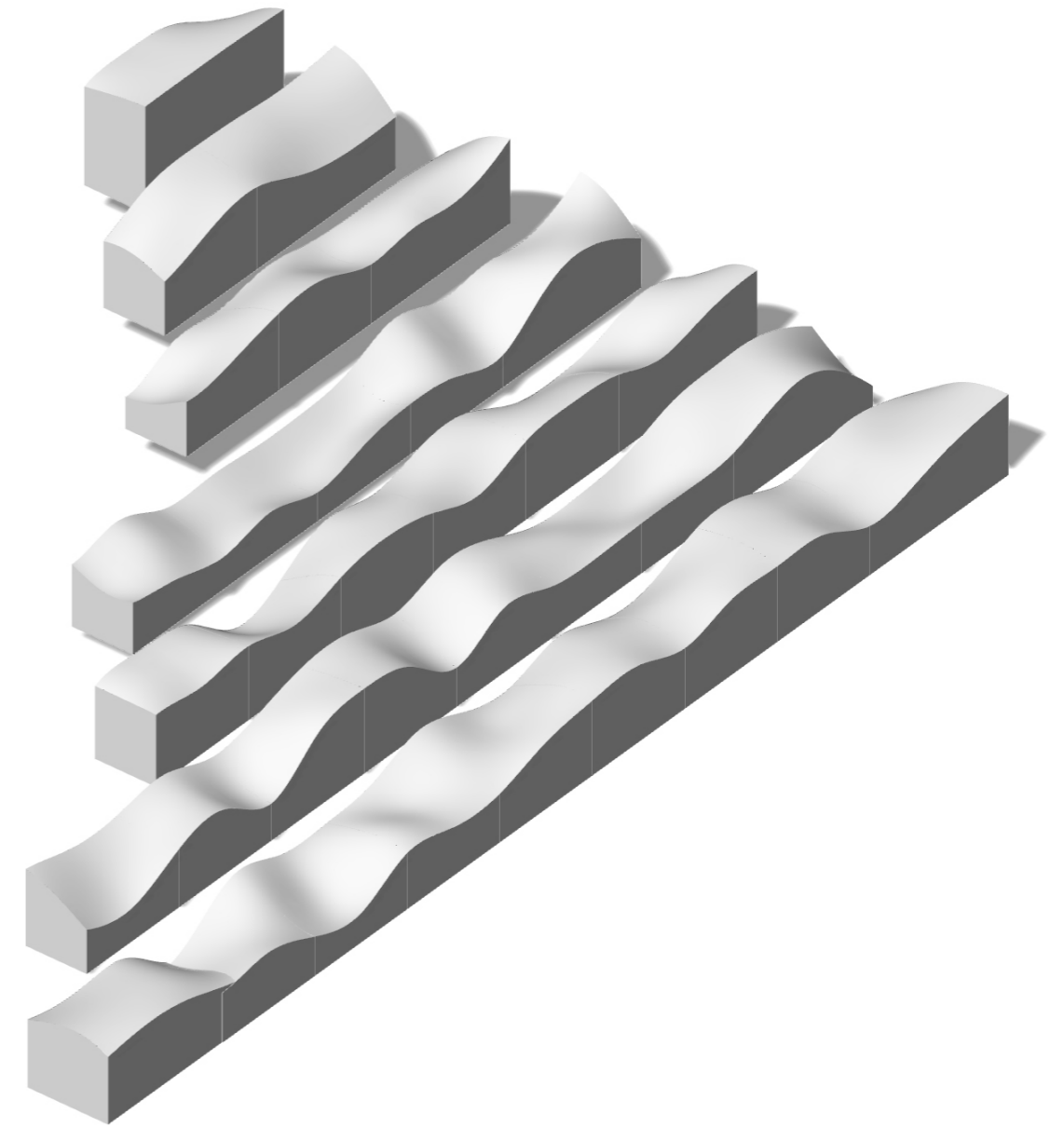
■ MODEL

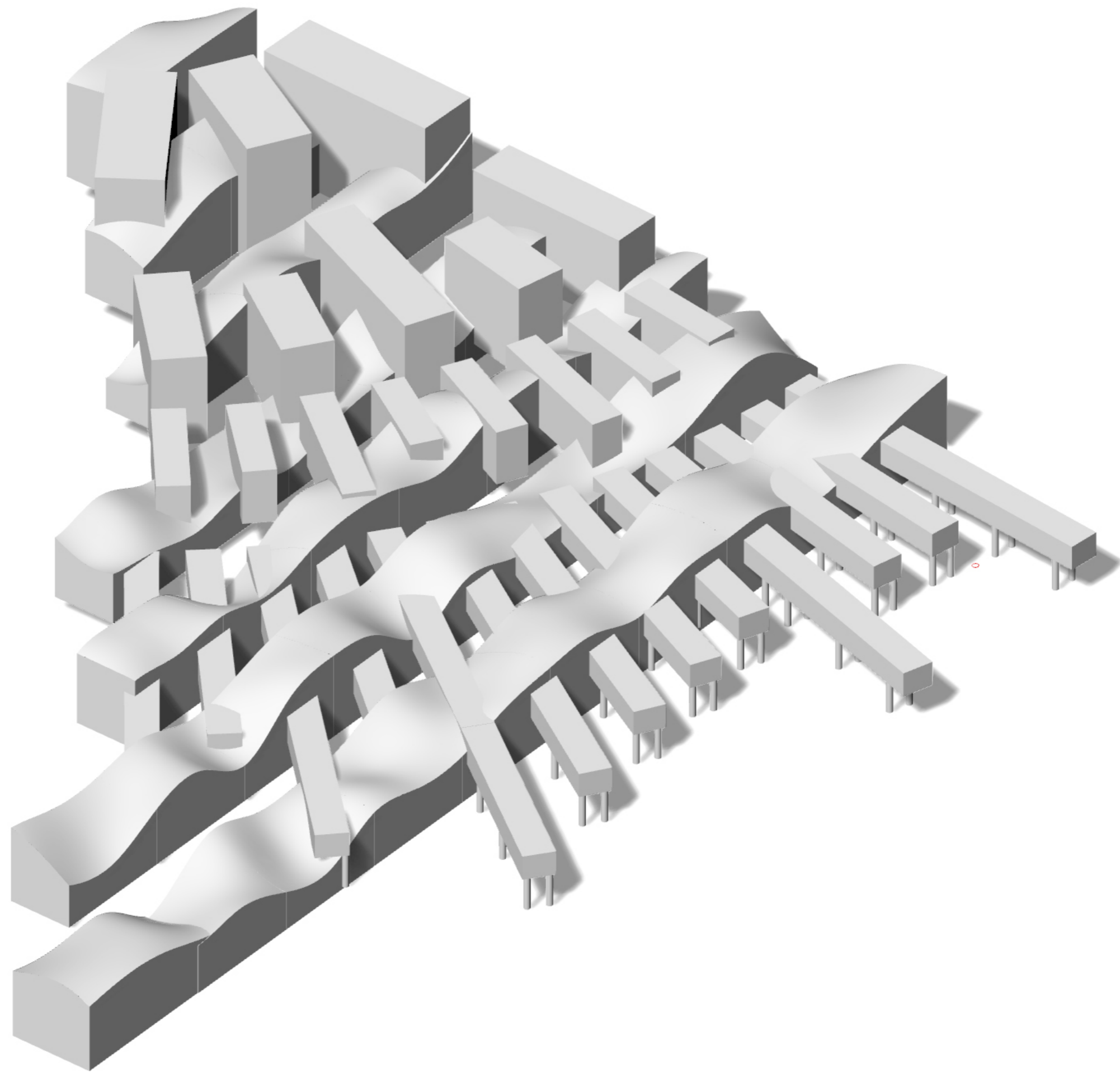


■ Collective House



■ Public Facility Complex



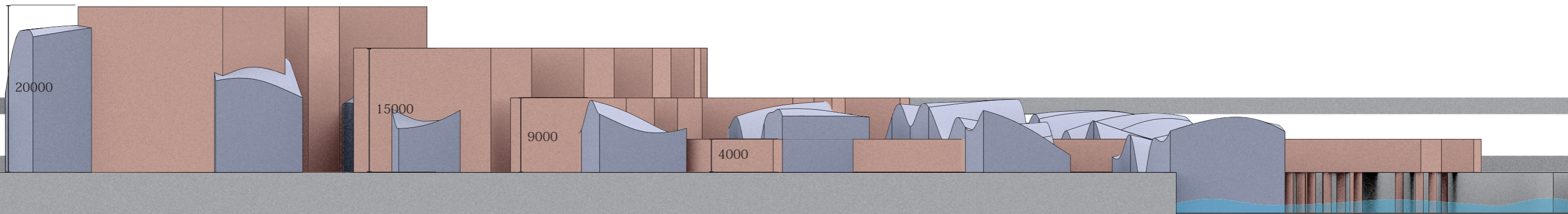


■ PLAN



- 1 Community Center
- 2 Library
- 3 Multipurpose
- 4 observation deck
- 5 Bridge
- 6 Courtyard

■ FACADE



South

■ A-A' SECTION

