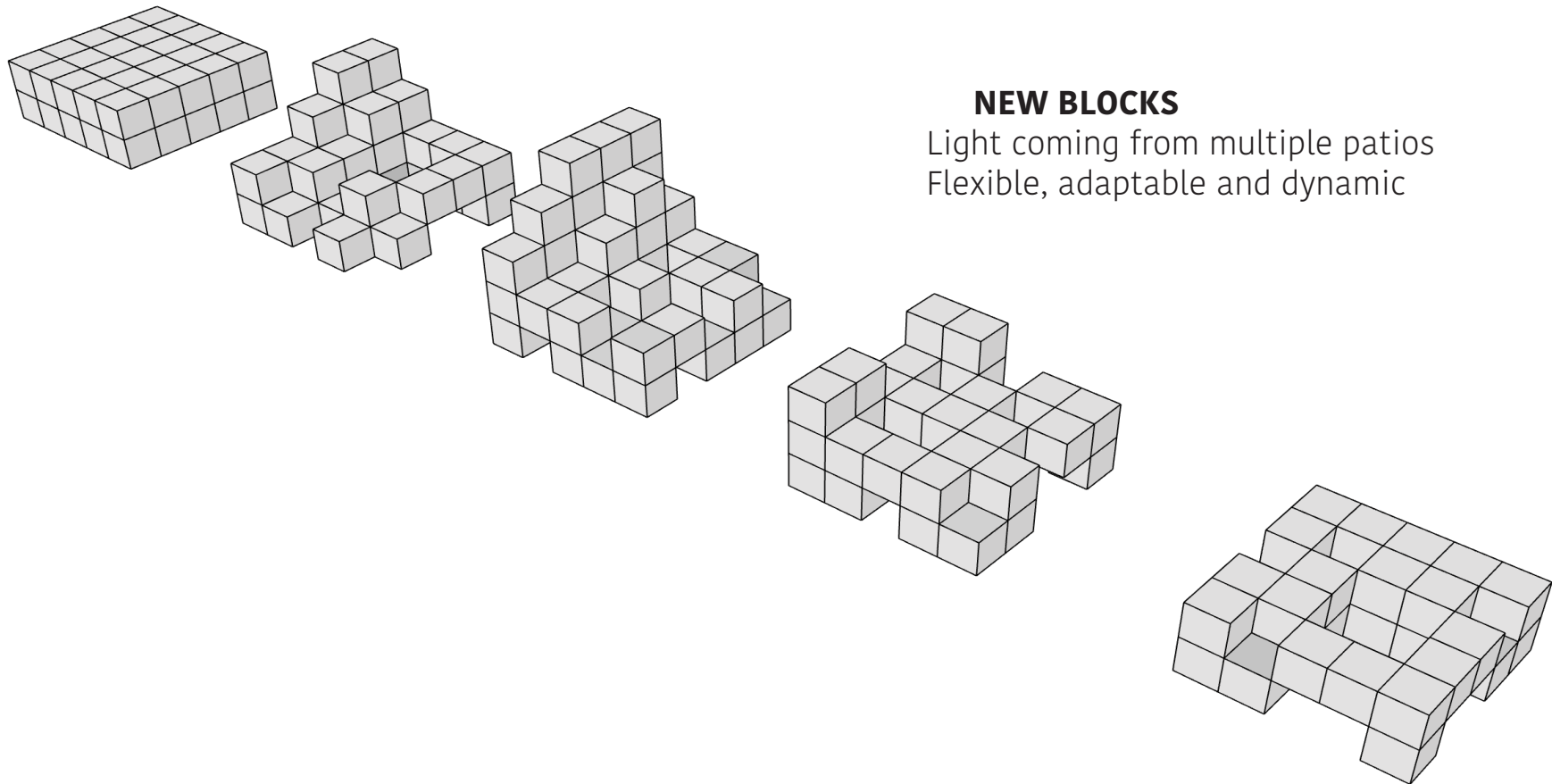
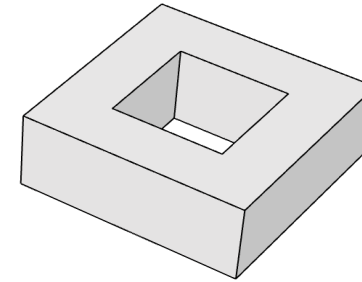
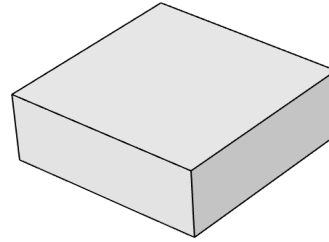


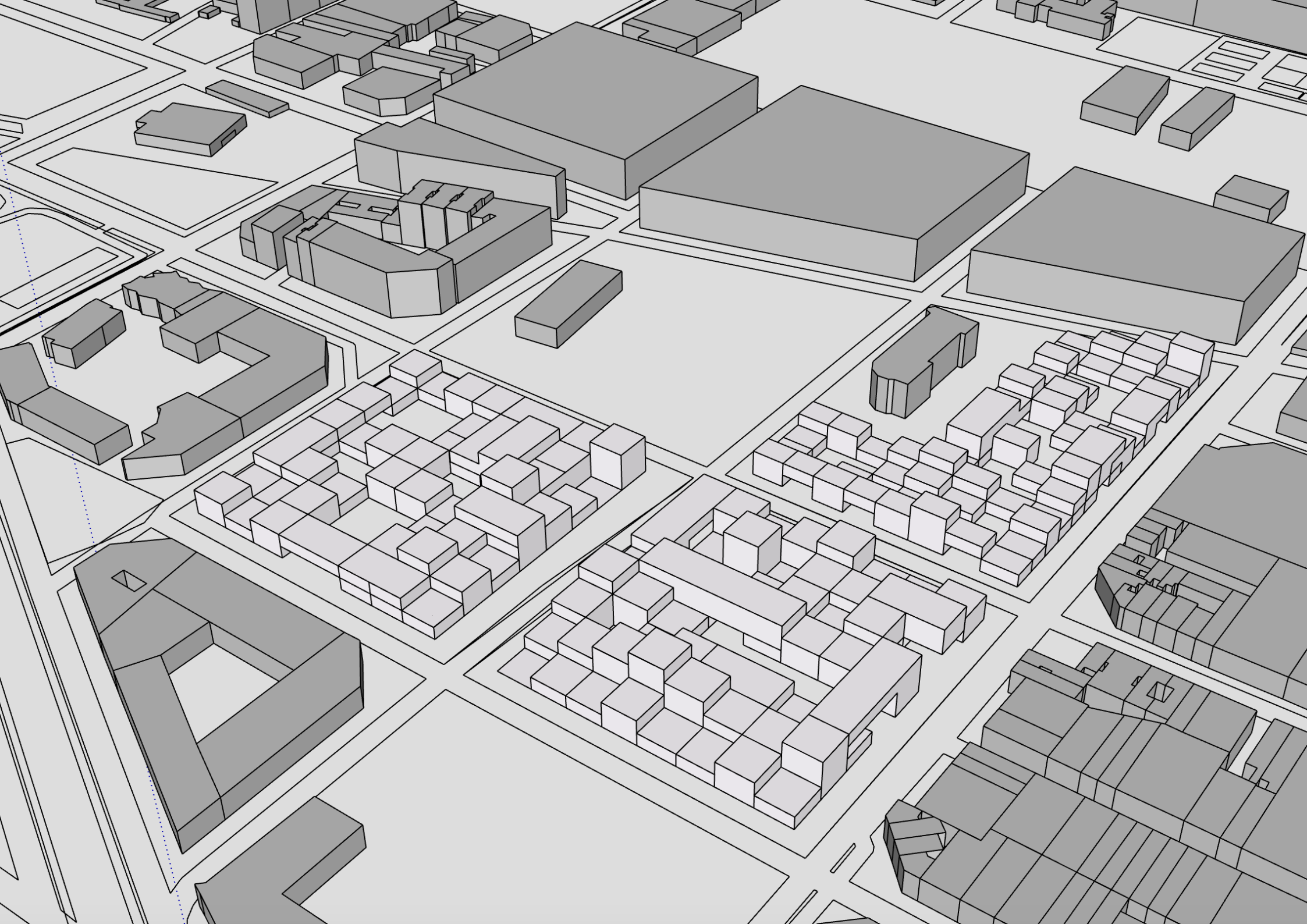
### **CERDA'S BLOCK**

Light coming from a central patio  
Full, never-changing building line



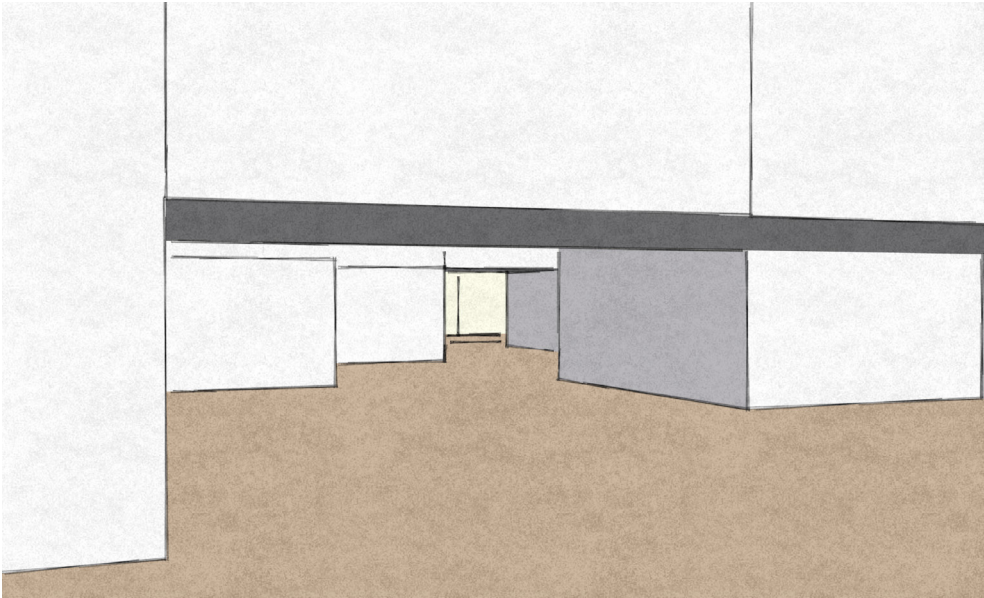
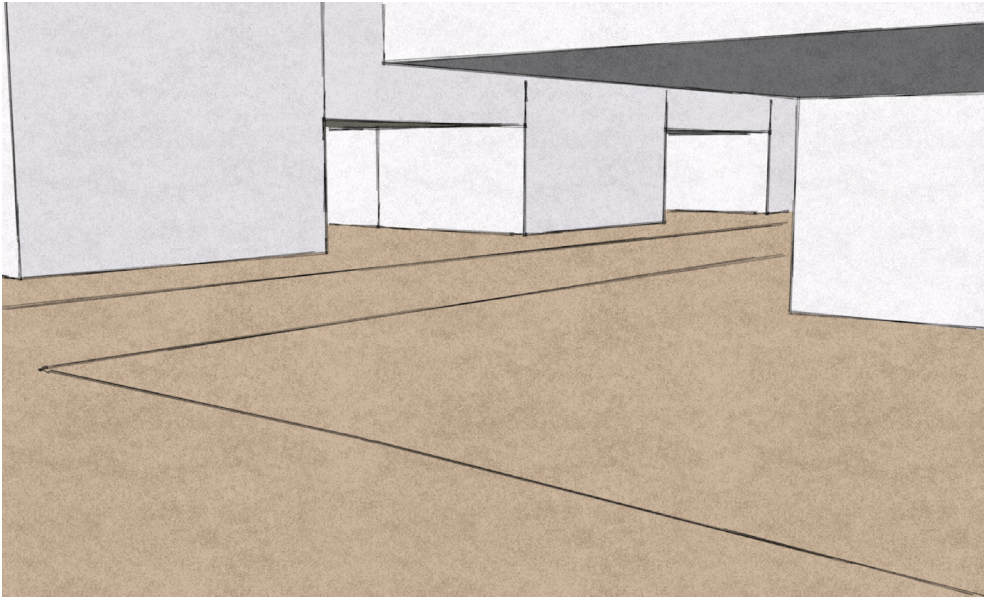
### **NEW BLOCKS**

Light coming from multiple patios  
Flexible, adaptable and dynamic

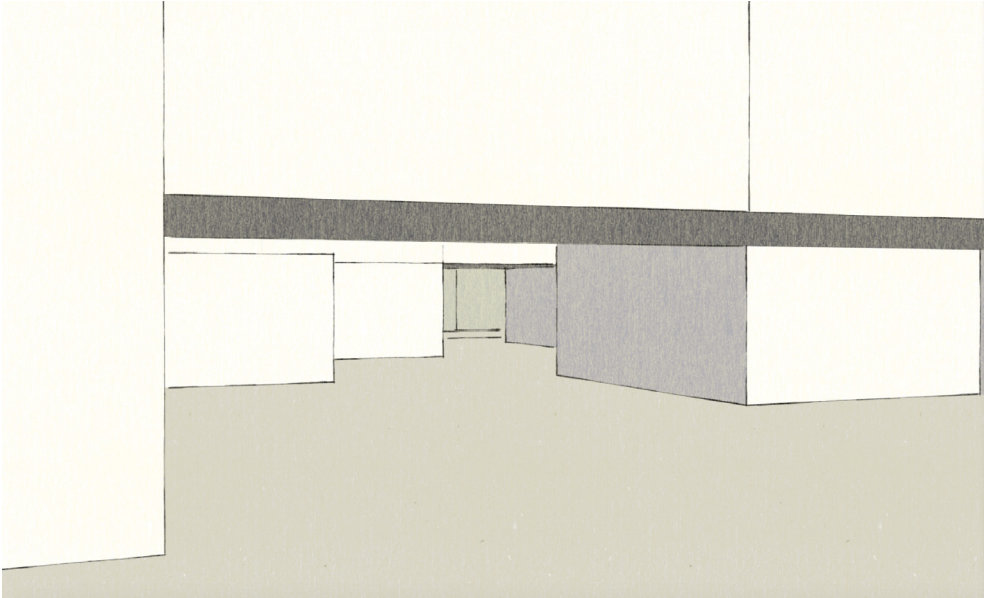
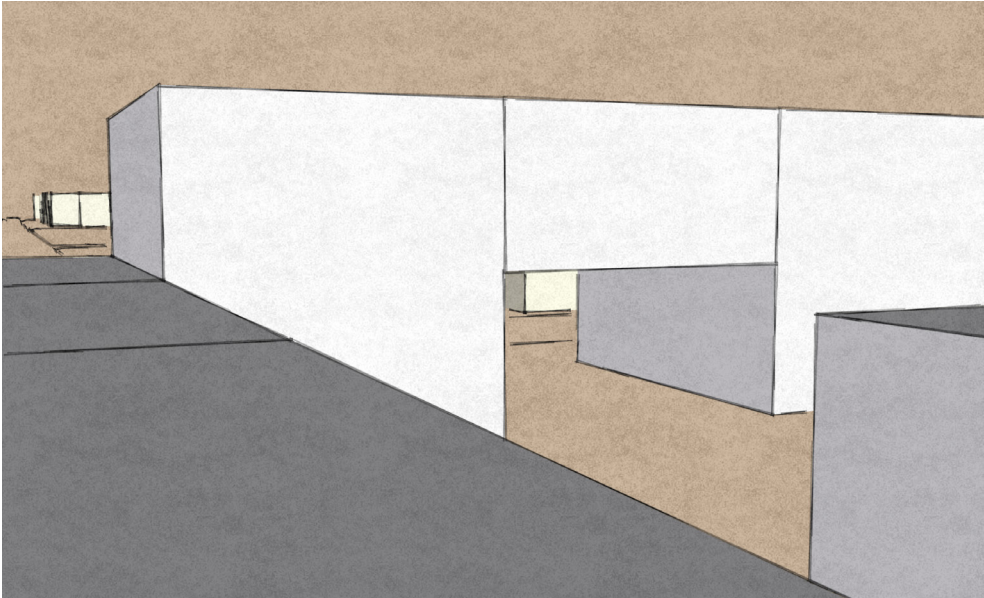




VIEW FROM THE SIDEWALK

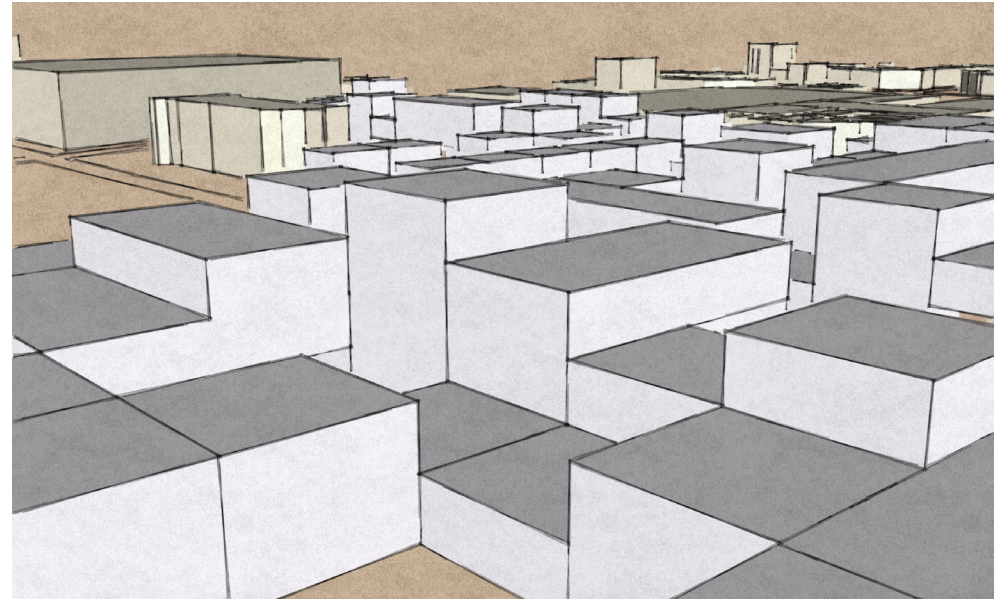
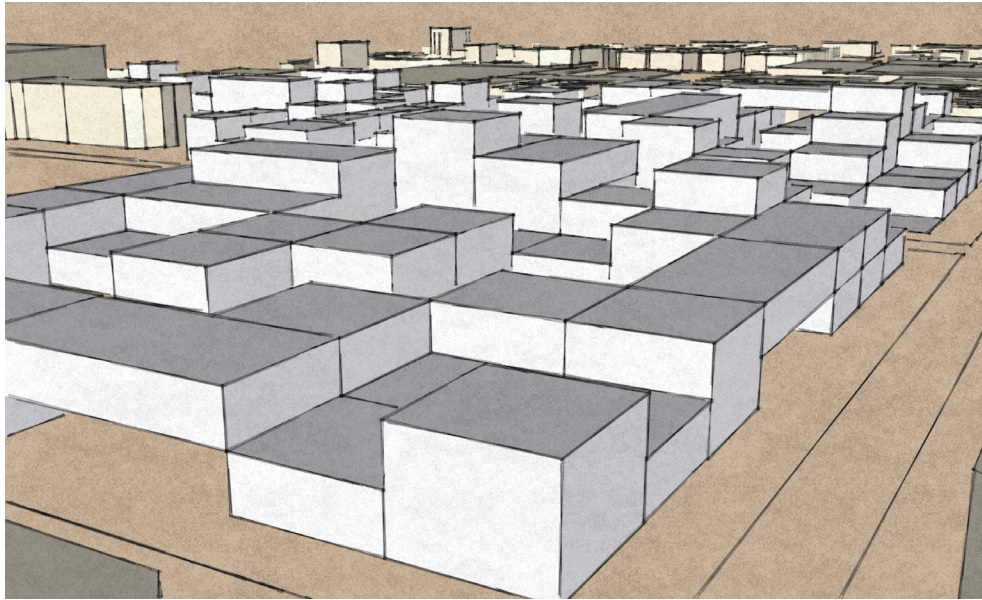


VIEW FROM THE INSIDE

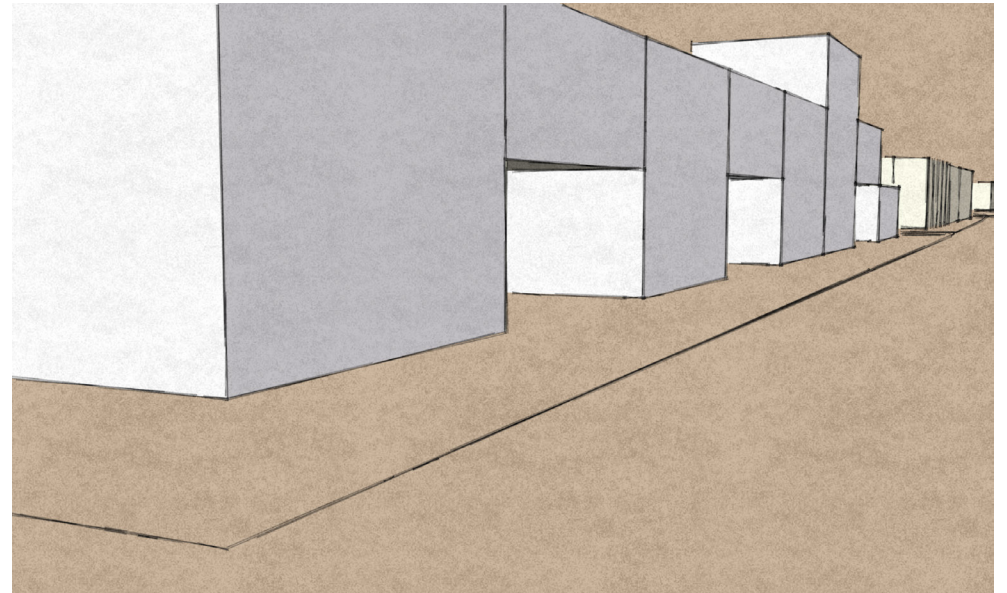
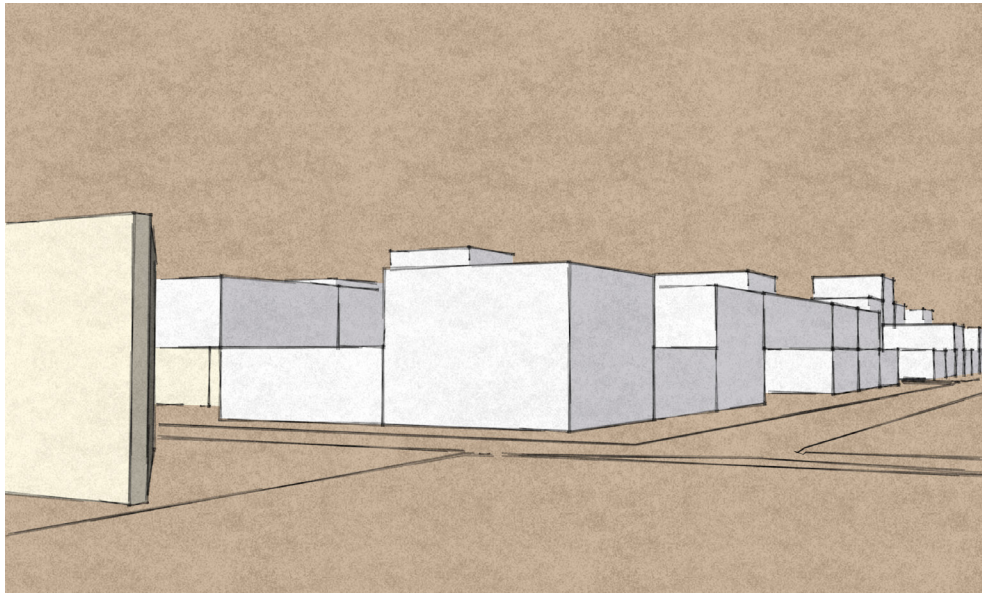




OVERALL VIEW



VIEW FROM THE STREET

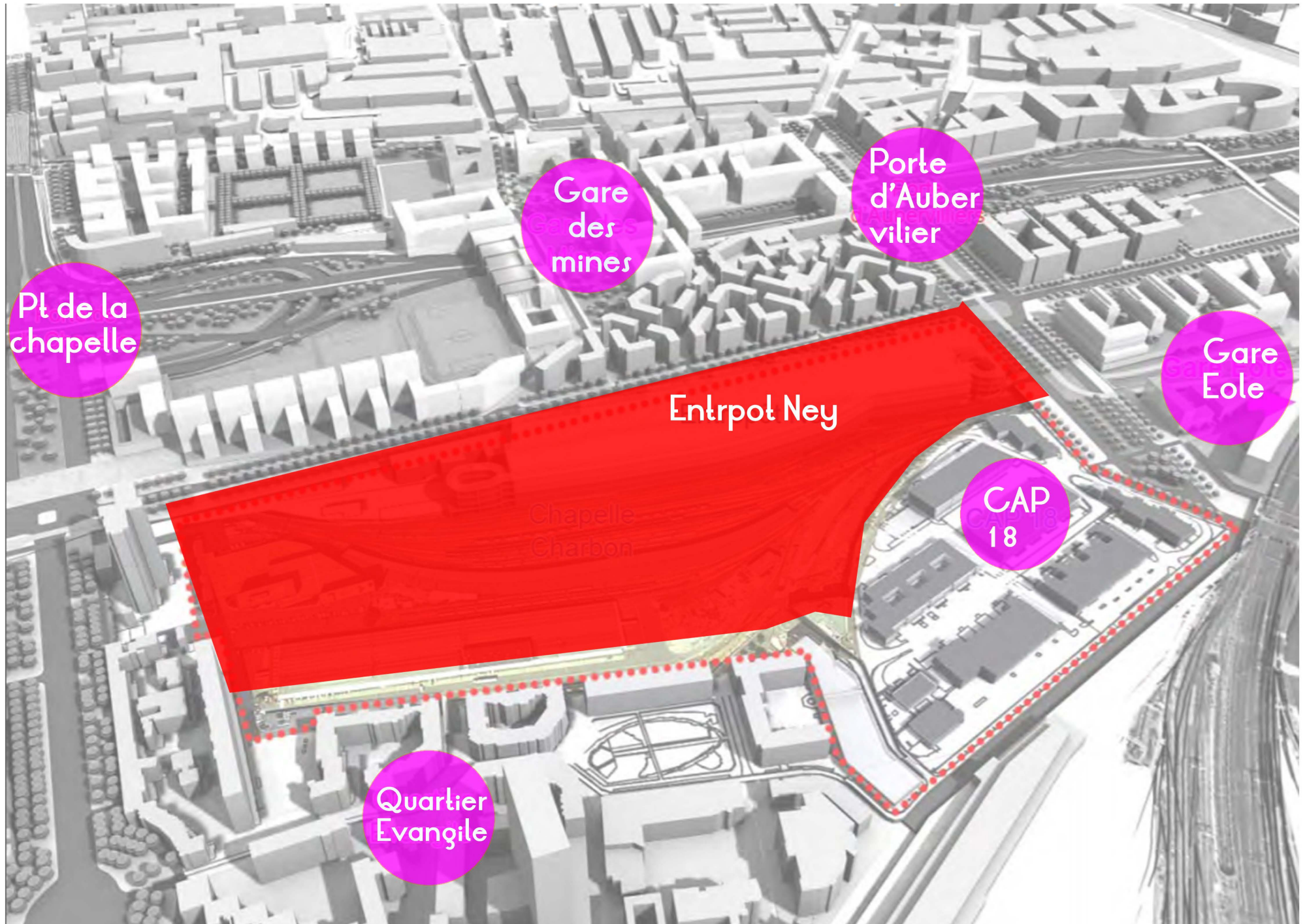


# LE CONTEXTE



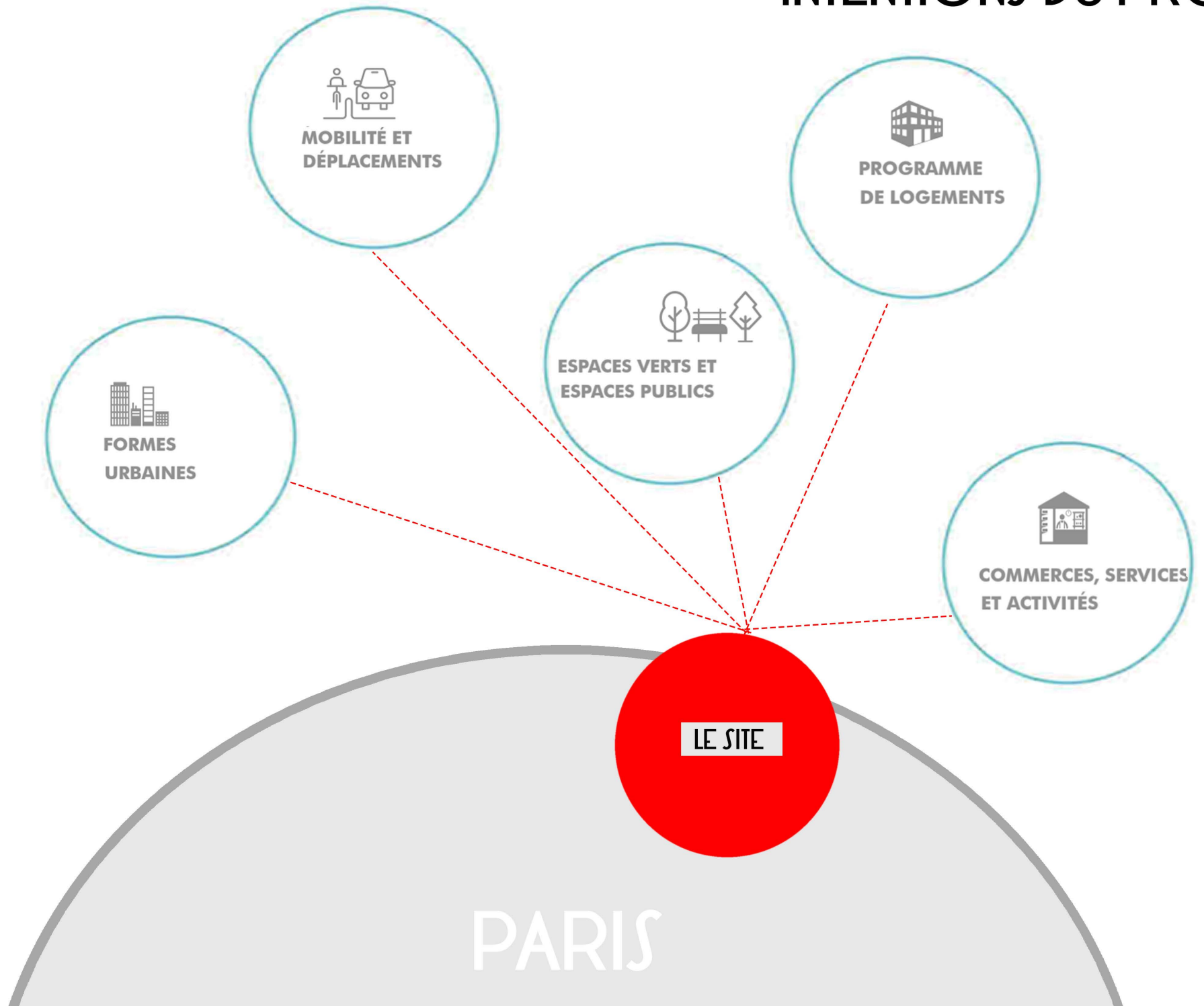


# UN SITE AU MILIEU DE DEUX PORTES DE PARIS





# INTENTIONS DU PROJET

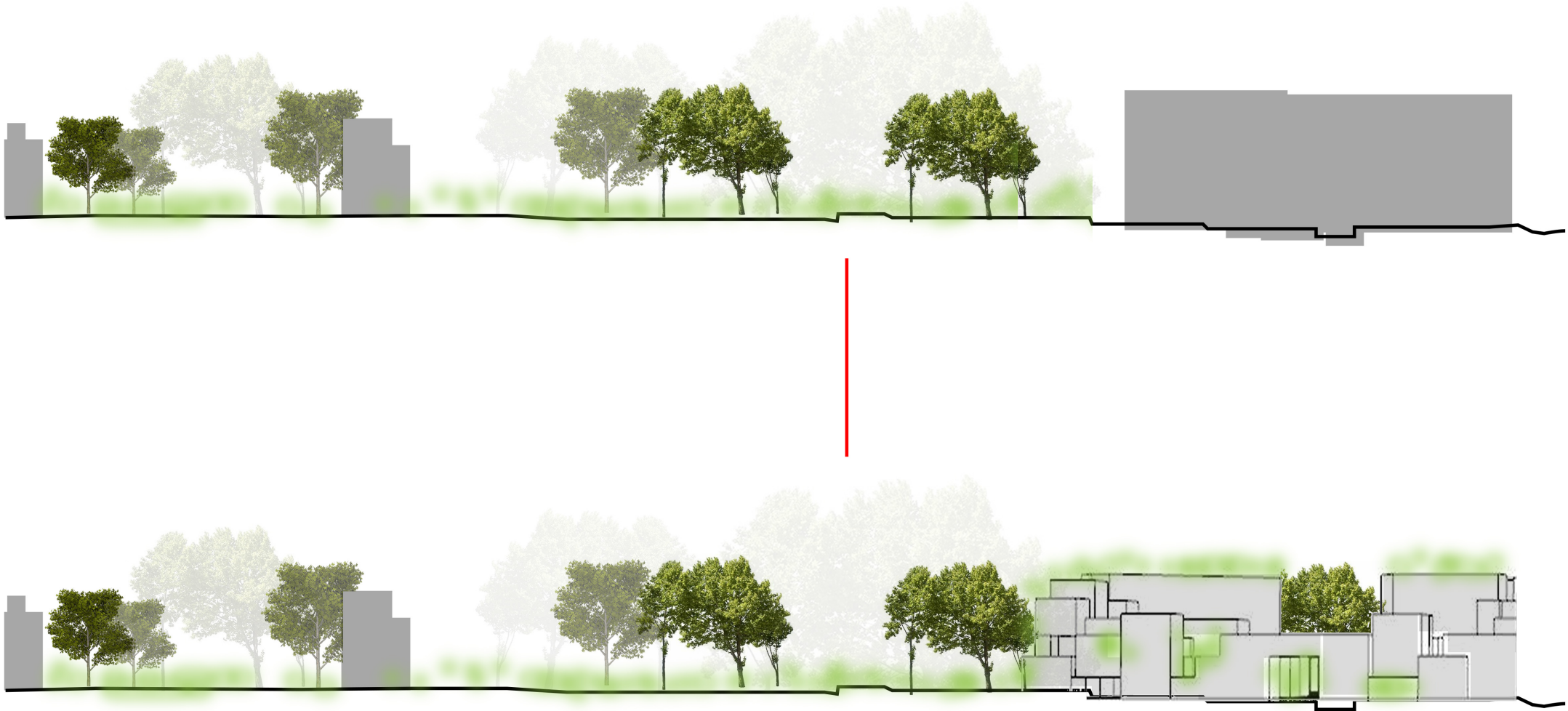


# Un programme mixte pour redynamiser le quartier





# Un projet qui s'intègre dans l'environnement tout en étant dense

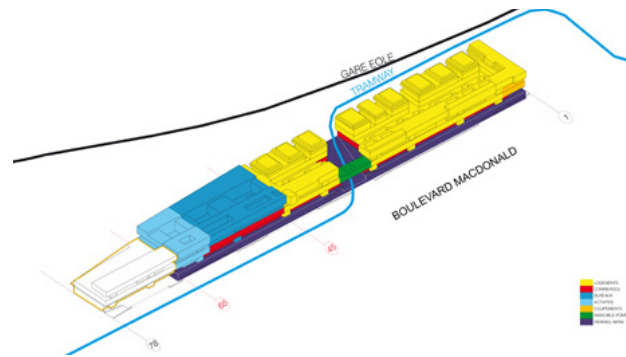


# LES ENTREPÔTS MACDONALD - PARIS 19

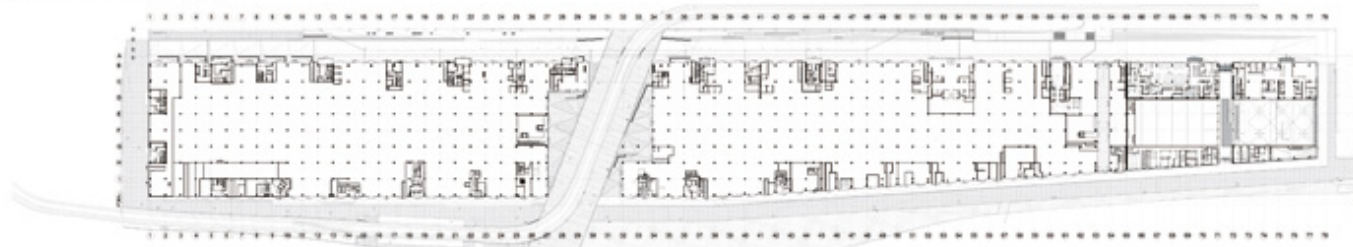
Construction d'un îlot à la place des anciens entrepôts logistiques  
Livraison : 2013

Architecte Coordinateur  
Floris Alkemade et Xaveer de Geyter Architecten  
(Masterplan par OMA (Rem Koolhaas))  
Michel Desvignes, paysagiste  
Maîtrise d'ouvrage - SAS ParisNordEST (Caisse des Dépôts, Icade, Semavip)  
Aménageur - SEMAVIP

Programme  
Surface globale : 165 000 m<sup>2</sup> (610 m façade totale)  
Logements : 71 300 m<sup>2</sup>  
Bureaux : 28 000 m<sup>2</sup>  
Commerces : 32 500 m<sup>2</sup>  
Activités : 16 000 m<sup>2</sup>  
Equipements publics (école, collège, crèche, gymnase) : 17 000 m<sup>2</sup>



Plan du rez-de-chaussée



Plan du quatrième étage





# VUE EN PLAN



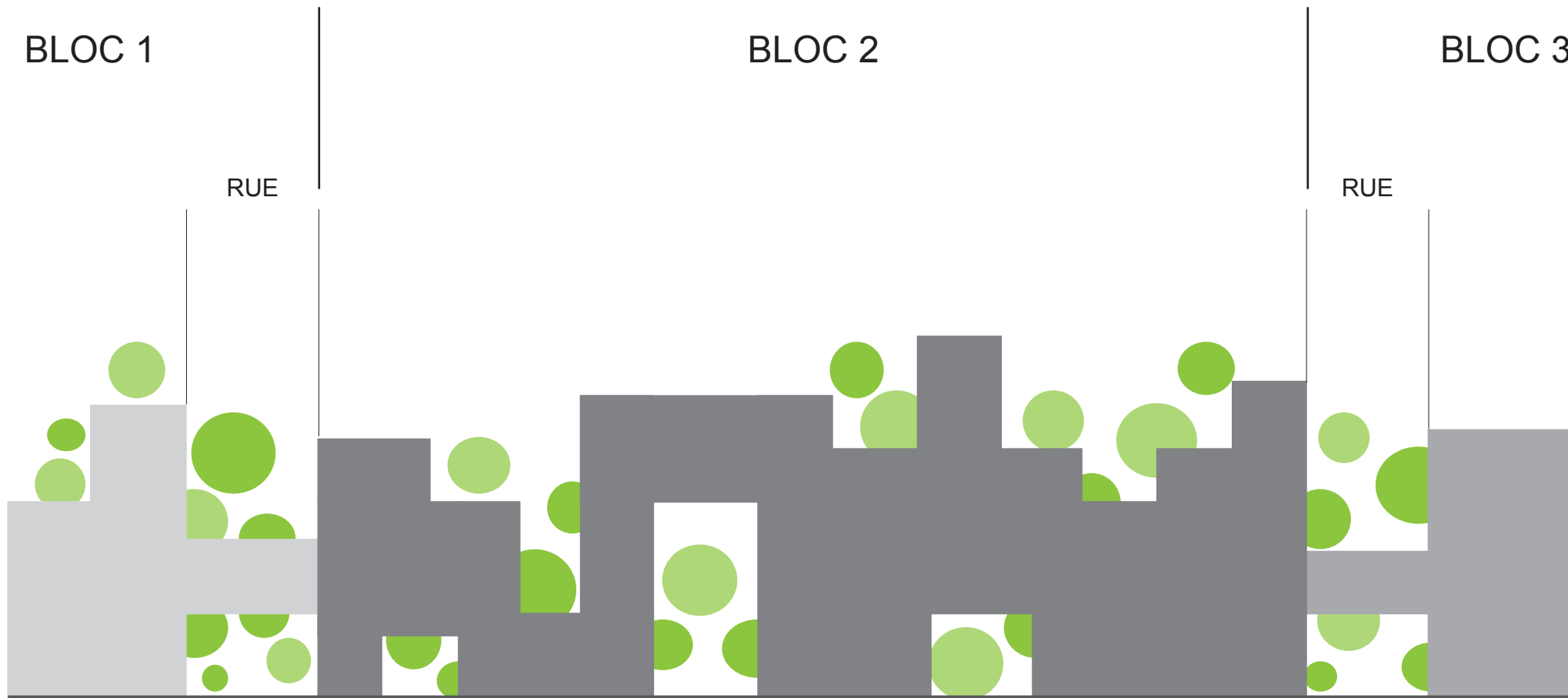
BLOC 1

BLOC 2

BLOC 3

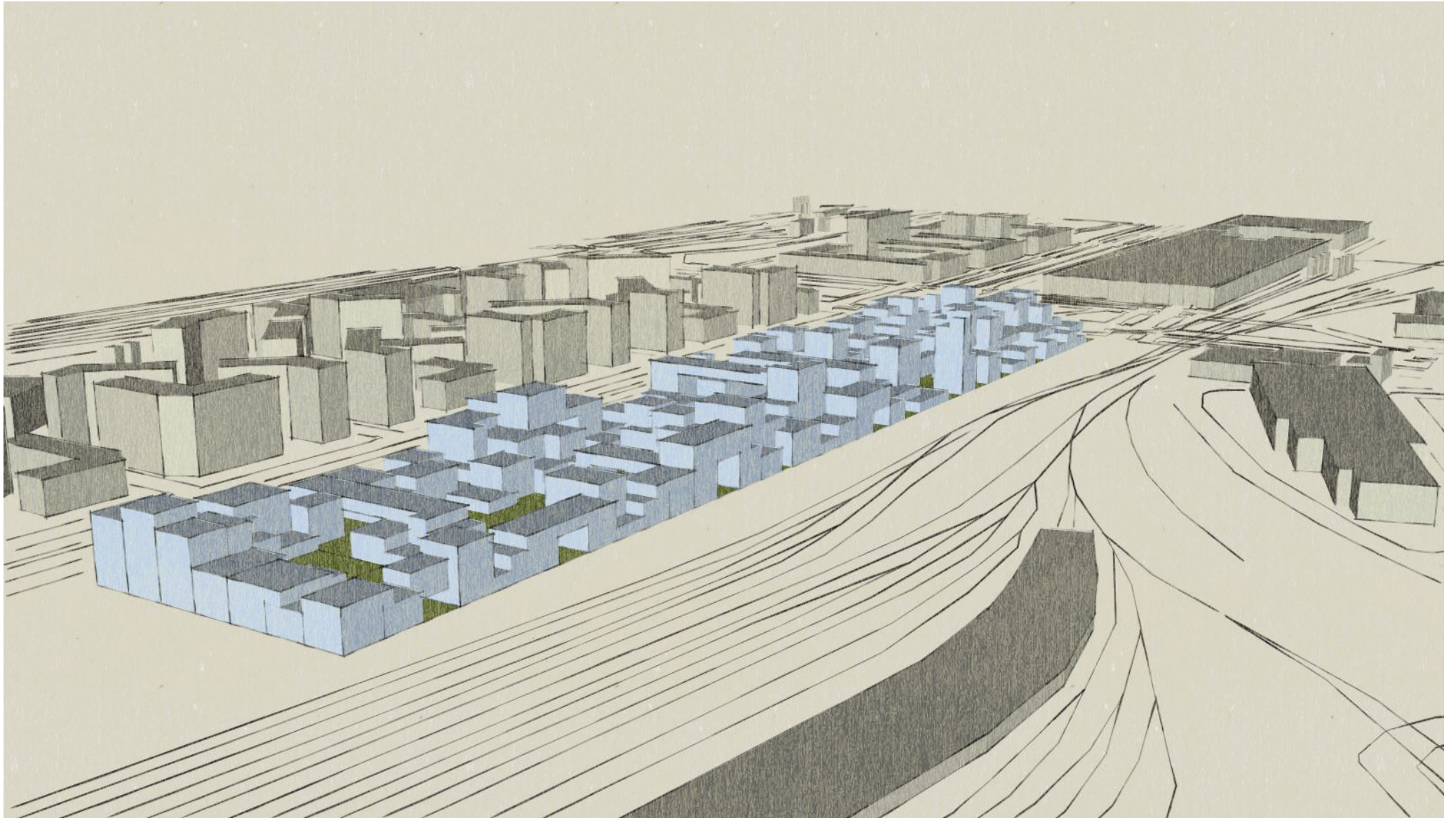
RUE

RUE

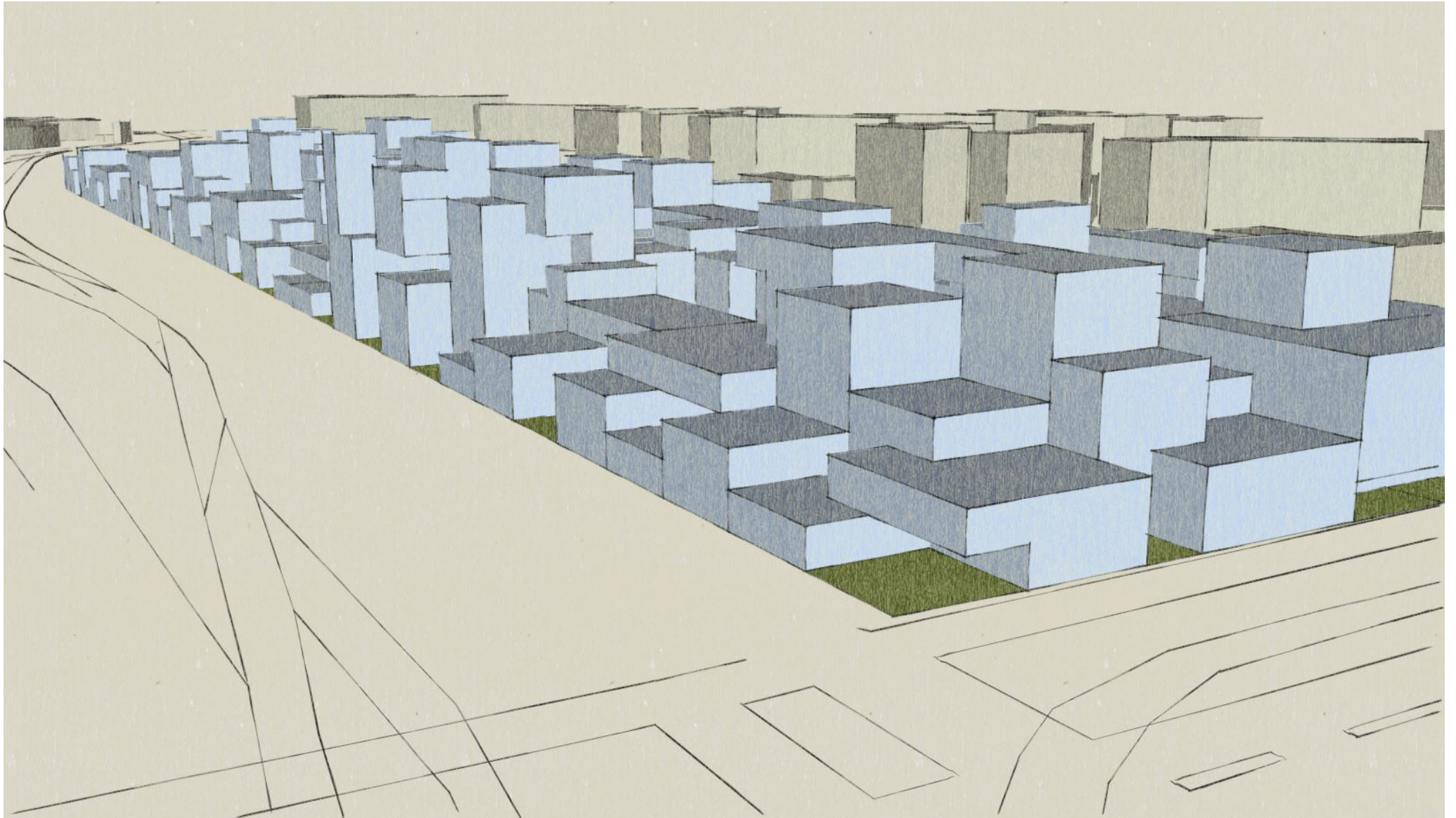




# VUE GLOBALE

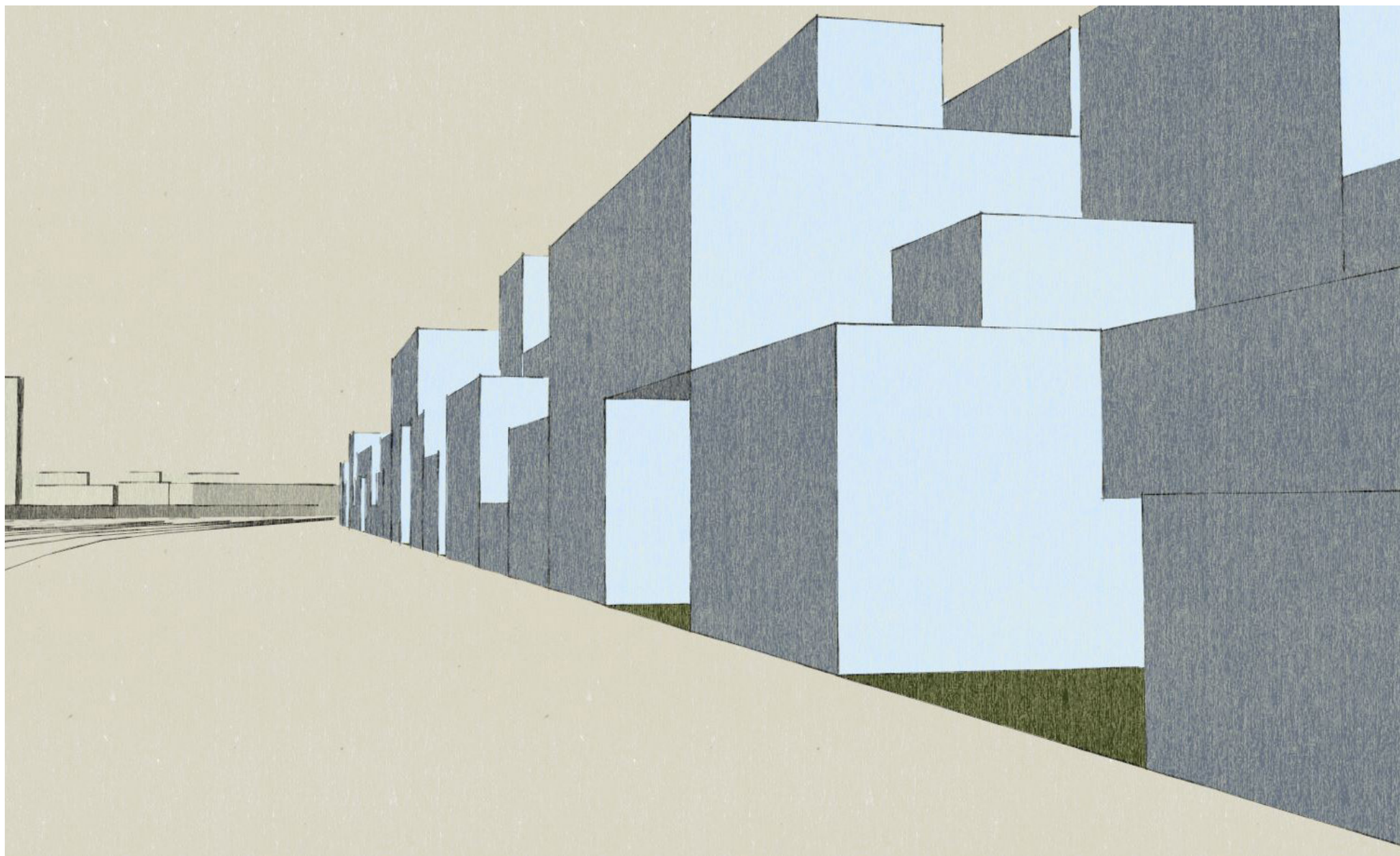


# VUE GLOBALE





# VUE DEPUIS LES RAILS



# VUE SUR LA RUELE





# VUE SUR LA RUELLE





## VUE SUR UN PATIO

