

ECOTONE

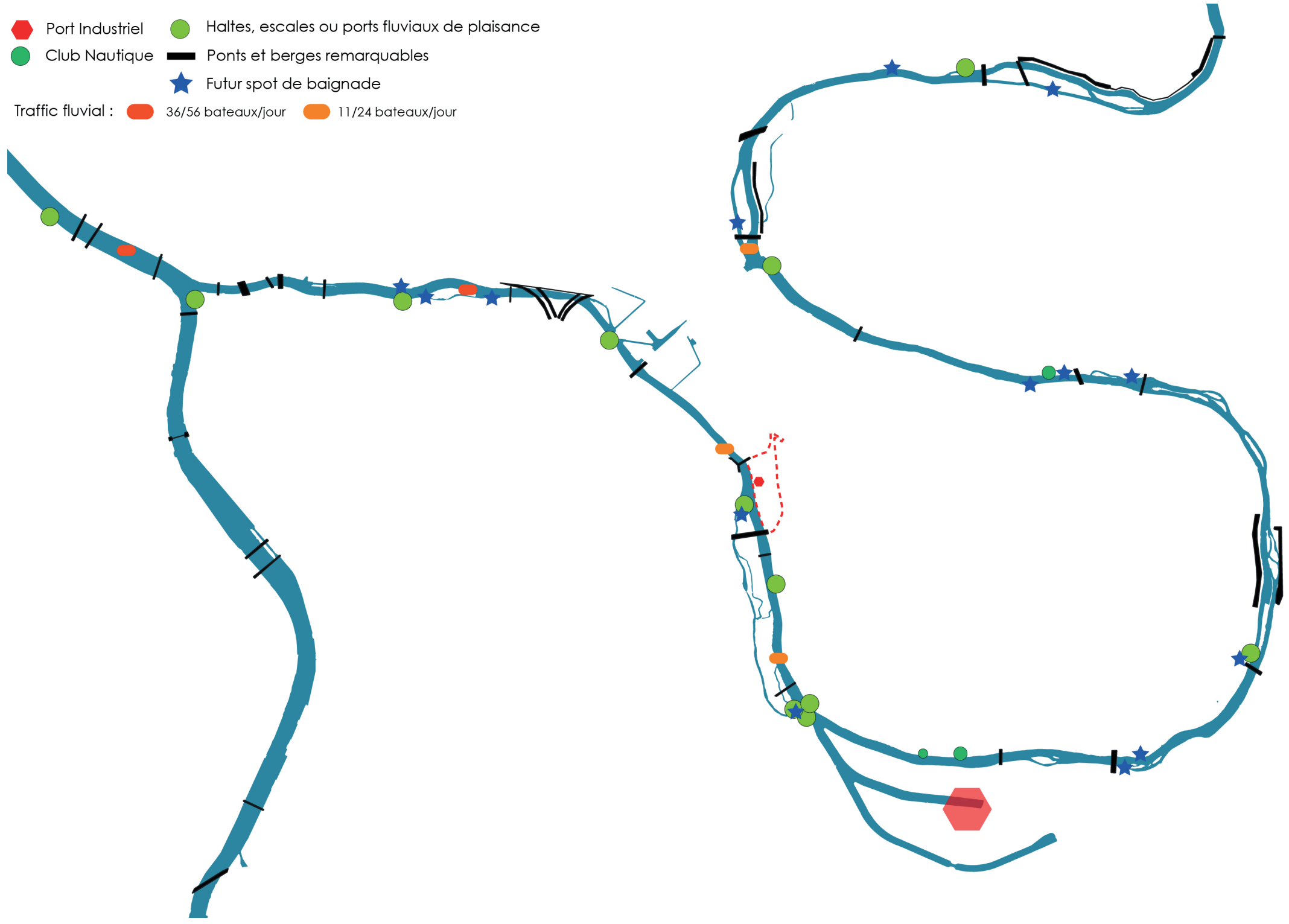
SITUATIONS

GRAND PARIS EXPRESS

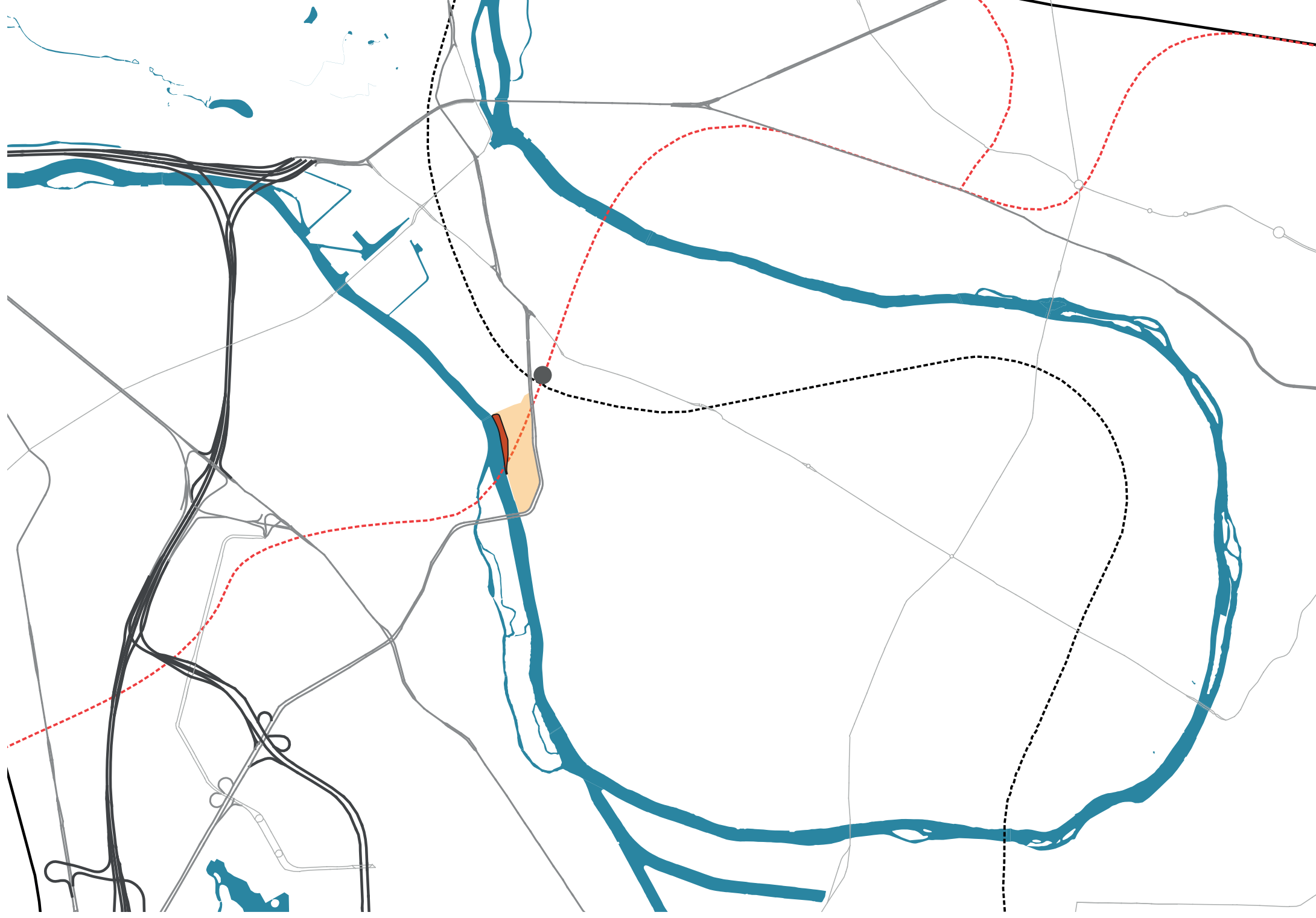


LA MARNE

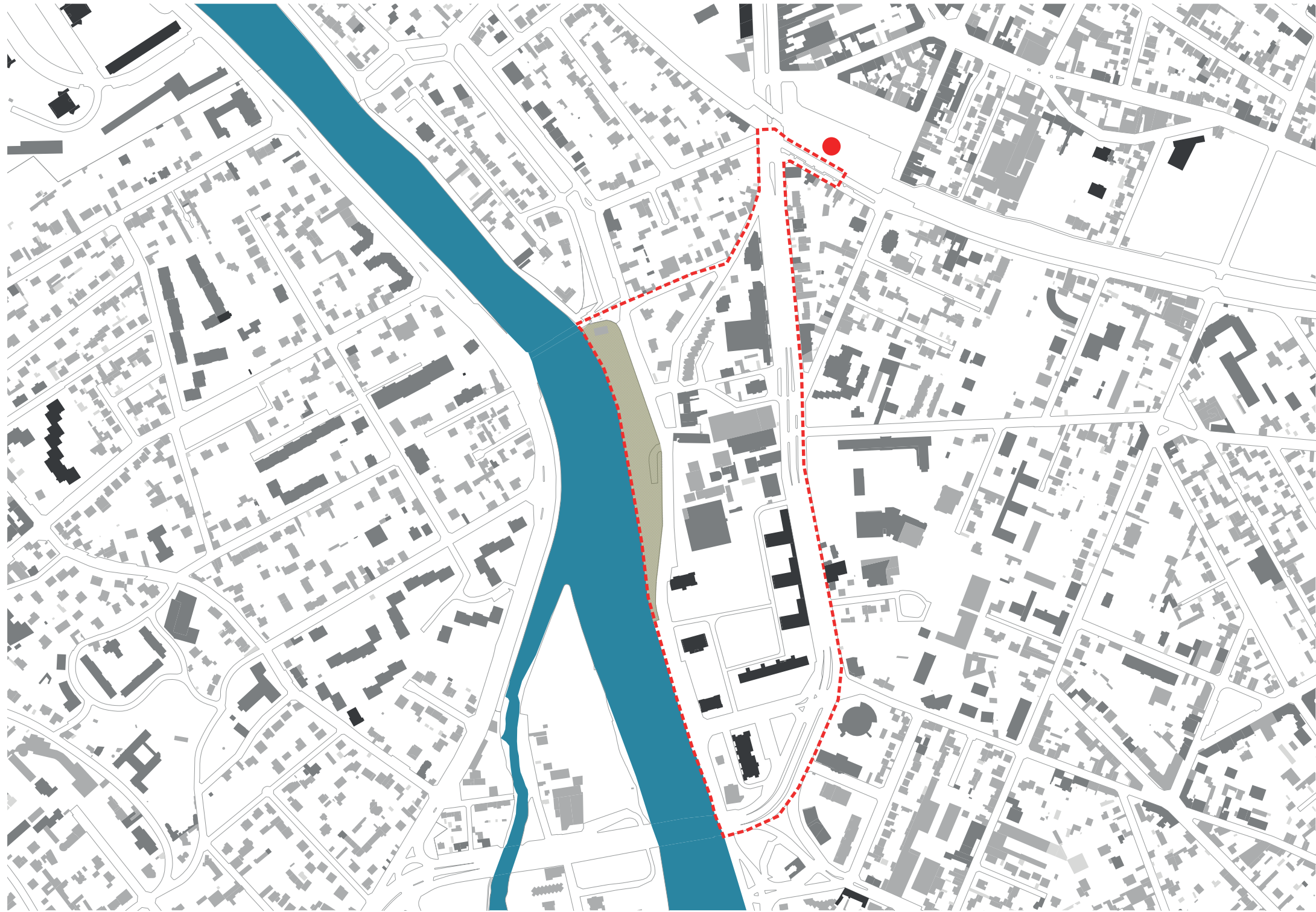
- Port Industriel
- Haltes, escales ou ports fluviaux de plaisance
- Club Nautique
- Ponts et berges remarquables
- ★ Futur spot de baignade
- Traffic fluvial : ● 34/54 bateaux/jour
- 11/24 bateaux/jour



SAINT-MAUR-DES-FOSSÉS



QUARTIER SAINT-MAUR-CRETEIL



LE SITE

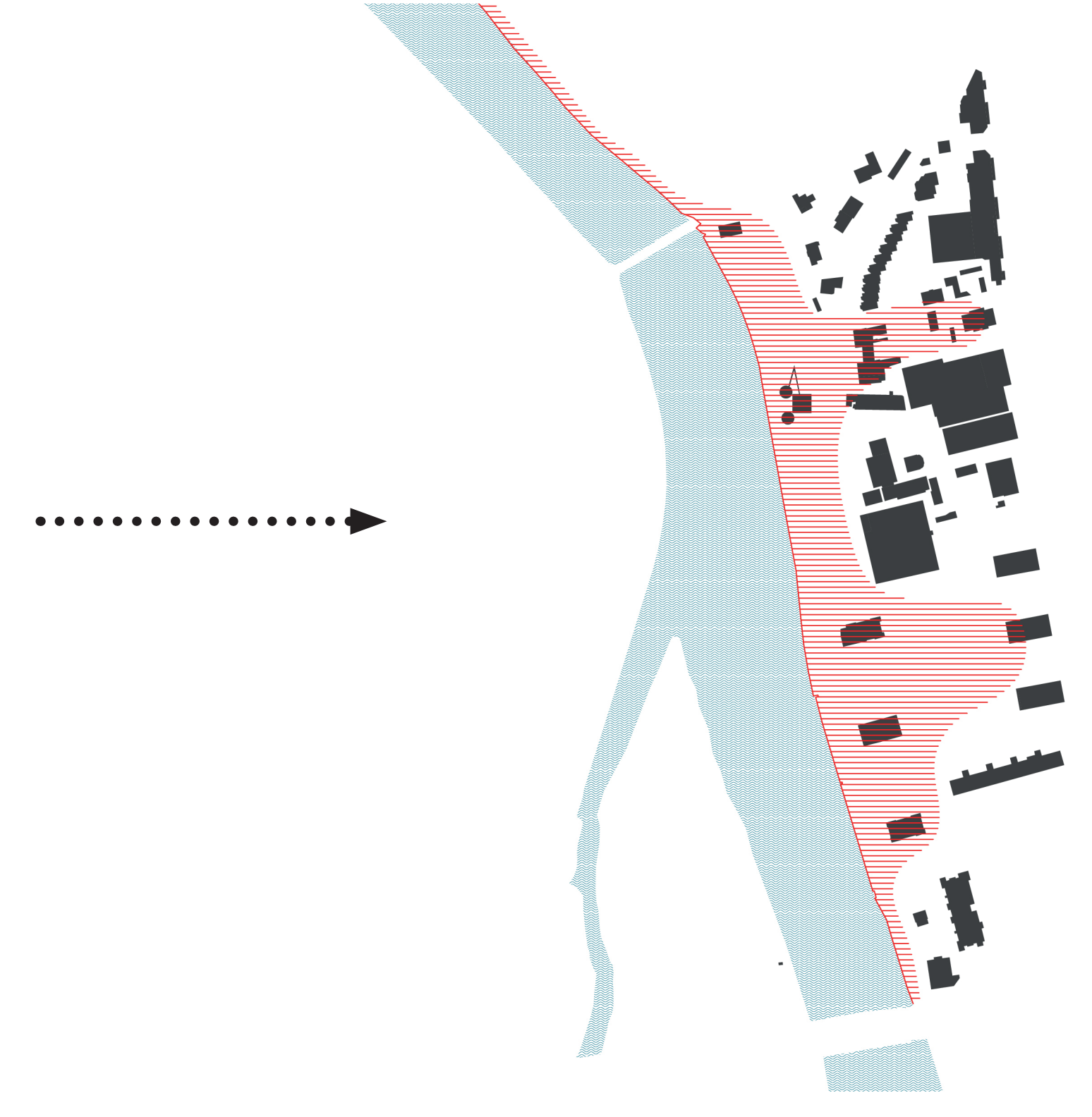
LA MARNE

INONDATIONS

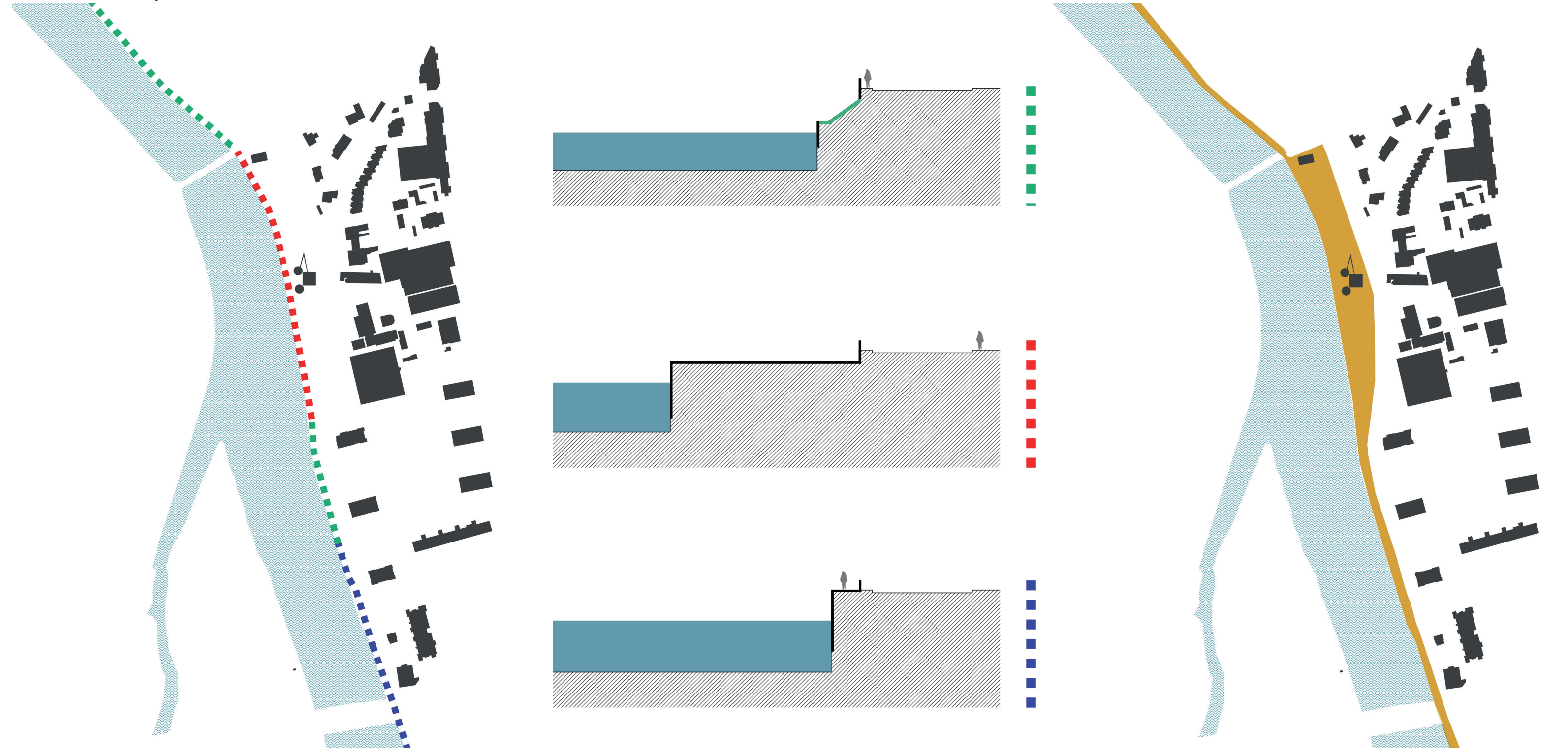
Submersion entre 1 et 2m
Submersion supérieure à 2m



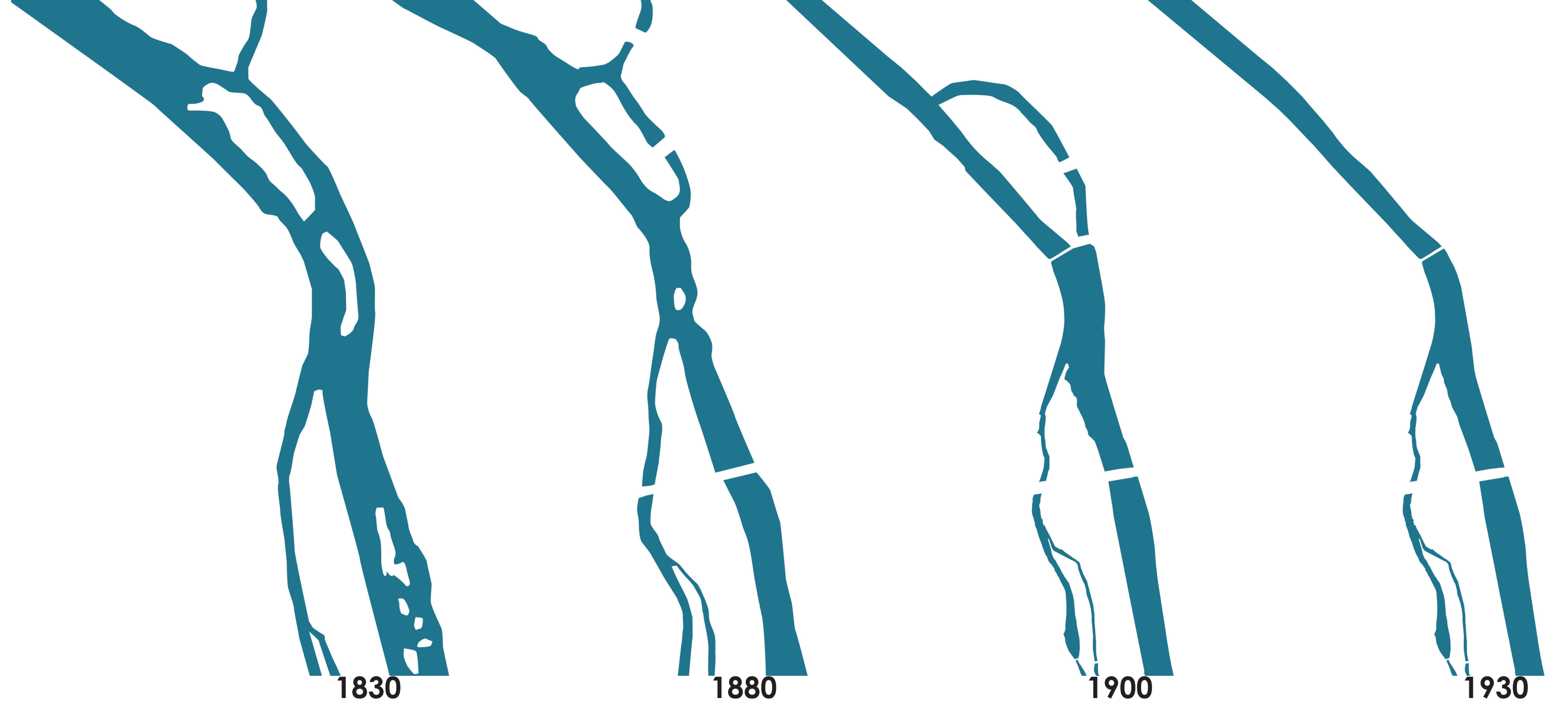
INFLUENCES



LA BERGE, CONTINUITÉ ET PERMÉABILITÉ

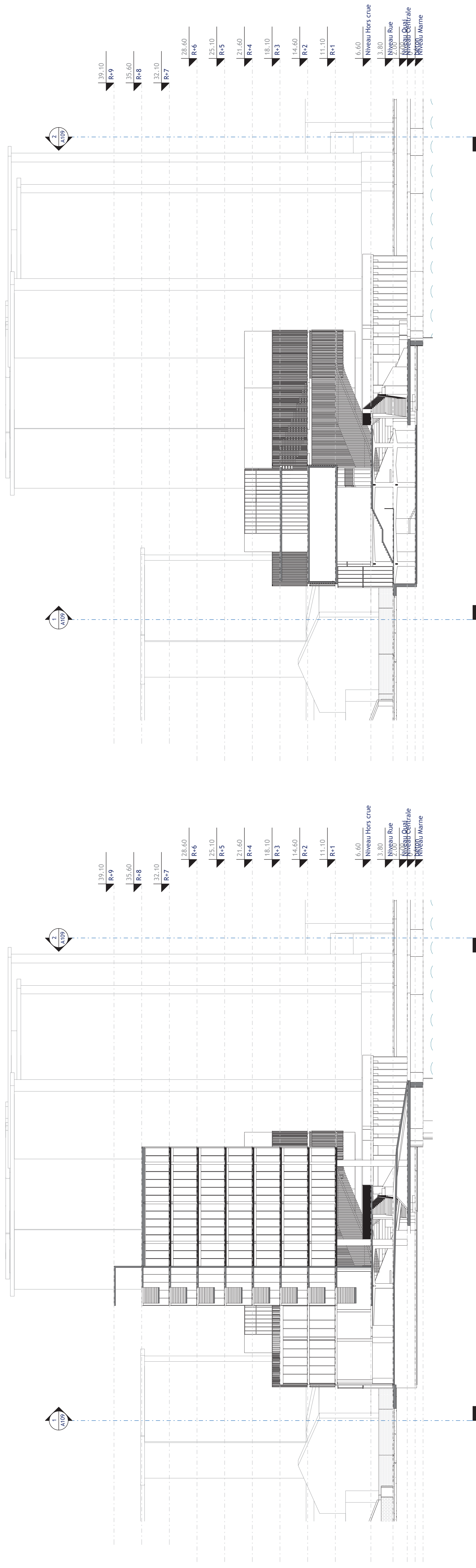


EVOLUTION DU LIT



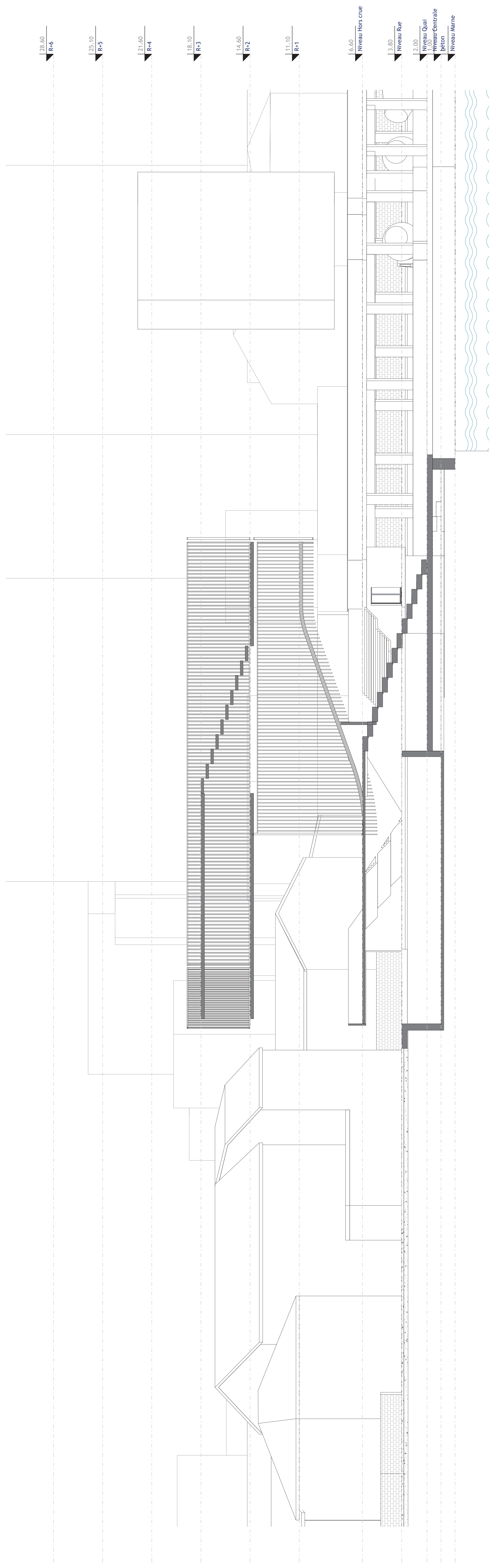
SEQUENCES, ATTRACTIVITÉ, TRANSVERSALITÉ

COUPES 1.200



1 Coupe Tour
Ech. : 1:200

2 Coupe sur commerce
Ech. : 1:200



3 Coupe sur Amphit
Ech. : 1:100

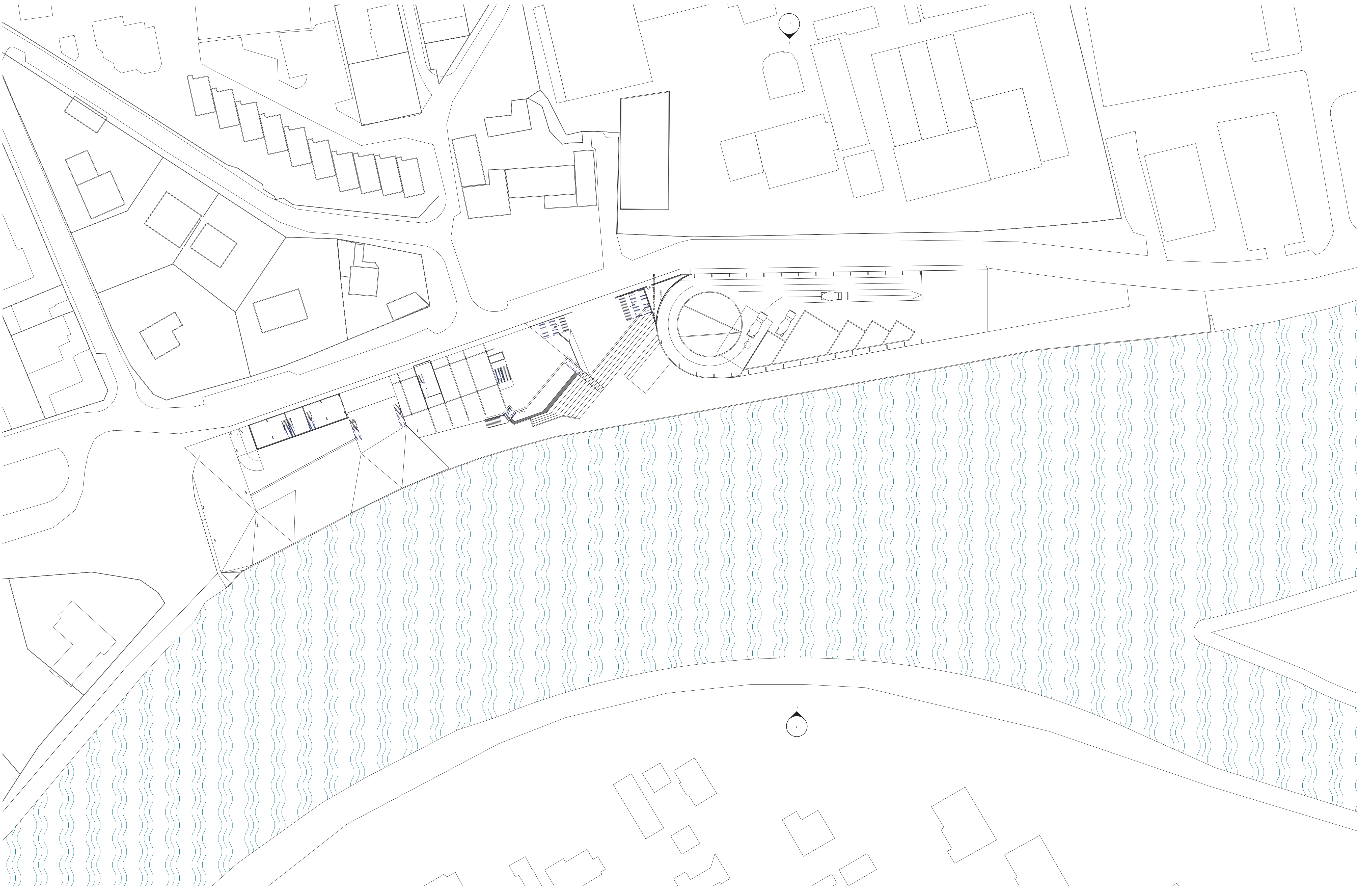
PLAN NIVEAU R+1 / R+2 1.500



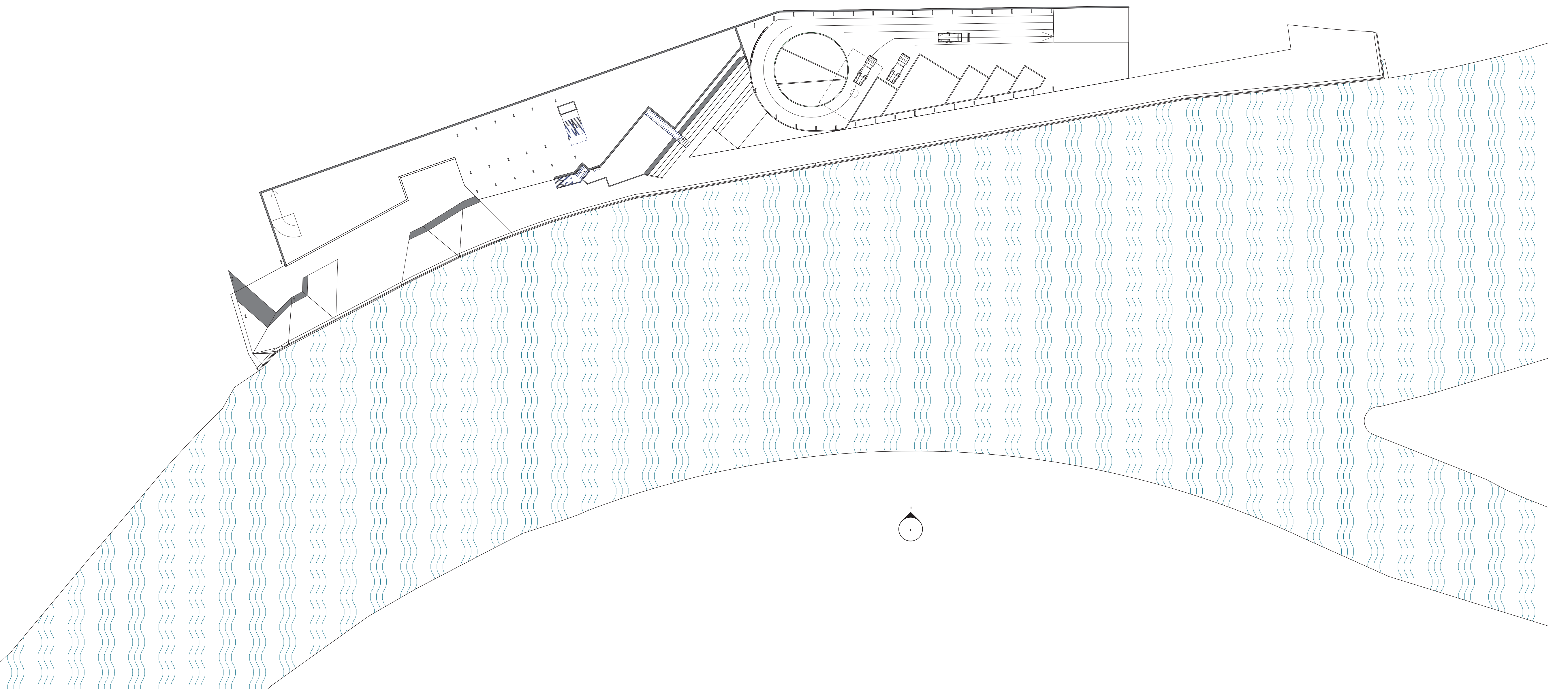
PLAN NIVEAU DECK 1.500



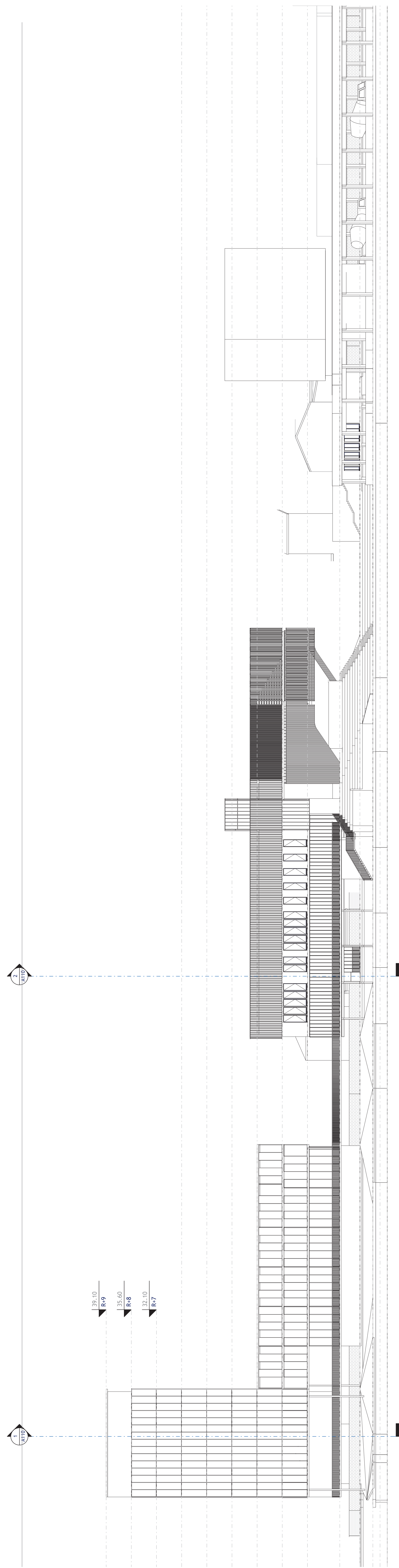
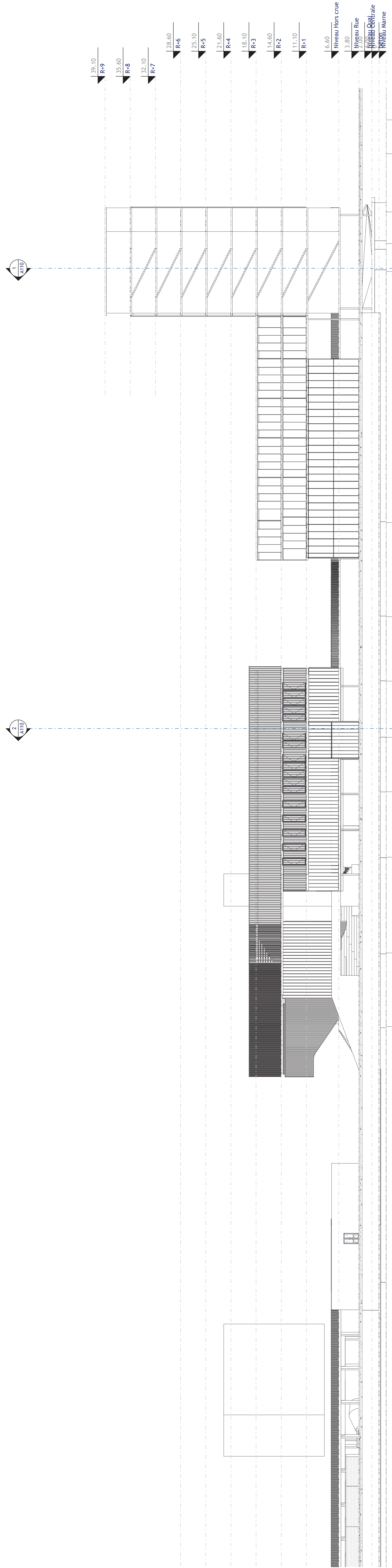
PLAN NIVEAU RUE 1.500

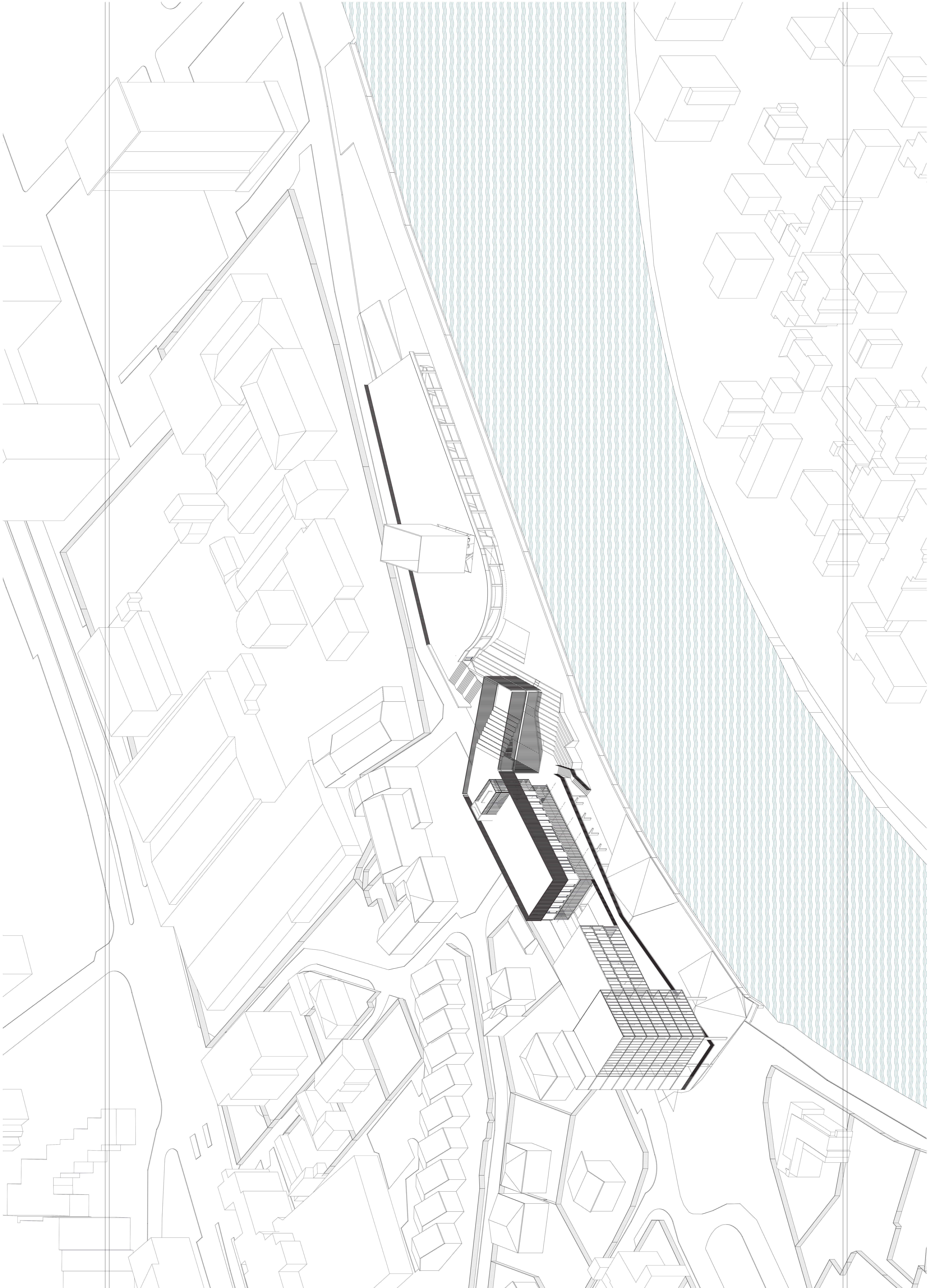


PLAN NIVEAU QUAI 1.500

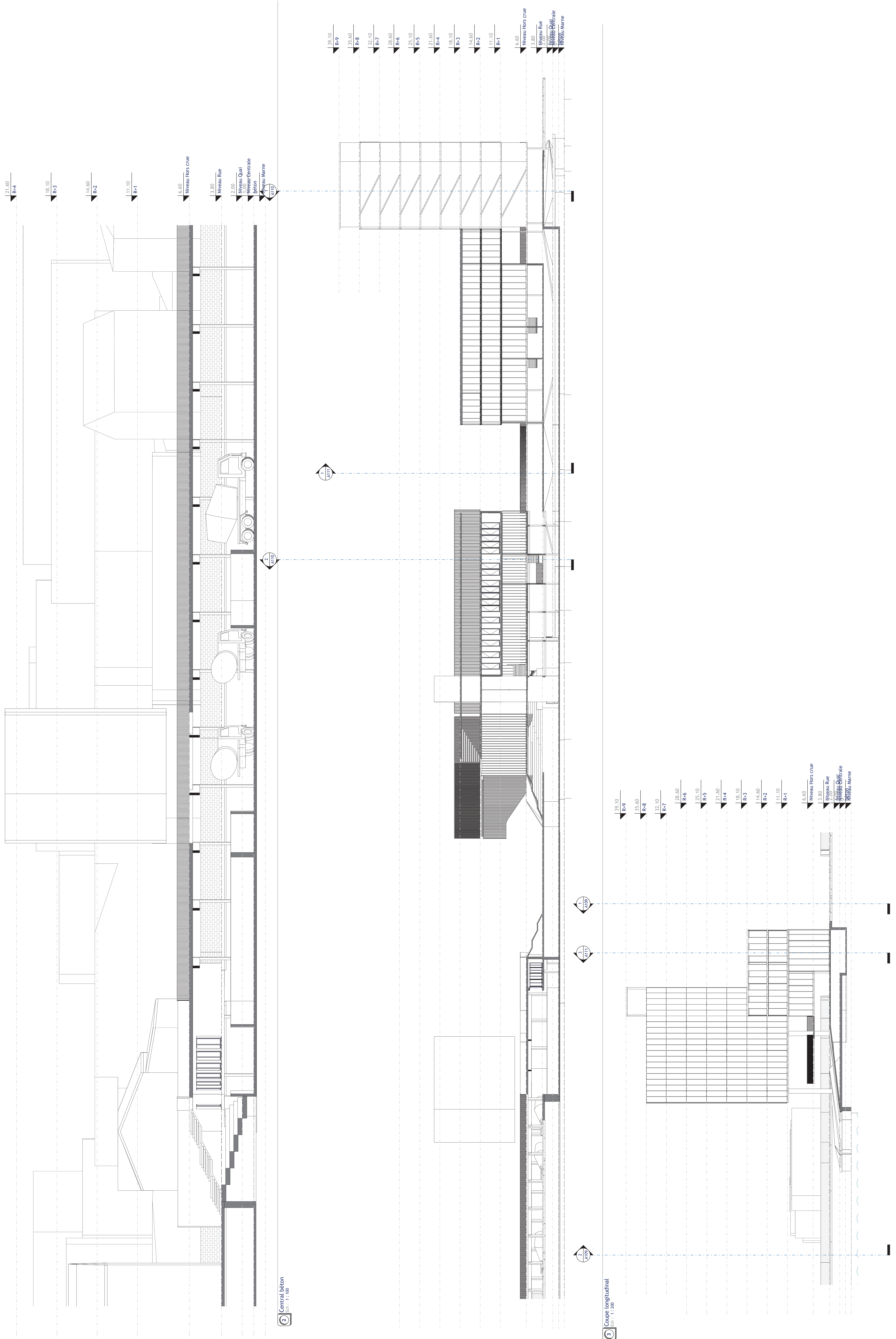


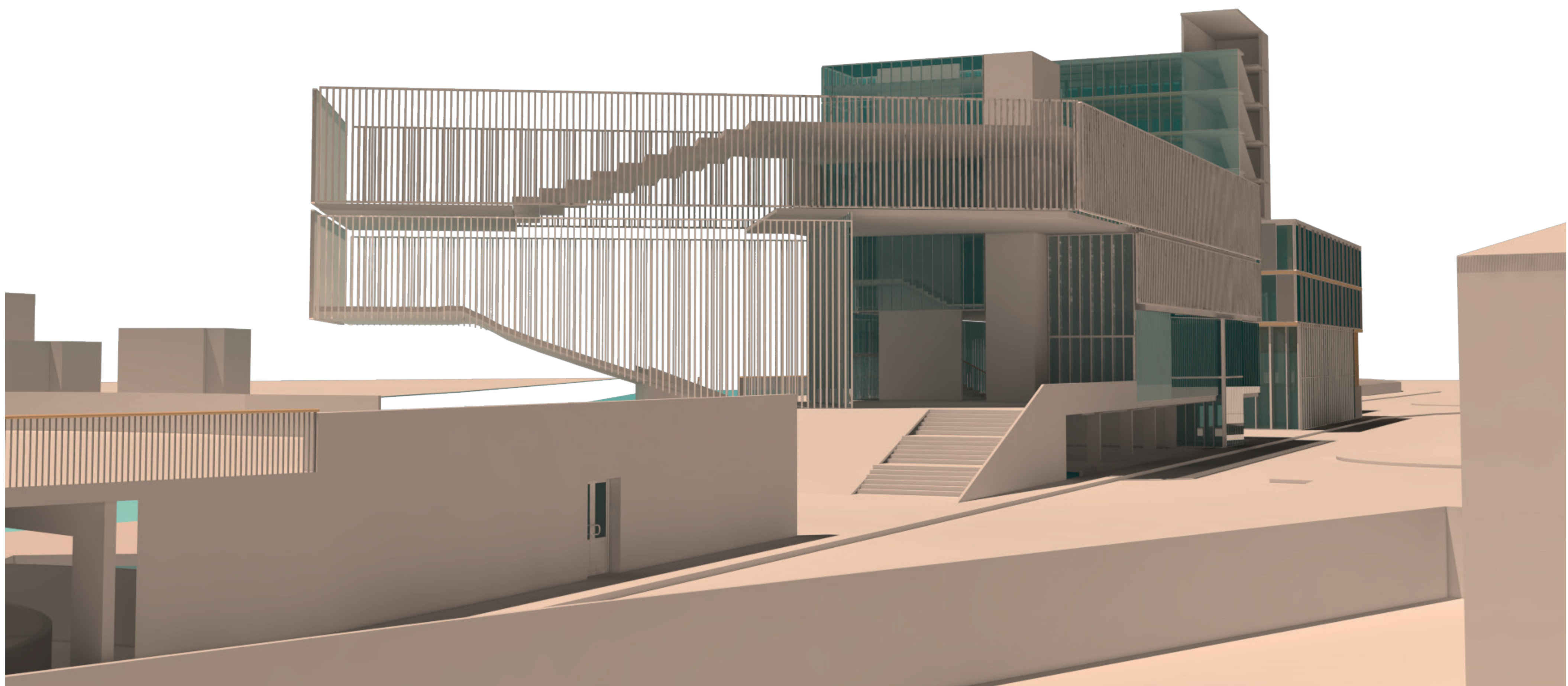
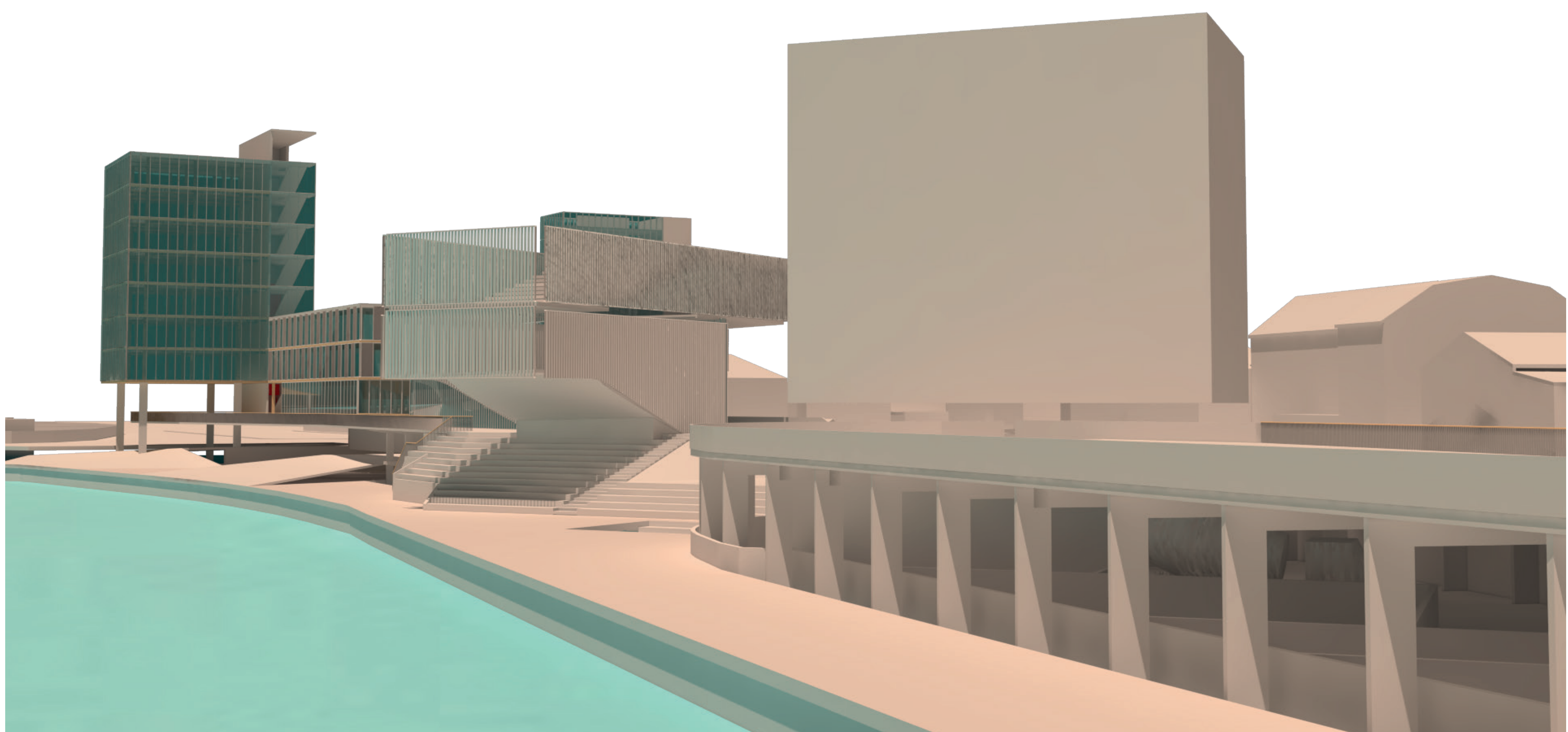
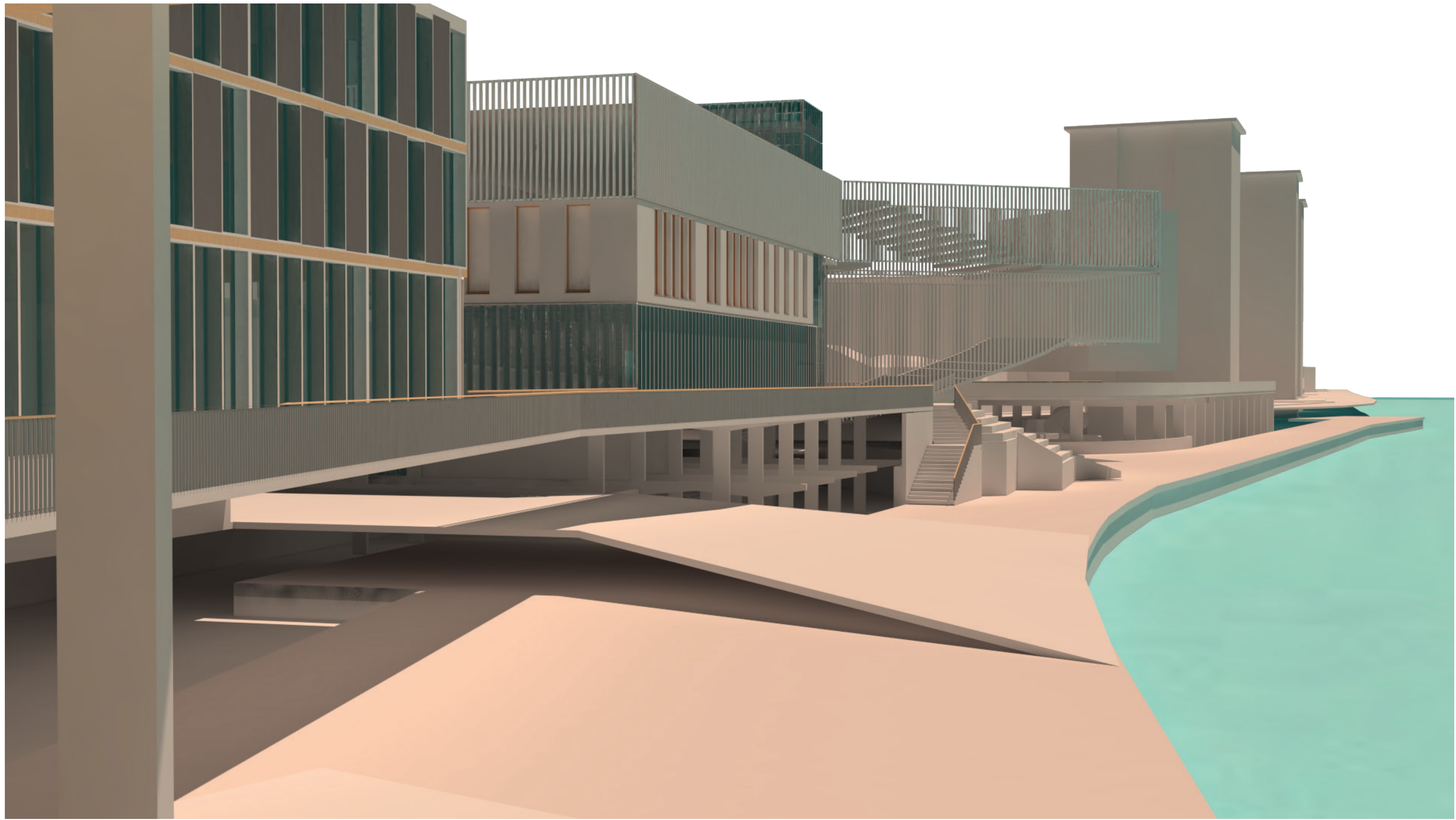
FAÇADE 1.200

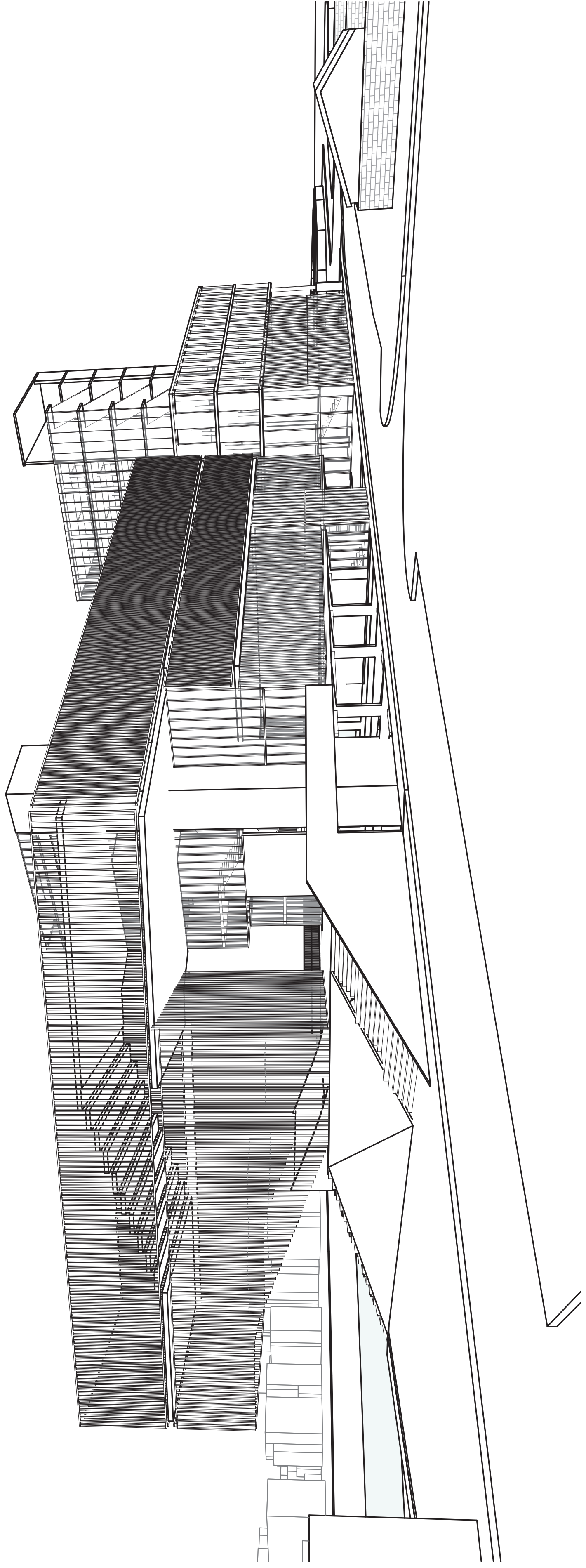




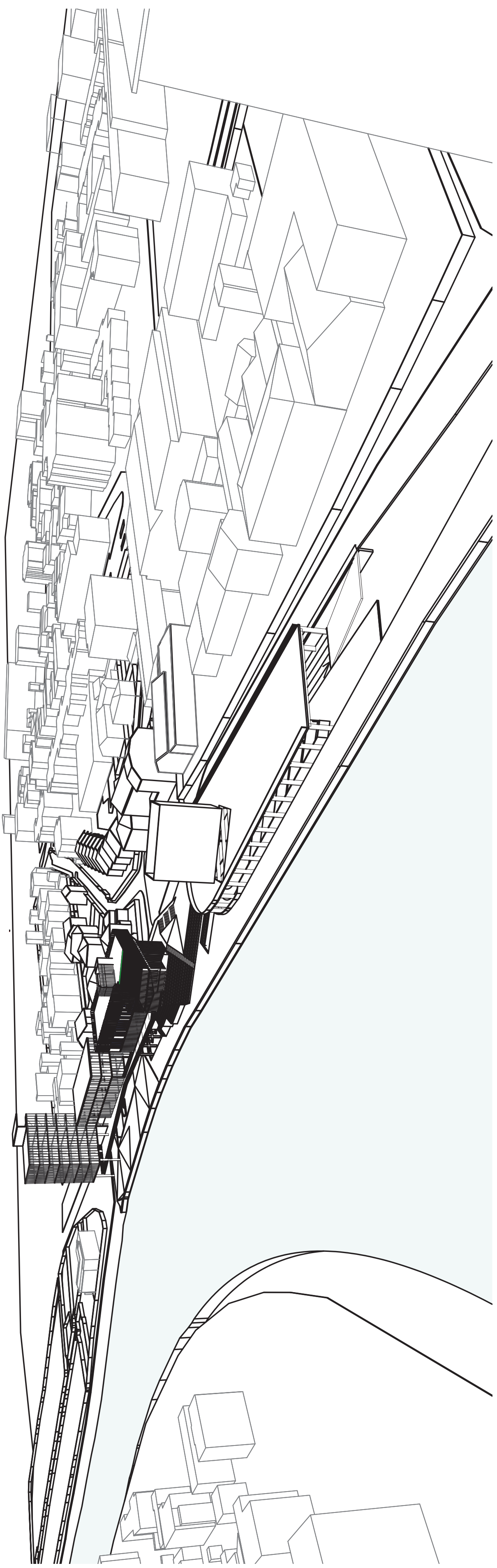
COUPES 1.200



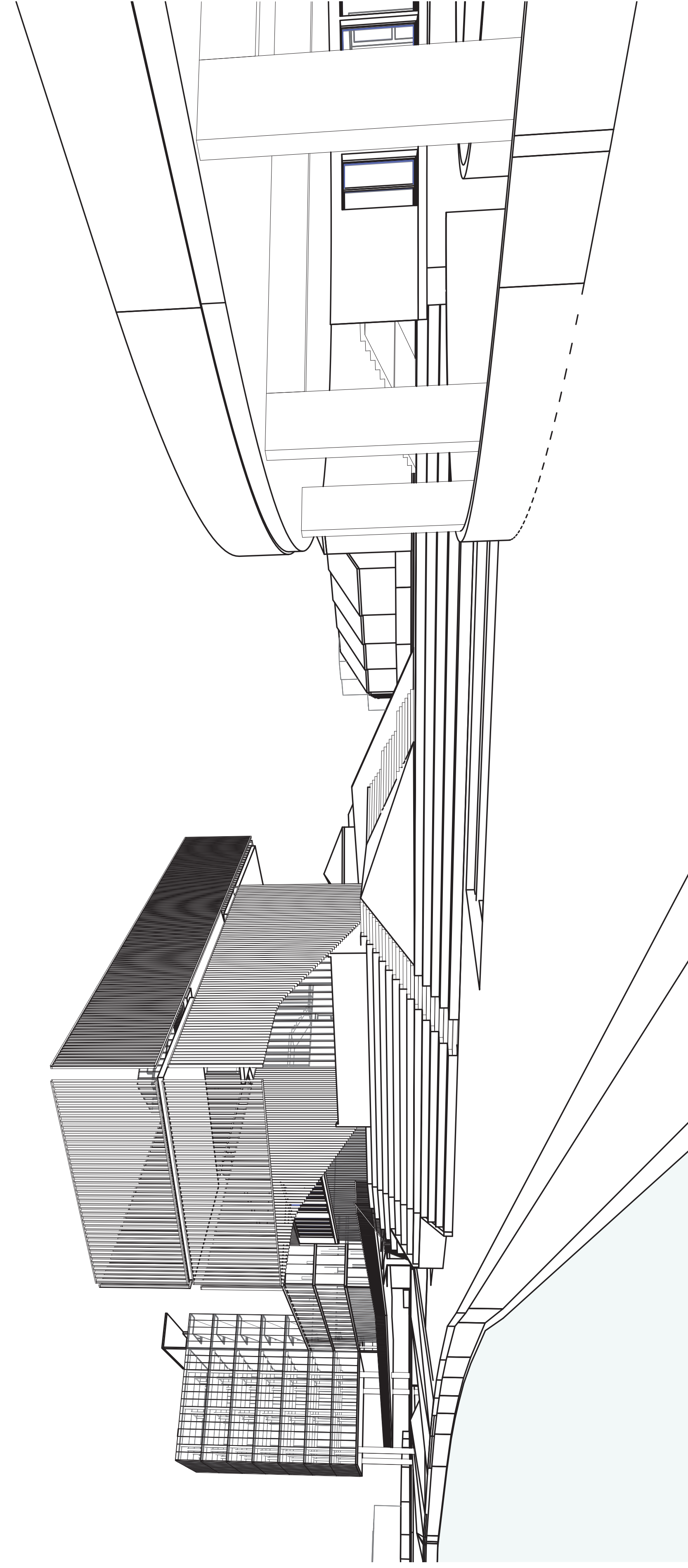




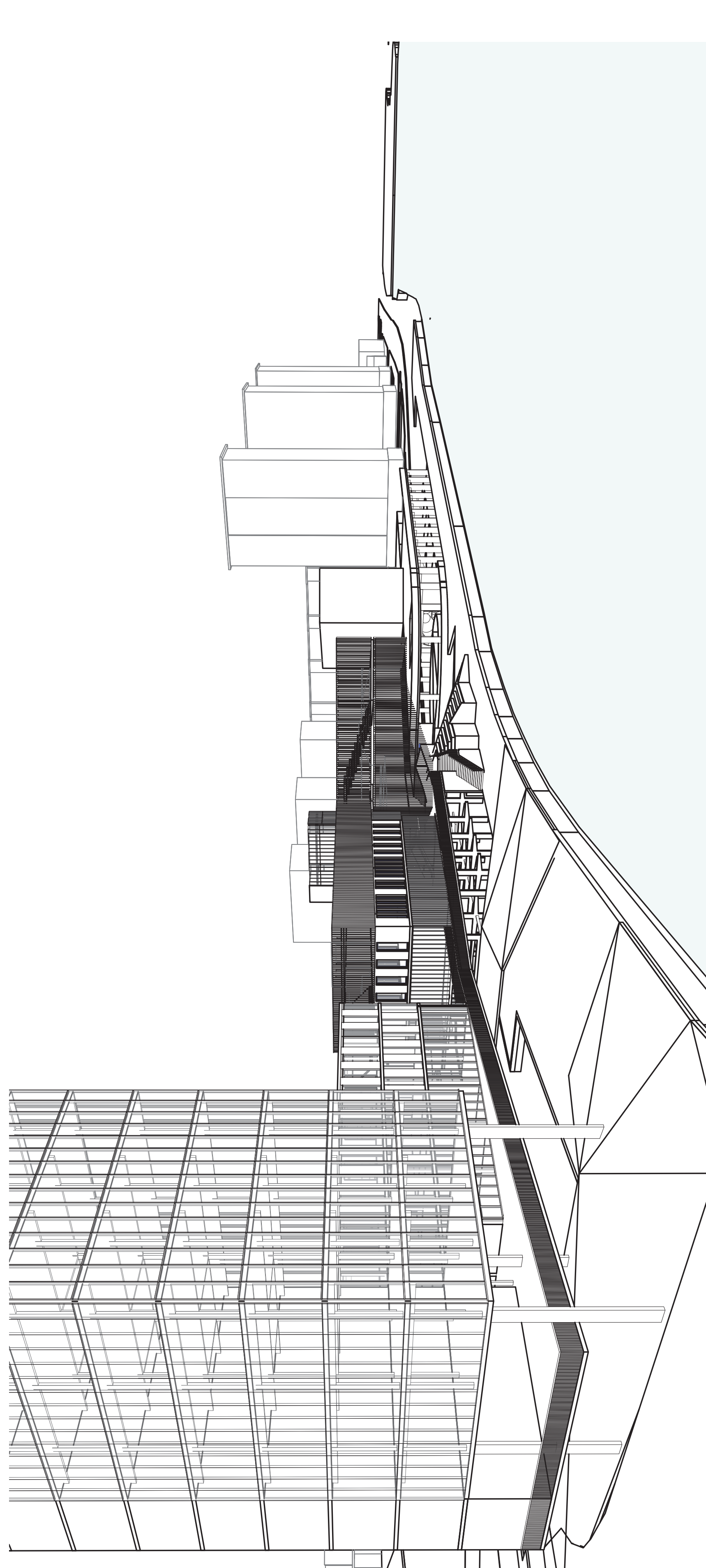
3 Pers 03



2 Pers 02



4 Pers 04



1 Pers 01