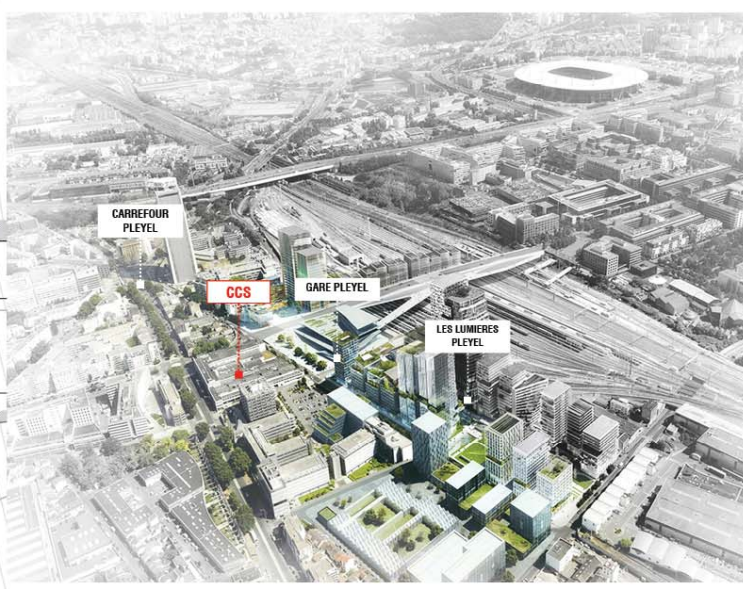
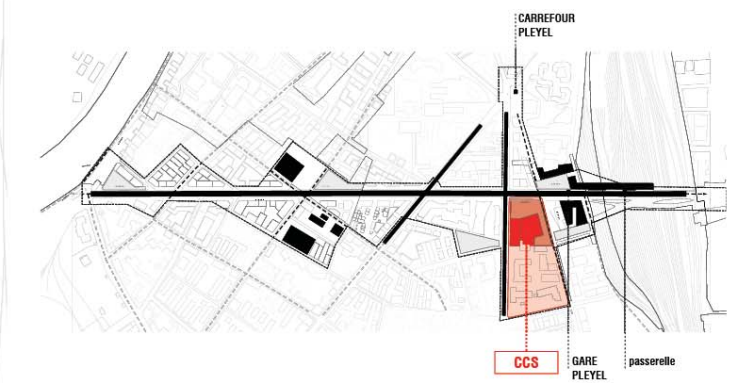
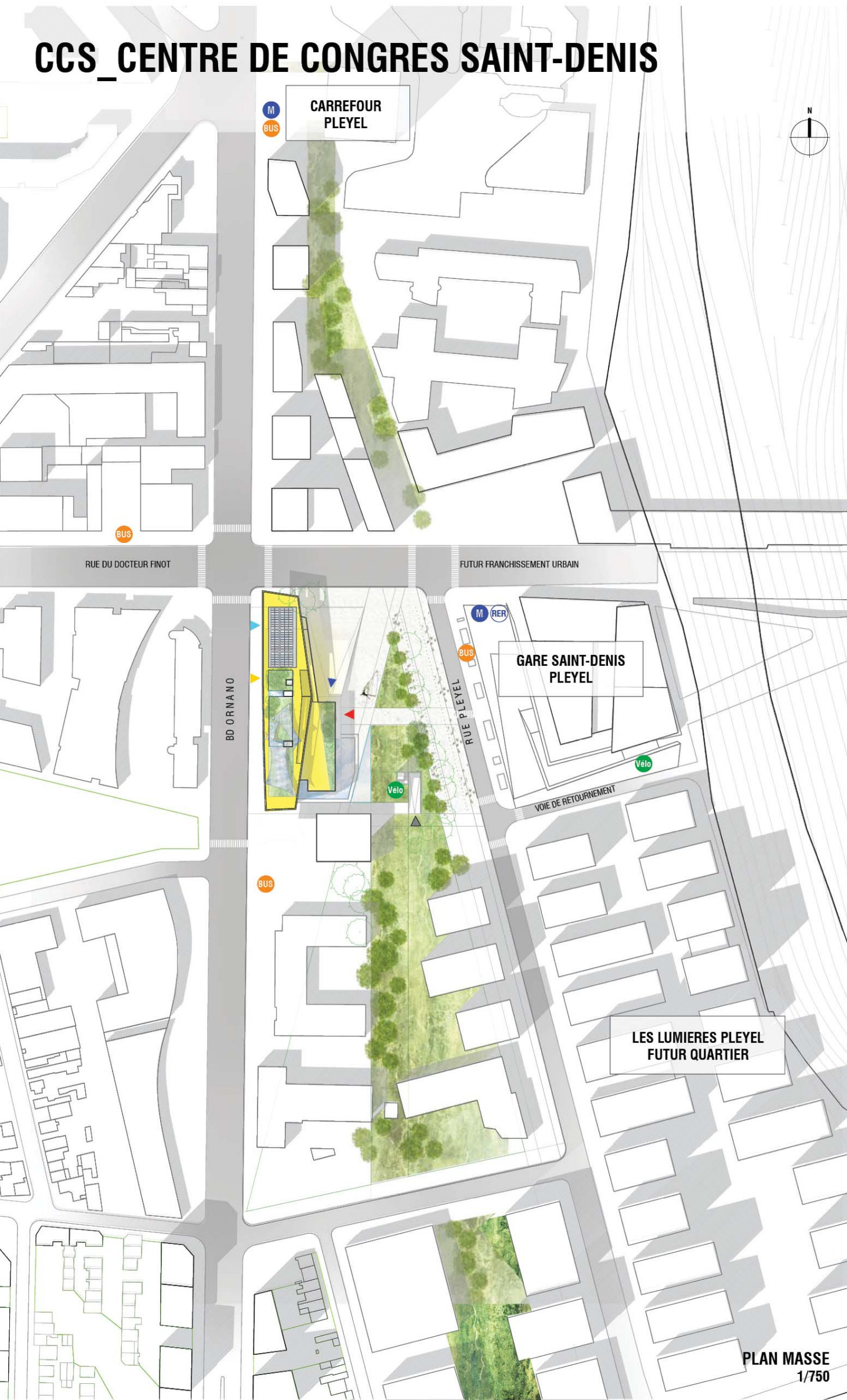


# CCS CENTRE DE CONGRES SAINT-DENIS

ENSAPLV - PFE 2018  
Valentina GARRETON LAZCANO  
Dirigé par: Eric LOCICERO - Nazila BELKADI - Serge WACHTER



**PROGRAMME**

- N3 MEDIATHEQUE  
TERRASSE  
POTAGER
- N2 Salles modulables  
AMPHI 250  
BAR  
SALLE DE FETES  
Services
- N1 Accueil NORD  
Salles modulables  
AMPHI 250  
RESTAURANT
- N00 Accueil EST  
FORUM EXPO  
Vestiaire  
Administration  
Salle Multifonction  
CAFÉ
- S1 AMPHI 500  
FORUM EXPO  
Salles de Projections  
Shop  
Vestiaire  
BAR  
Services  
Parking 80 places
- S2 Services Staff  
Stockage  
Locaux techniques  
Parking 110 places
- S3 Services Amphi 500  
Stockage  
Locaux techniques  
Parking 145 places

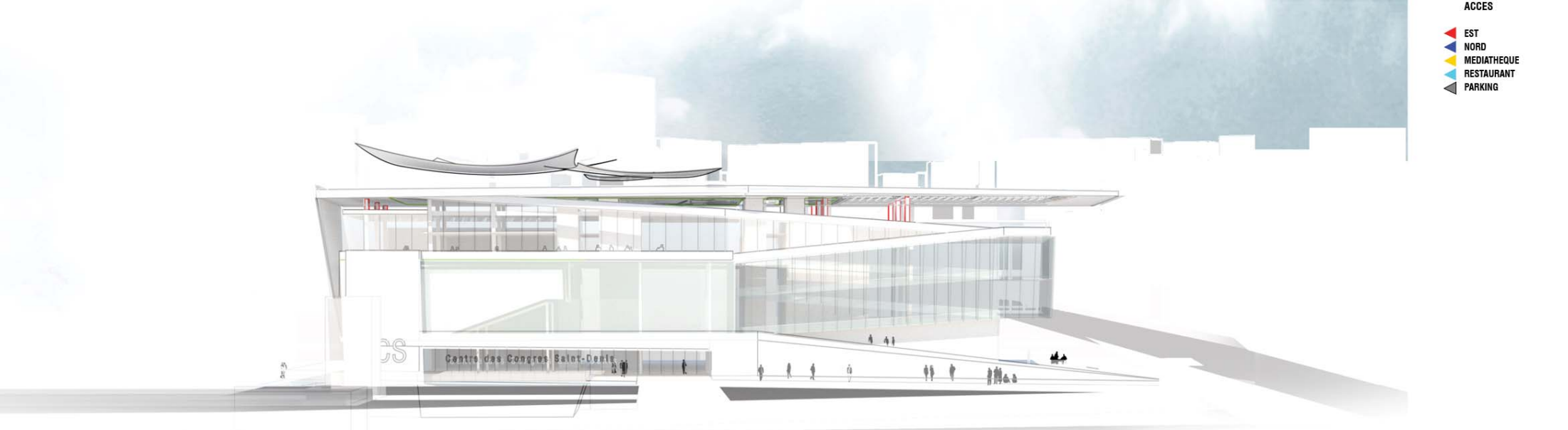
**LEGENDE**

- FORUM/EXPO
- AMPHIS 250/500
- ACCUEIL/BUREAUX
- SHOP
- CO-WORKING/COMMISSIONS
- CAFÉ/RESTAURANT
- POTAGER
- MEDIATHEQUE
- TERRASSE
- PARKING

**ACCES**

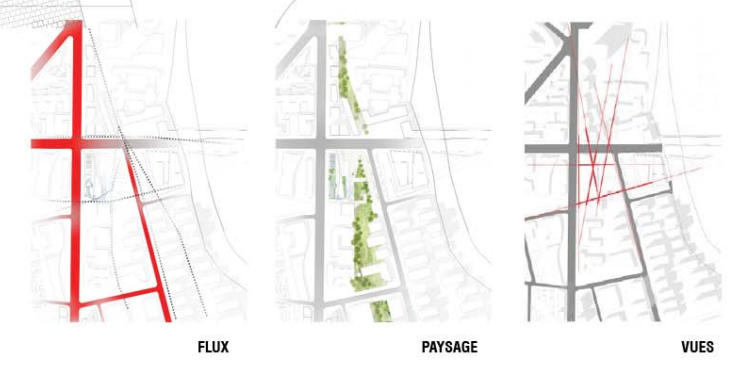
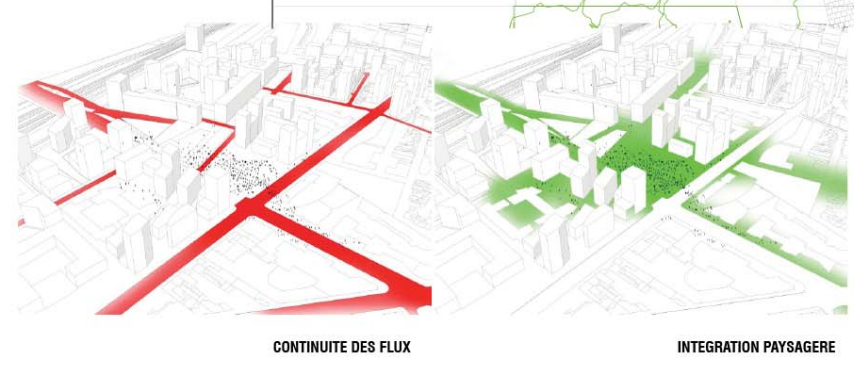
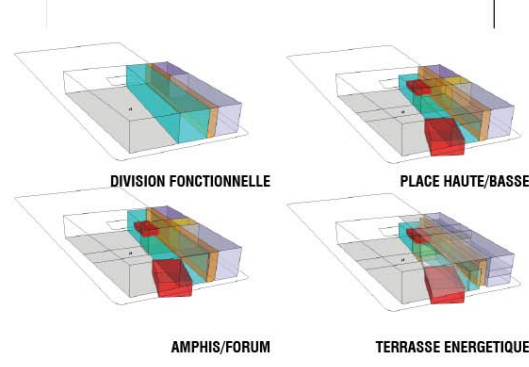
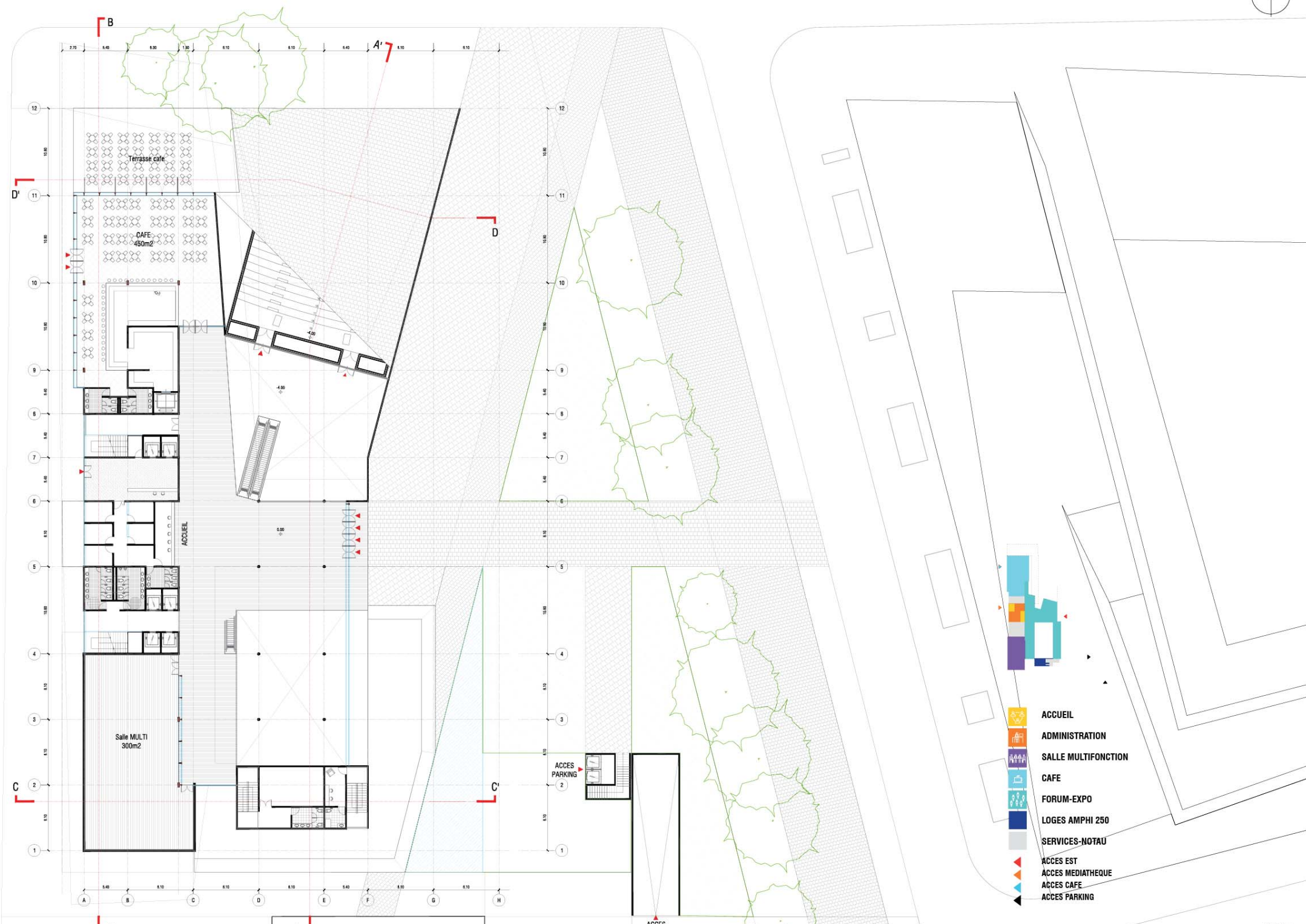
- EST
- NORD
- MEDIATHEQUE
- RESTAURANT
- PARKING

PLAN MASSE  
1/750

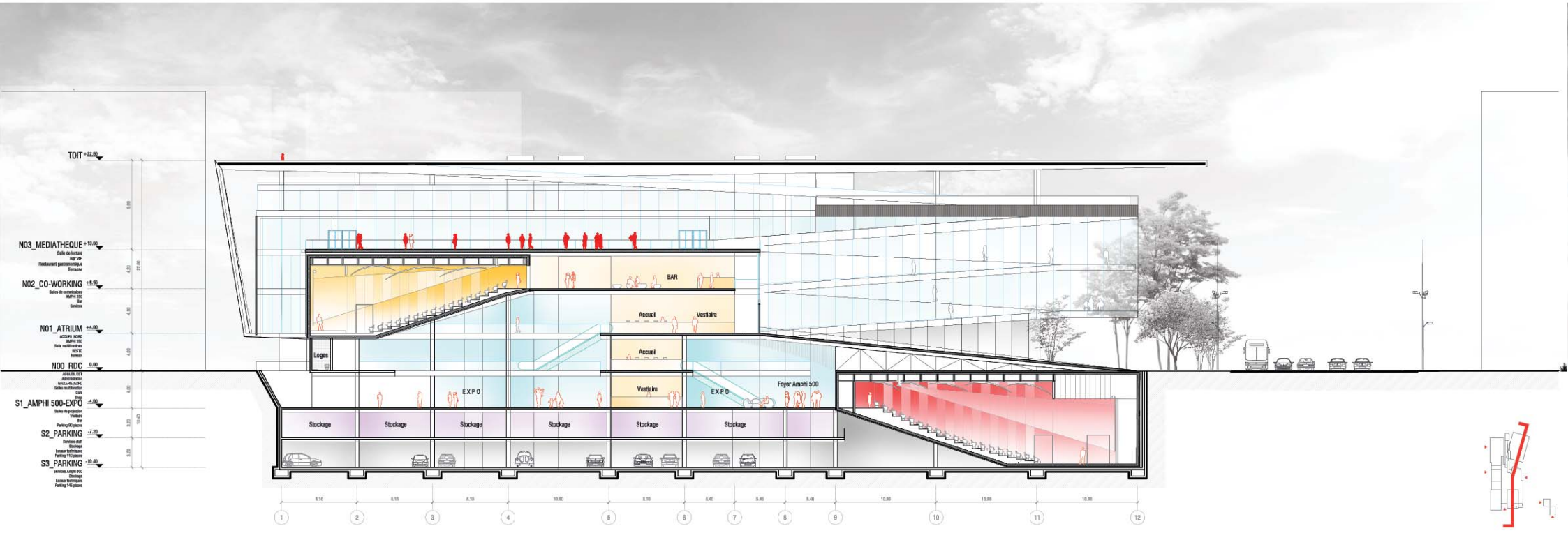


# CCS CENTRE DE CONGRES SAINT-DENIS

ENSAPLV - PFE 2018  
Valentina GARRETON LAZCANO  
Dirigé par: Eric LOCICERO - Nazila BELKADI - Serge WACHTER



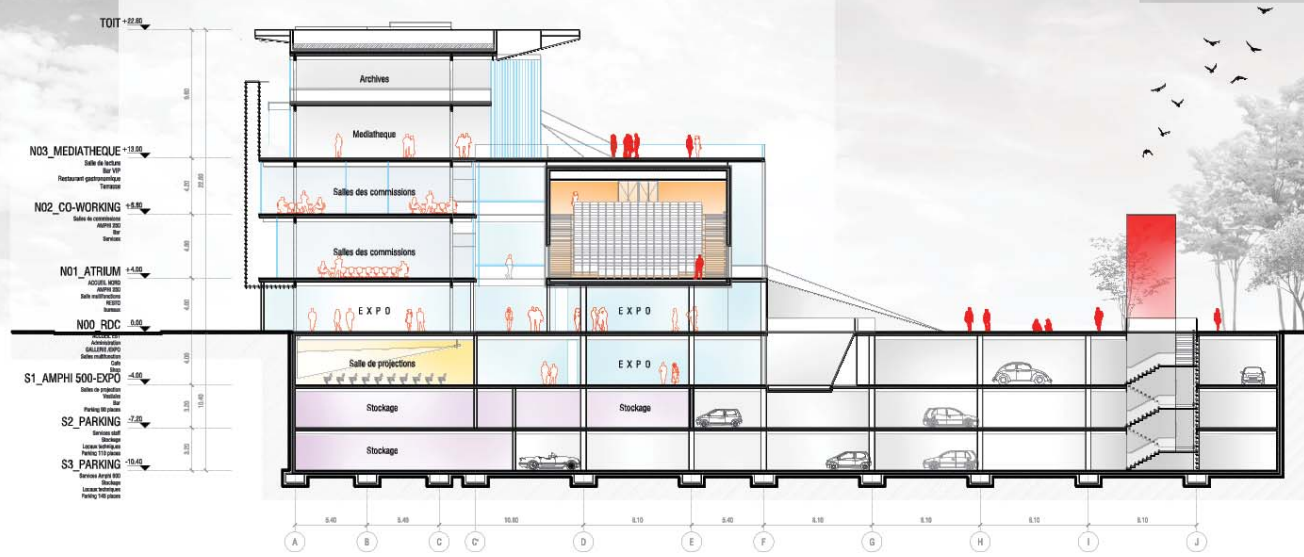
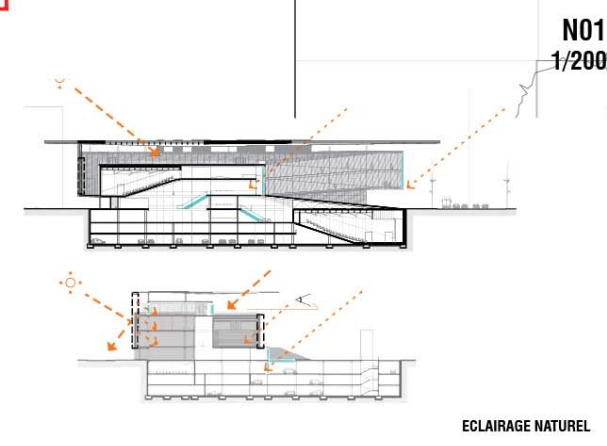
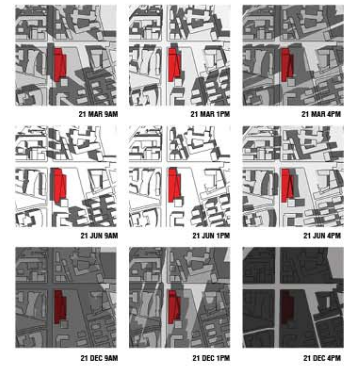
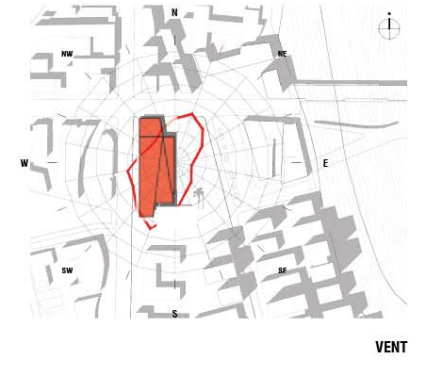
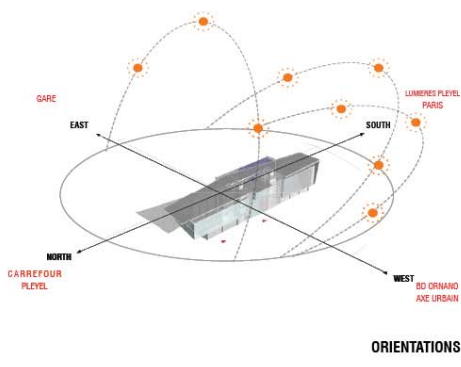
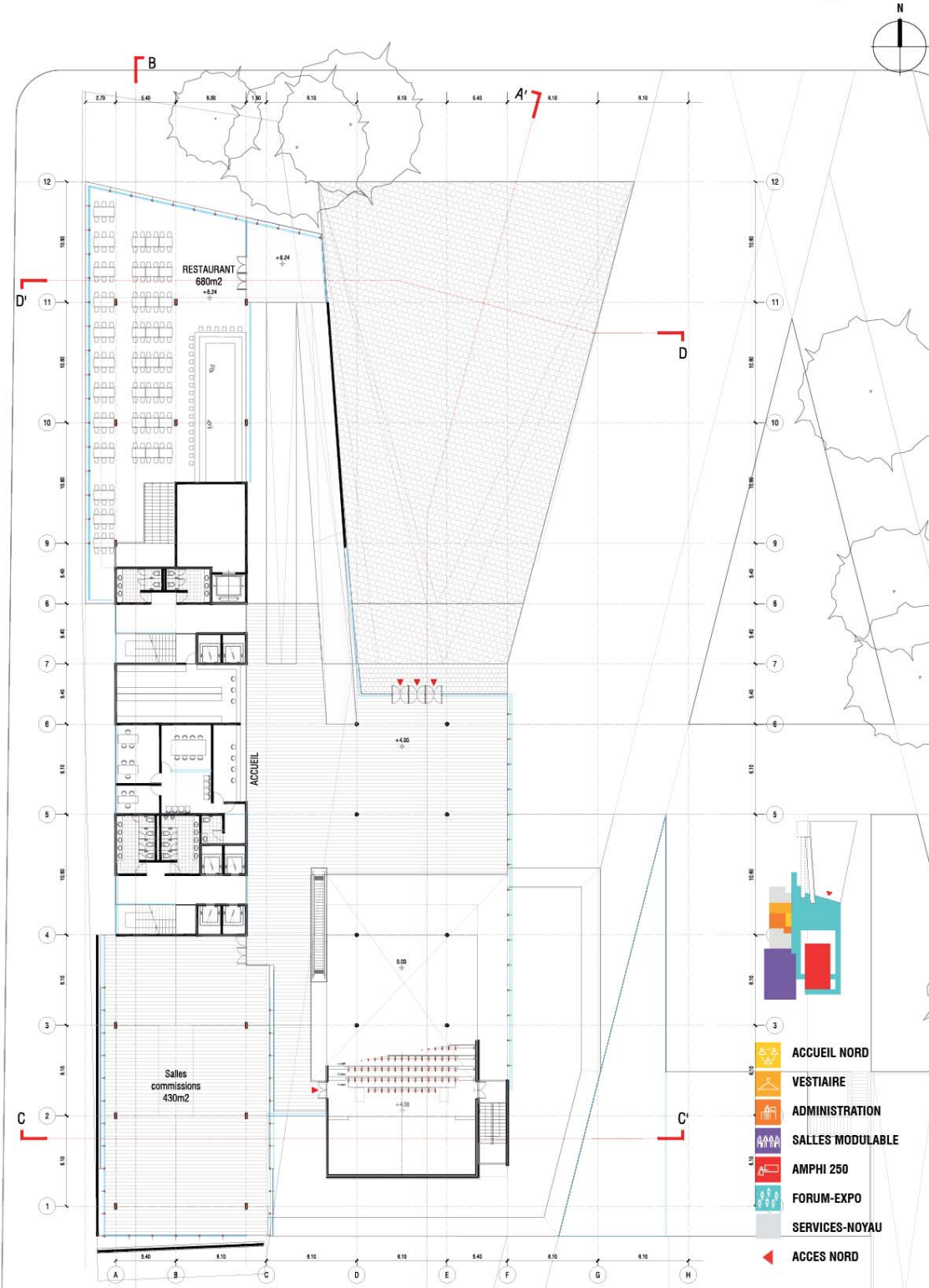
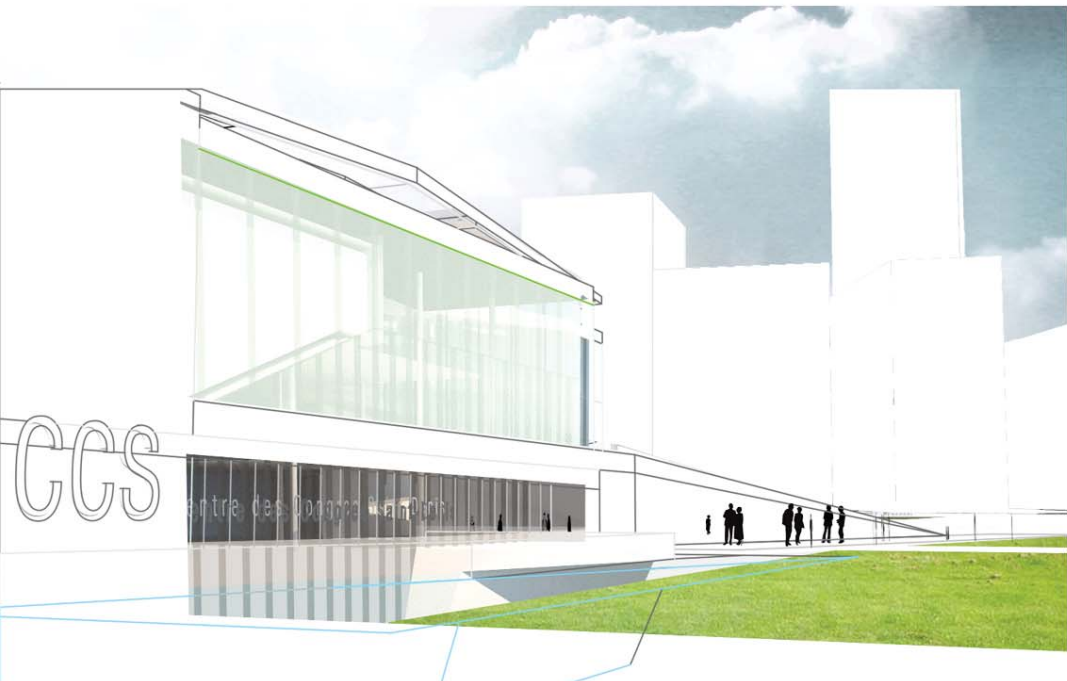
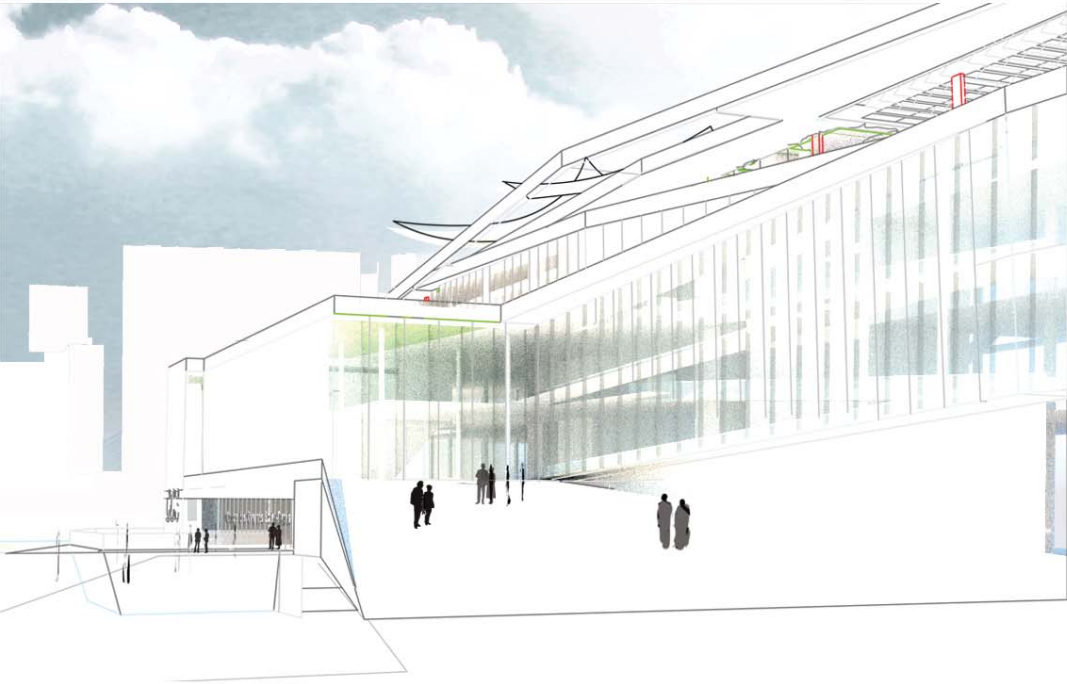
N00  
1/200



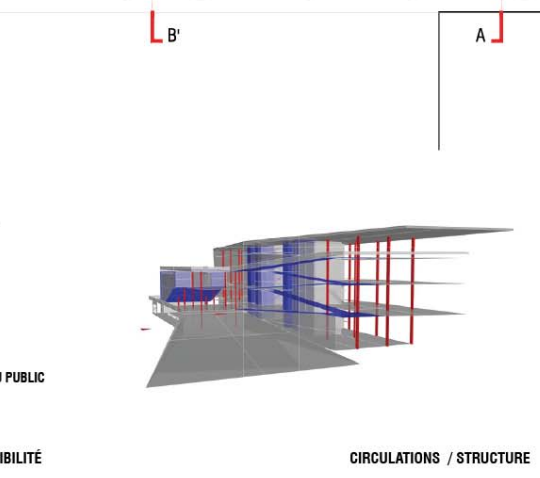
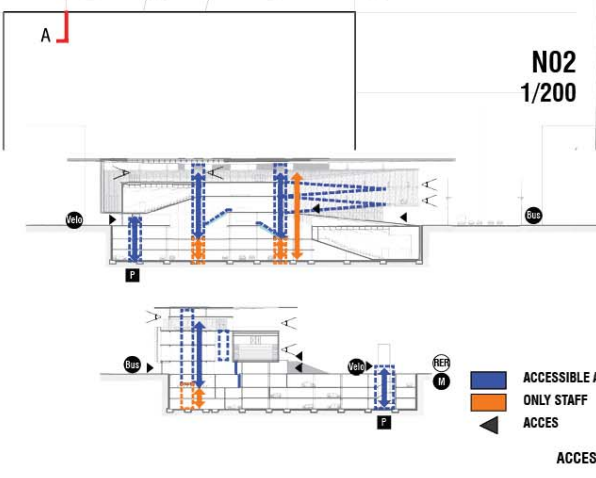
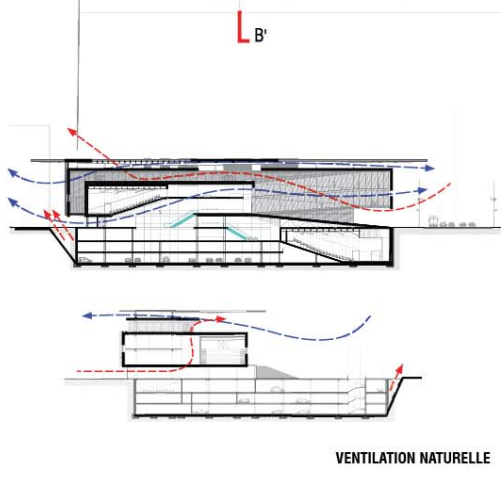
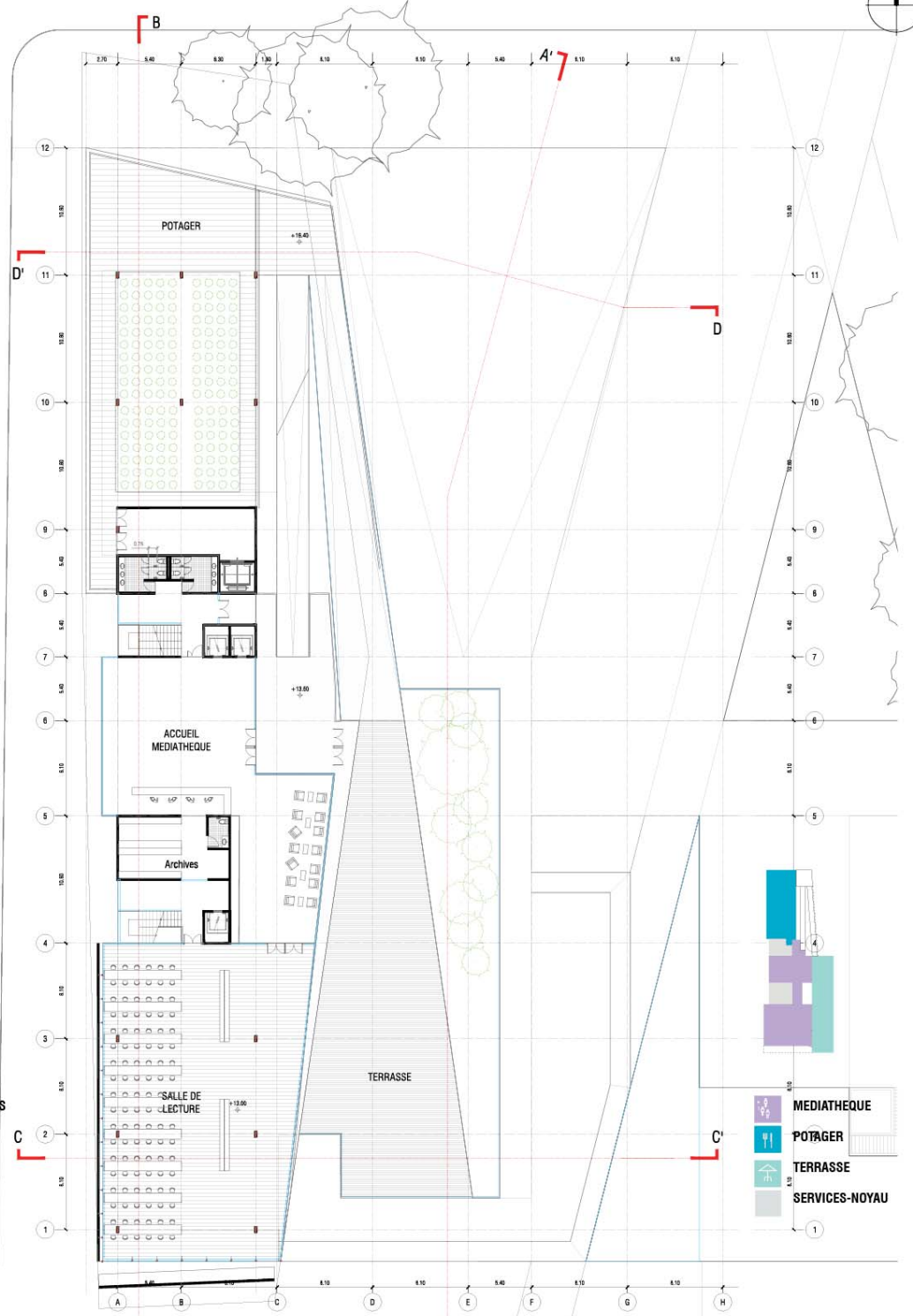
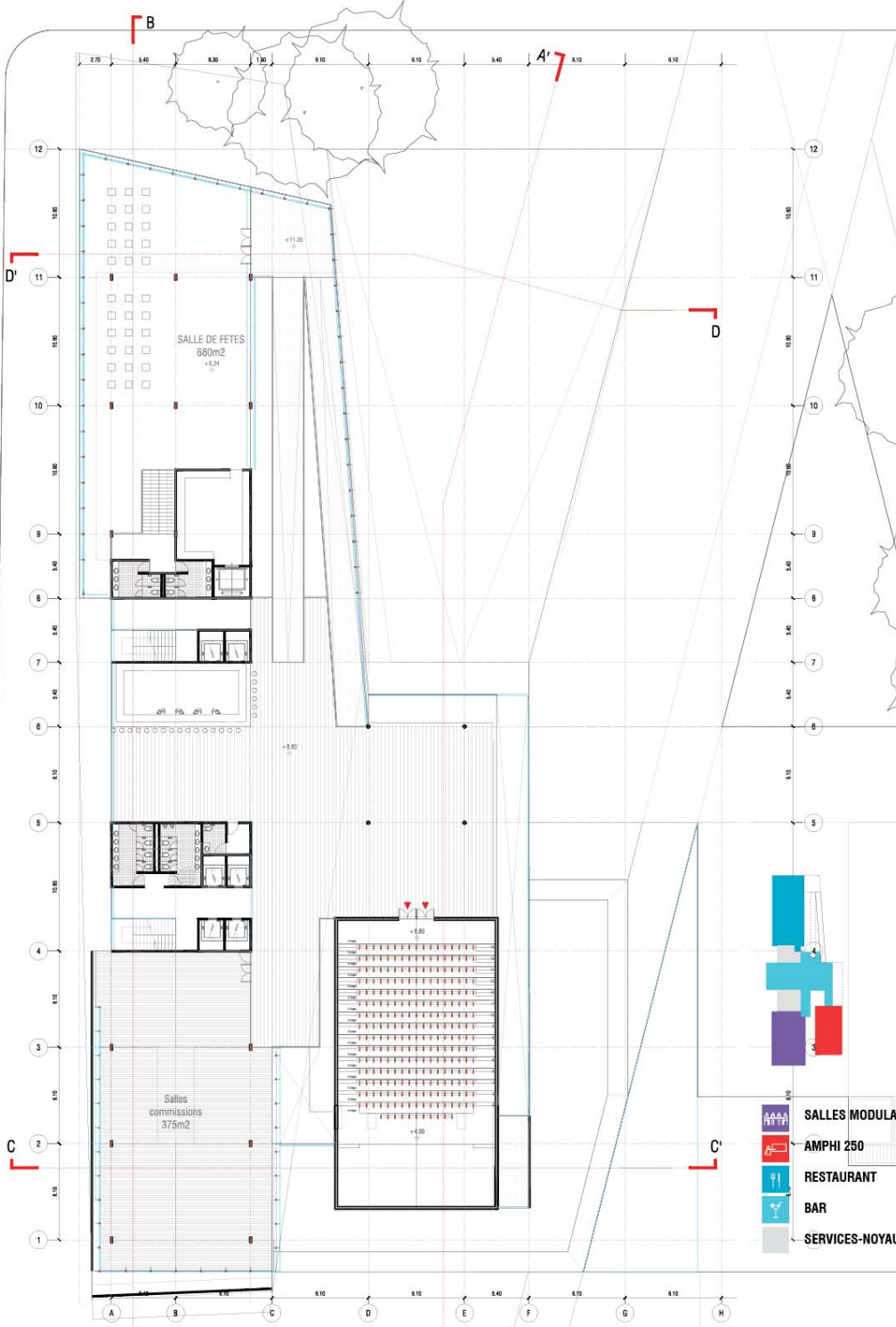
AA'  
1/200

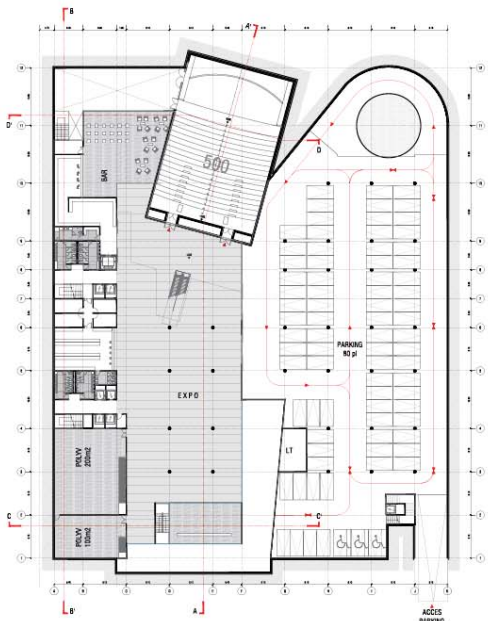
# CCS CENTRE DE CONGRES SAINT-DENIS

ENSAPLV - PFE 2018  
Valentina GARRETTON LAZCANO  
Dirigé par: Eric LOCICERO - Nazila BELKADI - Serge WACHTER



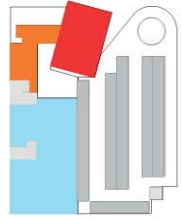
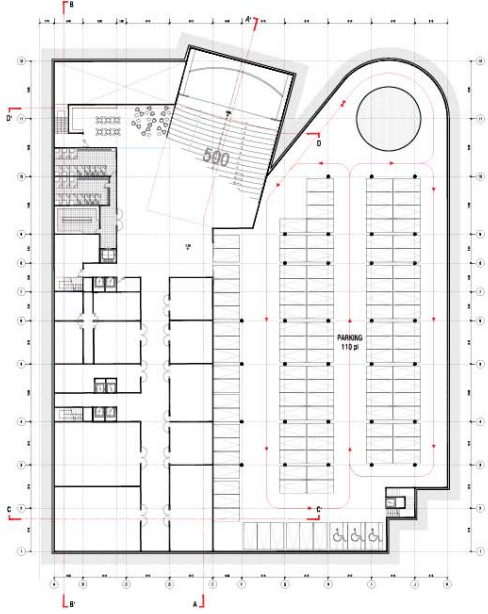
CC'  
1/200





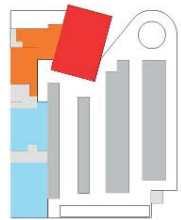
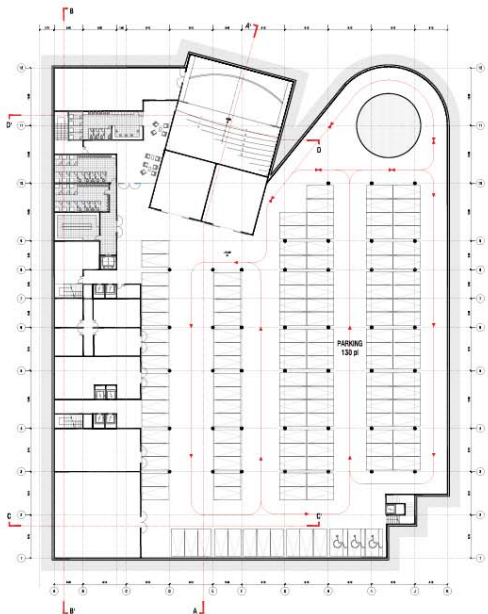
- AMPHI 500
- BUREAUX
- VESTIAIRE
- SALLES PROJECTION
- FORUM-EXPO
- BAR
- SHOP
- SERVICES-NOYAU
- PARKING 80 PLACES

**S1**  
1/500



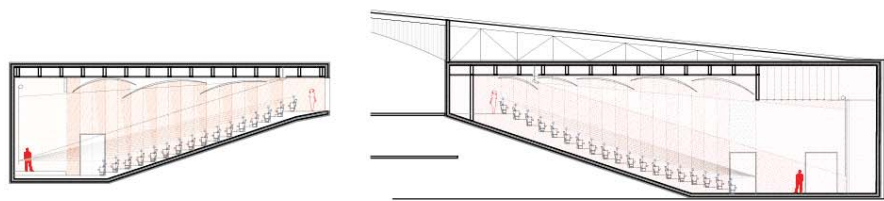
- AMPHI 500
- SERVICES STAFF
- STOCKAGE-LT
- SERVICES-NOYAU
- PARKING 110 PLACES

**S2**  
1/500

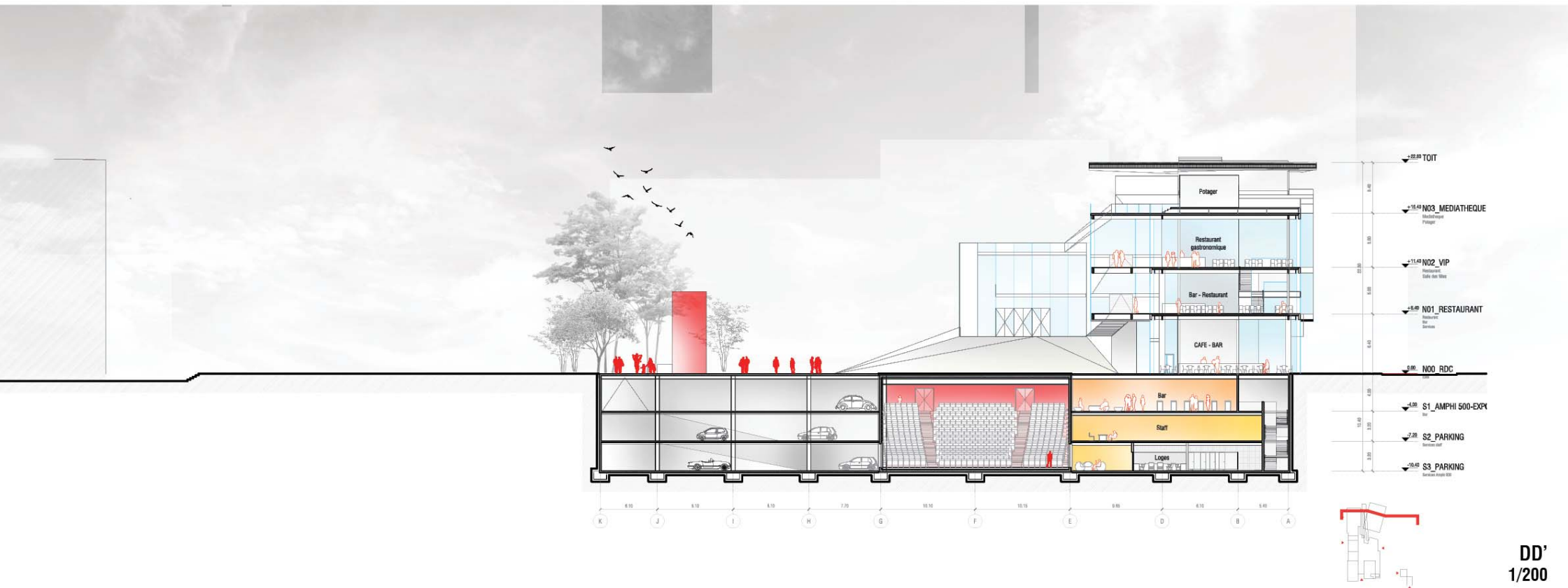


- AMPHI 500
- SERVICES STAFF
- STOCKAGE-LT
- SERVICES-NOYAU
- PARKING 130 PLACES

**S3**  
1/500



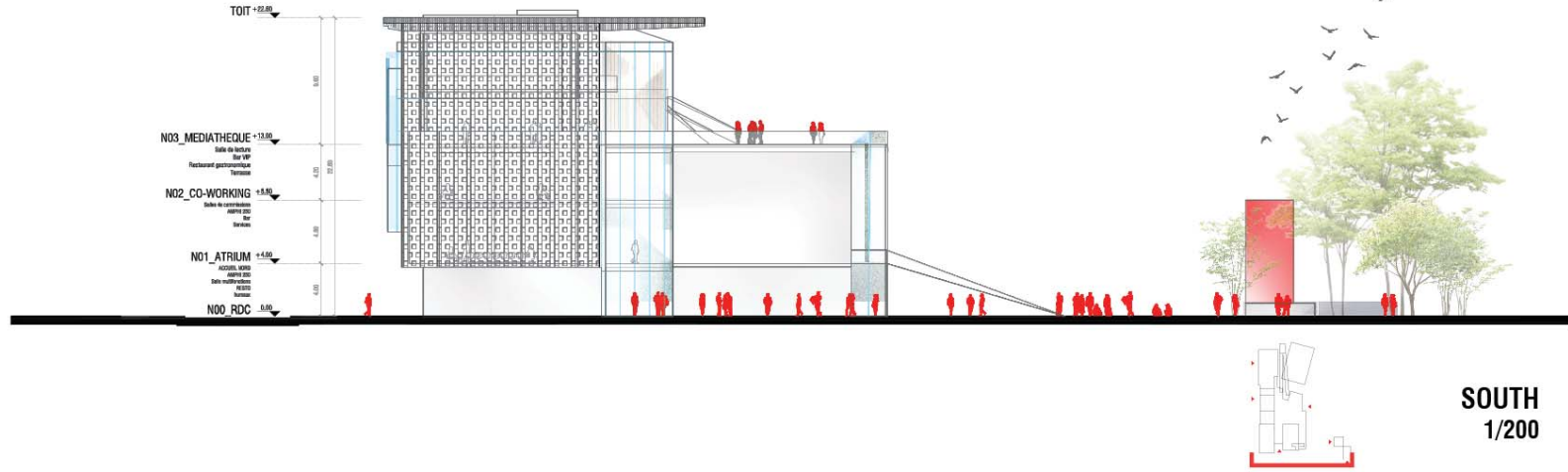
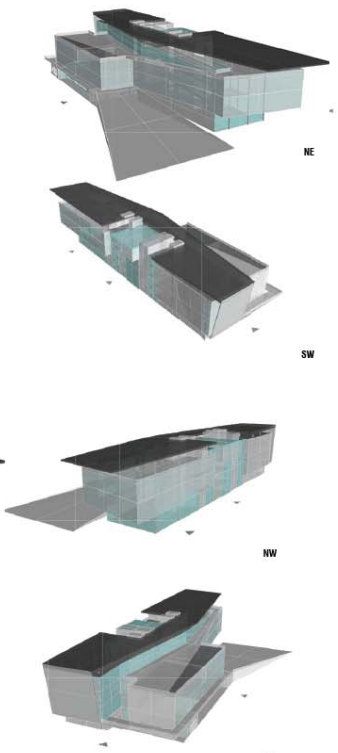
**VISIBILITÉ AMPHIS**



- 22.00 TOIT
- 15.00 N03\_MEDIATHEQUE
- 11.00 N02\_VIP
- 5.00 N01\_RESTAURANT
- 0.00 N00\_RDC
- -1.50 S1\_AMPHI 500-EXPI
- -2.00 S2\_PARKING
- -3.00 S3\_PARKING

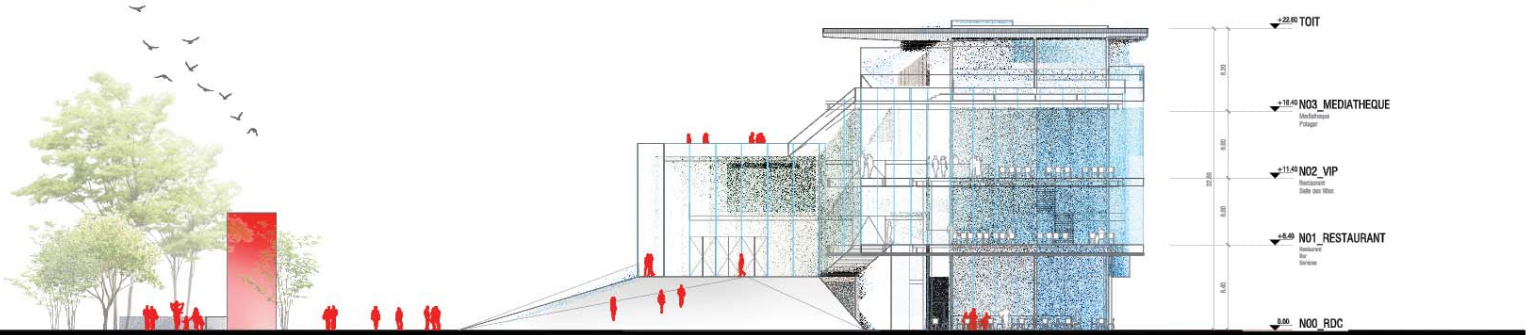
# CCS CENTRE DE CONGRES SAINT-DENIS

ENSAPLV - PFE 2018  
 Valentina GARRETON LAZCANO  
 Dirigé par: Eric LOCICERO - Nazila BELKADI - Serge WACHTER

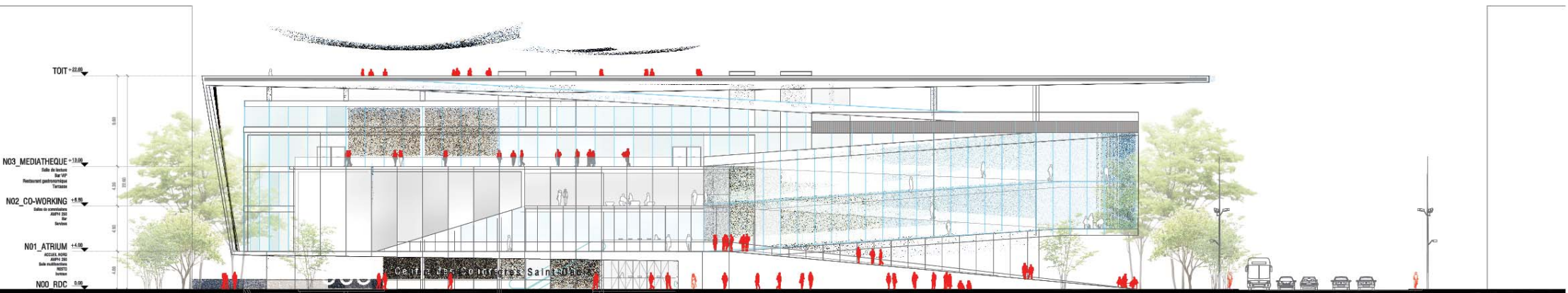


SOUTH  
1/200

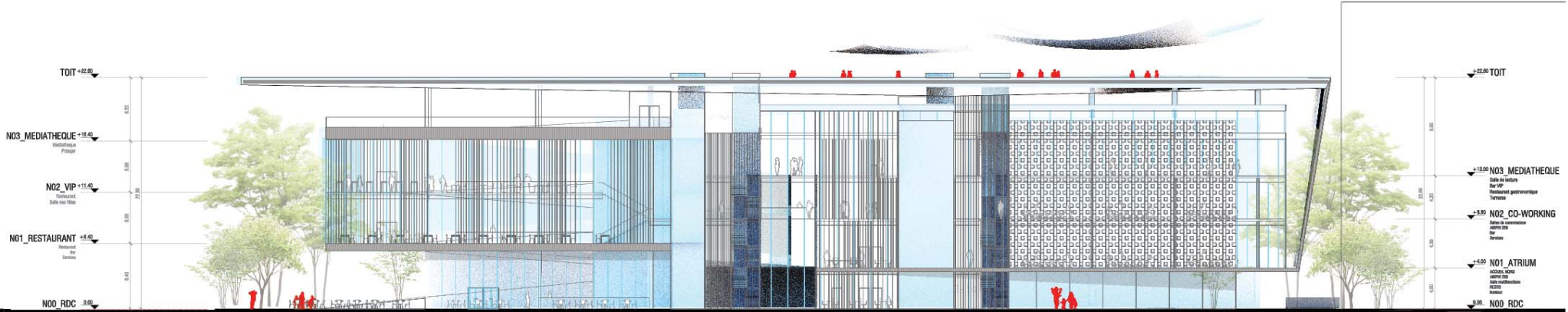
OPAQUE  
 TRANSPARENT  
 ACCES



NORTH  
1/200



EAST  
1/200



WEST  
1/200